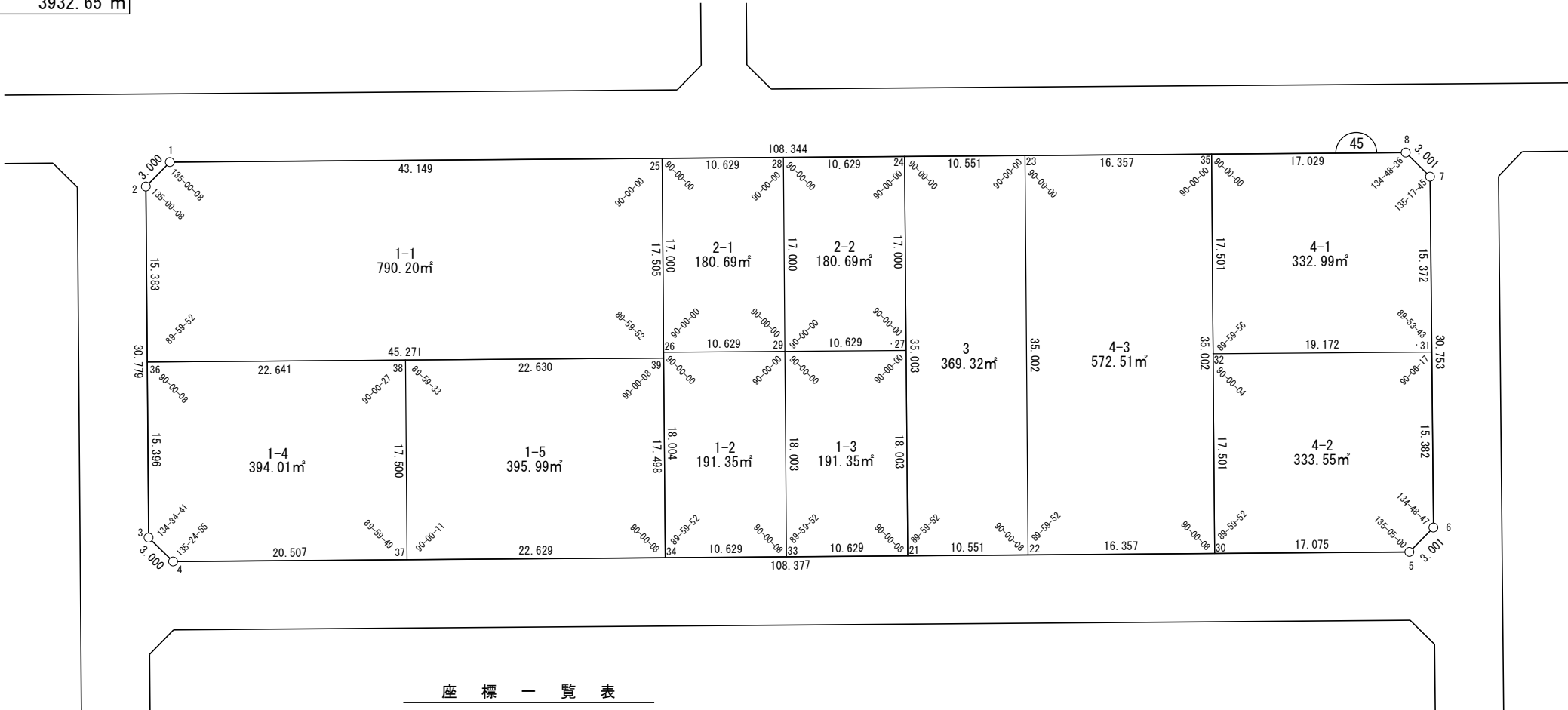
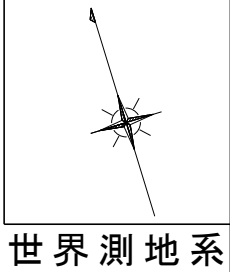


面積一覧表	
地番名	地積
W45-1-1	790.20㎡
W45-1-2	191.35㎡
W45-1-3	191.35㎡
W45-1-4	394.01㎡
W45-1-5	395.99㎡
W45-2-1	180.69㎡
W45-2-2	180.69㎡
W45-3	369.32㎡
W45-4-1	332.99㎡
W45-4-2	333.55㎡
W45-4-3	572.51㎡
合計	3932.65㎡



測点名	X座標	Y座標
W45-1	-97256.429	-2364.299
W45-2	-97257.858	-2366.937
W45-3	-97287.360	-2375.710
W45-4	-97289.987	-2374.262
W45-5	-97320.867	-2270.377
W45-6	-97319.441	-2267.736
W45-7	-97289.947	-2259.027
W45-8	-97287.304	-2260.448
W45-21	-97308.335	-2312.537
W45-22	-97311.341	-2302.423
W45-23	-97277.790	-2292.449
W45-24	-97274.783	-2302.563
W45-25	-97268.725	-2322.939
W45-26	-97285.021	-2327.784

測点名	X座標	Y座標
W45-27	-97291.078	-2307.407
W45-28	-97271.754	-2312.751
W45-29	-97288.049	-2317.595
W45-30	-97316.002	-2286.745
W45-31	-97304.689	-2263.380
W45-32	-97299.226	-2281.758
W45-33	-97305.306	-2322.726
W45-34	-97302.278	-2332.914
W45-35	-97282.451	-2276.770
W45-36	-97272.603	-2371.322
W45-37	-97295.830	-2354.605
W45-38	-97279.055	-2349.620
W45-39	-97285.505	-2327.928

# 面積（座標法）計算書

地番：W45-1-1

測点名	[1] X(i)	[2] X(i+1)-X(i-1)	[3] Y(i)	[4] Y(i+1)-Y(i-1)	[2]*[3]	[1]*[4]	方向角	夾角	距離
W45-1	-97256.429	10.867	-2364.299	-43.998	-25693.817000	4279063.096295	241-33-32	135-00-08	3.000
W45-2	-97257.858	-16.173	-2366.937	-7.022	38281.277137	682975.300882	196-33-40	135-00-08	15.383
W45-36	-97272.603	-27.647	-2371.322	39.009	65560.150084	-3794534.420777	106-33-32	89-59-52	45.271
W45-39	-97285.505	3.877	-2327.928	48.382	-9026.133192	-4706909.342152	16-33-24	89-59-52	17.505
W45-25	-97268.725	29.076	-2322.939	-36.372	-67541.072358	3537824.961081	286-33-24	90-00-00	43.149
合計				倍面積	1580.404670	-1580.404670			124.308
				面積	790.2023350	790.2023350			

面積（座標法）計算書

地番：W45-1-2

測点名	[1] X(i)	[2] X(i+1)-X(i-1)	[3] Y(i)	[4] Y(i+1)-Y(i-1)	[2]*[3]	[1]*[4]	方向角	夾角	距離
W45-26	-97285.021	-14.228	-2327.784	-15.319	33120.716589	1490275.511721	196-33-24	90-00-00	18.004
W45-34	-97302.278	-20.286	-2332.914	5.058	47324.933711	-492142.661583	106-33-16	89-59-52	10.629
W45-33	-97305.306	14.228	-2322.726	15.319	-33048.750961	-1490586.262236	16-33-24	90-00-08	18.003
W45-29	-97288.049	20.286	-2317.595	-5.058	-47014.183195	492070.695955	286-33-24	90-00-00	10.629
合計				倍面積	382.716143	-382.716143			57.265
				面積	191.3580718	191.3580718			

# 面積（座標法）計算書

地番：W45-1-3

測点名	[1] X(i)	[2] X(i+1)-X(i-1)	[3] Y(i)	[4] Y(i+1)-Y(i-1)	[2]*[3]	[1]*[4]	方向角	夾角	距離
W45-29	-97288.049	-14.228	-2317.595	-15.319	32974.806285	1490310.089386	196-33-24	90-00-00	18.003
W45-33	-97305.306	-20.285	-2322.726	5.058	47117.305585	-492169.821198	106-33-16	89-59-52	10.629
W45-21	-97308.335	14.228	-2312.537	15.319	-32902.840995	-1490620.831171	16-33-24	90-00-08	18.003
W45-27	-97291.078	20.285	-2307.407	-5.058	-46806.563801	492097.855907	286-33-24	90-00-00	10.629
合計				倍面積	382.707074	-382.707074			57.264
				面積	191.3535372	191.3535372			

# 面積（座標法）計算書

地番：W45-1-4

測点名	[1] X(i)	[2] X(i+1)-X(i-1)	[3] Y(i)	[4] Y(i+1)-Y(i-1)	[2]*[3]	[1]*[4]	方向角	夾角	距離
W45-36	-97272.603	-8.304	-2371.322	-26.090	19692.345875	2537878.967590	196-33-40	90-00-08	15.396
W45-3	-97287.360	-17.385	-2375.710	-2.940	41300.708451	286046.430863	151-08-21	134-34-41	3.000
W45-4	-97289.987	-8.471	-2374.262	21.105	20111.198933	-2053311.395707	106-33-16	135-24-55	20.507
W45-37	-97295.830	10.932	-2354.605	24.642	-25740.305291	-2397587.826571	16-33-05	89-59-49	17.500
W45-38	-97279.055	23.228	-2349.620	-16.717	-54575.922741	1626185.798598	286-33-32	90-00-27	22.641
合計				倍面積	788.025225	-788.025225			79.044
				面積	394.0126129	394.0126129			

# 面積（座標法）計算書

地番：W45-1-5

測点名	[1] X(i)	[2] X(i+1)-X(i-1)	[3] Y(i)	[4] Y(i+1)-Y(i-1)	[2]*[3]	[1]*[4]	方向角	夾角	距離
W45-38	-97279.055	-10.325	-2349.620	-26.677	24260.297019	2595139.037534	196-33-05	89-59-33	17.500
W45-37	-97295.830	-23.222	-2354.605	16.706	54679.682479	-1625380.162607	106-33-16	90-00-11	22.629
W45-34	-97302.278	10.325	-2332.914	26.677	-24087.808864	-2595758.548811	16-33-24	90-00-08	17.498
W45-39	-97285.505	23.222	-2327.928	-16.706	-54060.171202	1625207.674453	286-33-32	90-00-08	22.630
合計				倍面積	791.999431	-791.999431			80.257
				面積	395.9997159	395.9997159			

面積（座標法）計算書

地番：W45-2-1

測点名	[1] X(i)	[2] X(i+1)-X(i-1)	[3] Y(i)	[4] Y(i+1)-Y(i-1)	[2]*[3]	[1]*[4]	方向角	夾角	距離
W45-28	-97271.754	19.324	-2312.751	-5.344	-44691.625152	519800.197717	286-33-24	90-00-00	10.629
W45-25	-97268.725	-13.266	-2322.939	-15.033	30816.754132	1462203.009657	196-33-24	90-00-00	17.000
W45-26	-97285.021	-19.324	-2327.784	5.344	44982.115504	-519871.089963	106-33-24	90-00-00	10.629
W45-29	-97288.049	13.266	-2317.595	15.033	-30745.861886	-1462493.500009	16-33-24	90-00-00	17.000
合計				倍面積	361.382598	-361.382598			55.258
				面積	180.6912991	180.6912991			

# 面積（座標法）計算書

地番：W45-2-2

測点名	[1] X(i)	[2] X(i+1)-X(i-1)	[3] Y(i)	[4] Y(i+1)-Y(i-1)	[2]*[3]	[1]*[4]	方向角	夾角	距離
W45-29	-97288.049	-19.324	-2317.595	5.344	44785.238796	-519887.285332	106-33-24	90-00-00	10.629
W45-27	-97291.078	13.266	-2307.407	15.033	-30610.702137	-1462539.041522	16-33-24	90-00-00	17.000
W45-24	-97274.783	19.324	-2302.563	-5.344	-44494.748441	519816.393085	286-33-24	90-00-00	10.629
W45-28	-97271.754	-13.266	-2312.751	-15.033	30681.594384	1462248.551166	196-33-24	90-00-00	17.000
合計				倍面積	361.382602	-361.382602			55.258
				面積	180.6913012	180.6913012			



# 面積（座標法）計算書

地番：W45-3

測点名	[1] X(i)	[2] X(i+1)-X(i-1)	[3] Y(i)	[4] Y(i+1)-Y(i-1)	[2]*[3]	[1]*[4]	方向角	夾角	距離
W45-23	-97277.790	36.558	-2292.449	-0.139	-83807.378142	13566.243859	286-33-24	90-00-00	10.551
W45-24	-97274.783	-30.545	-2302.563	-20.089	70331.396967	1954111.369359	196-33-24	90-00-00	35.003
W45-21	-97308.335	-36.558	-2312.537	0.139	84541.776396	-13570.503604	106-33-16	89-59-52	10.551
W45-22	-97311.341	30.545	-2302.423	20.089	-70327.137221	-1954845.767614	16-33-24	90-00-08	35.002
合計				倍面積	738.658000	-738.658000			91.107
				面積	369.3290002	369.3290002			

# 面積（座標法）計算書

地番：W45-4-1

測点名	[1] X(i)	[2] X(i+1)-X(i-1)	[3] Y(i)	[4] Y(i+1)-Y(i-1)	[2]*[3]	[1]*[4]	方向角	夾角	距離
W45-35	-97282.451	-11.923	-2276.770	-21.310	27145.316057	2073063.563265	196-33-24	90-00-00	17.501
W45-32	-97299.226	-22.238	-2281.758	13.390	50742.335273	-1302836.671606	106-33-20	89-59-56	19.172
W45-31	-97304.689	9.279	-2263.380	22.730	-21002.637181	-2211763.942691	16-27-03	89-53-43	15.372
W45-7	-97289.947	17.386	-2259.027	2.933	-39274.771666	-285310.912804	331-44-48	135-17-45	3.001
W45-8	-97287.304	7.496	-2260.448	-17.743	-16944.256178	1726181.977532	286-33-24	134-48-36	17.029
合計				倍面積	665.986303	-665.986303			72.075
				面積	332.9931520	332.9931520			

# 面積（座標法）計算書

地番：W45-4-2

測点名	[1] X(i)	[2] X(i+1)-X(i-1)	[3] Y(i)	[4] Y(i+1)-Y(i-1)	[2]*[3]	[1]*[4]	方向角	夾角	距離
W45-30	-97316.002	-21.641	-2286.745	11.380	49486.301958	-1107489.760245	106-33-16	89-59-52	17.075
W45-5	-97320.867	-3.440	-2270.377	19.008	7809.099585	-1849908.126044	61-38-16	135-05-00	3.001
W45-6	-97319.441	16.178	-2267.736	6.997	-36686.372153	-680925.503123	16-27-03	134-48-47	15.382
W45-31	-97304.689	20.215	-2263.380	-14.021	-45753.910462	1364327.118350	286-33-20	90-06-17	19.172
W45-32	-97299.226	-11.312	-2281.758	-23.364	25811.981871	2273329.170262	196-33-24	90-00-04	17.501
合計				倍面積	667.100799	-667.100799			72.131
				面積	333.5503999	333.5503999			

# 面積（座標法）計算書

地番：W45-4-3

測点名	[1] X(i)	[2] X(i+1)-X(i-1)	[3] Y(i)	[4] Y(i+1)-Y(i-1)	[2]*[3]	[1]*[4]	方向角	夾角	距離
W45-23	-97277.790	-28.890	-2292.449	-25.653	66229.230040	2495456.133157	196-33-24	90-00-00	35.002
W45-22	-97311.341	-38.212	-2302.423	5.704	87979.383856	-555071.937930	106-33-16	89-59-52	16.357
W45-30	-97316.002	28.890	-2286.745	25.653	-66064.438140	-2496436.372154	16-33-24	90-00-08	35.002
W45-35	-97282.451	38.212	-2276.770	-5.704	-86999.144858	554907.146030	286-33-24	90-00-00	16.357
合計				倍面積	1145.030897	-1145.030897			102.718
				面積	572.5154490	572.5154490			