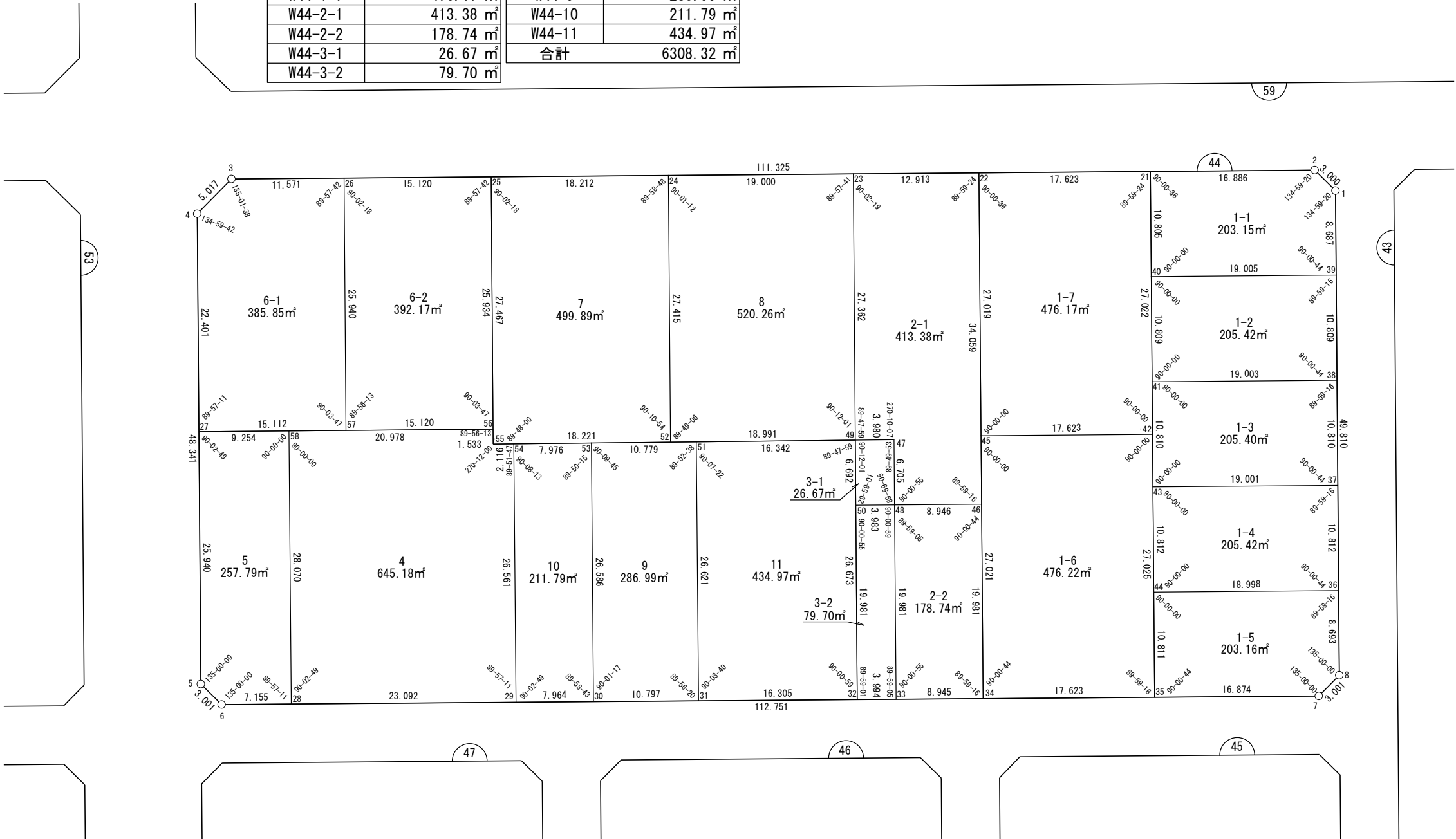


面積一覧表

地番名	地積	地番名	地積
W44-1-1	203.15㎡	W44-4	645.18㎡
W44-1-2	205.42㎡	W44-5	257.79㎡
W44-1-3	205.40㎡	W44-6-1	385.85㎡
W44-1-4	205.42㎡	W44-6-2	392.17㎡
W44-1-5	203.16㎡	W44-7	499.89㎡
W44-1-6	476.22㎡	W44-8	520.26㎡
W44-1-7	476.17㎡	W44-9	286.99㎡
W44-2-1	413.38㎡	W44-10	211.79㎡
W44-2-2	178.74㎡	W44-11	434.97㎡
W44-3-1	26.67㎡	合計	6308.32㎡
W44-3-2	79.70㎡		



世界測地系



座 標 一 覧 表

測 点 名	X 座 標	Y 座 標	測 点 名	X 座 標	Y 座 標	測 点 名	X 座 標	Y 座 標	測 点 名	X 座 標	Y 座 標	測 点 名	X 座 標	Y 座 標
W44-1	-97239.323	-2421.878	W44-22	-97273.834	-2434.335	W44-31	-97317.253	-2390.865	W44-40	-97260.016	-2418.962	W44-49	-97294.016	-2411.784
W44-2	-97240.752	-2424.515	W44-23	-97286.213	-2438.010	W44-32	-97301.624	-2386.219	W44-41	-97263.094	-2408.601	W44-50	-97295.925	-2405.370
W44-3	-97347.474	-2456.194	W44-24	-97304.427	-2443.416	W44-33	-97297.795	-2385.081	W44-42	-97264.634	-2403.417	W44-51	-97309.695	-2416.390
W44-4	-97351.886	-2453.805	W44-25	-97321.887	-2448.599	W44-34	-97289.221	-2382.532	W44-43	-97266.172	-2398.238	W44-52	-97312.238	-2417.137
W44-5	-97365.660	-2407.468	W44-26	-97336.382	-2452.902	W44-35	-97272.328	-2377.511	W44-44	-97269.250	-2387.874	W44-53	-97320.037	-2419.428
W44-6	-97364.231	-2404.829	W44-27	-97358.269	-2432.333	W44-36	-97251.038	-2382.465	W44-45	-97281.527	-2408.435	W44-54	-97327.690	-2421.676
W44-7	-97256.154	-2372.703	W44-28	-97357.372	-2402.790	W44-37	-97247.957	-2392.828	W44-46	-97283.531	-2401.686	W44-55	-97329.720	-2422.273
W44-8	-97253.515	-2374.132	W44-29	-97335.237	-2396.211	W44-38	-97244.878	-2403.190	W44-47	-97290.198	-2410.663	W44-56	-97329.283	-2423.742
W44-21	-97256.940	-2429.321	W44-30	-97327.603	-2393.941	W44-39	-97241.798	-2413.551	W44-48	-97292.107	-2404.235	W44-57	-97343.780	-2428.039
												W44-58	-97349.396	-2429.703

面積（座標法）計算書

地番：W44-1-1

測点名	[1] X(i)	[2] X(i+1)-X(i-1)	[3] Y(i)	[4] Y(i+1)-Y(i-1)	[2]*[3]	[1]*[4]	方向角	夾角	距離
W44-39	-97241.798	20.694	-2413.551	-2.915	-49945.599999	283480.348304	286-33-17	90-00-44	8.687
W44-1	-97239.323	1.045	-2421.878	-10.964	-2531.948078	1066172.412698	241-32-37	134-59-20	3.000
W44-2	-97240.752	-17.617	-2424.515	-7.443	42713.313761	723753.009445	196-31-57	134-59-20	16.886
W44-21	-97256.940	-19.264	-2429.321	5.553	46798.860855	-540076.403478	106-32-33	90-00-36	10.805
W44-40	-97260.016	15.142	-2418.962	15.769	-36628.322542	-1533735.670967	16-32-33	90-00-00	19.005
合計				倍面積	406.303996	-406.303996			58.383
				面積	203.1519984	203.1519984			

面積（座標法）計算書

地番：W44-1-2

測点名	[1] X(i)	[2] X(i+1)-X(i-1)	[3] Y(i)	[4] Y(i+1)-Y(i-1)	[2]*[3]	[1]*[4]	方向角	夾角	距離
W44-40	-97260.016	-21.296	-2418.962	4.951	51515.223131	-481490.282065	106-32-33	90-00-00	10.809
W44-41	-97263.094	15.139	-2408.601	15.773	-36463.368192	-1534086.186773	16-32-33	90-00-00	19.003
W44-38	-97244.878	21.296	-2403.190	-4.951	-51179.324569	481415.336629	286-33-17	90-00-44	10.809
W44-39	-97241.798	-15.139	-2413.551	-15.773	36538.313629	1533750.288210	196-32-33	89-59-16	19.005
合計				倍面積	410.843999	-410.843999			59.626
				面積	205.4219995	205.4219995			

面積（座標法）計算書

地番：W44-1-3

測点名	[1] X(i)	[2] X(i+1)-X(i-1)	[3] Y(i)	[4] Y(i+1)-Y(i-1)	[2]*[3]	[1]*[4]	方向角	夾角	距離
W44-41	-97263.094	-21.294	-2408.601	4.951	51289.377005	-481594.776629	106-32-33	90-00-00	10.810
W44-43	-97266.172	15.137	-2398.238	15.772	-36300.978450	-1534095.425623	16-32-33	90-00-00	19.001
W44-37	-97247.957	21.294	-2392.828	-4.951	-50953.520938	481519.828694	286-33-17	90-00-44	10.810
W44-38	-97244.878	-15.137	-2403.190	-15.772	36375.926384	1533759.569555	196-32-33	89-59-16	19.003
合計				倍面積	410.804001	-410.804001			59.624
				面積	205.4020006	205.4020006			

面積（座標法）計算書

地番：W44-1-4

測点名	[1] X(i)	[2] X(i+1)-X(i-1)	[3] Y(i)	[4] Y(i+1)-Y(i-1)	[2]*[3]	[1]*[4]	方向角	夾角	距離
W44-43	-97266.172	-21.293	-2398.238	4.954	51065.007445	-481895.589533	106-32-33	90-00-00	10.812
W44-44	-97269.250	15.134	-2387.874	15.774	-36137.169485	-1534300.981444	16-32-33	90-00-00	18.998
W44-36	-97251.038	21.293	-2382.465	-4.954	-50729.141445	481820.611532	286-33-17	90-00-44	10.812
W44-37	-97247.957	-15.134	-2392.828	-15.774	36212.147486	1533965.115444	196-32-33	89-59-16	19.001
合計				倍面積	410.844000	-410.844000			59.623
				面積	205.4220003	205.4220003			

面積（座標法）計算書

地 番： W44-1-5

測点名	[1] X(i)	[2] X(i+1)-X(i-1)	[3] Y(i)	[4] Y(i+1)-Y(i-1)	[2]*[3]	[1]*[4]	方向角	夾 角	距 離
W44-44	-97269.250	-21.290	-2387.874	4.954	50838.211710	-481866.116940	106-32-33	90-00-00	10.811
W44-35	-97272.328	13.097	-2377.511	15.171	-31137.124361	-1475743.307056	16-33-17	90-00-44	16.874
W44-7	-97256.154	18.813	-2372.703	3.379	-44638.346335	-328585.419937	331-33-17	135-00-00	3.001
W44-8	-97253.515	5.116	-2374.132	-9.762	-12144.943998	949380.080313	286-33-17	135-00-00	8.693
W44-36	-97251.038	-15.735	-2382.465	-13.742	37488.526982	1336408.439622	196-32-33	89-59-16	18.998
合計				倍面積	406.323998	-406.323998			58.377
				面 積	203.1619990	203.1619990			

面積（座標法）計算書

地番：W44-1-6

測点名	[1] X(i)	[2] X(i+1)-X(i-1)	[3] Y(i)	[4] Y(i+1)-Y(i-1)	[2]*[3]	[1]*[4]	方向角	夾角	距離
W44-45	-97281.527	-24.587	-2408.435	20.885	59216.125164	-2031740.536488	106-32-33	90-00-00	27.021
W44-34	-97289.221	9.199	-2382.532	30.924	-21915.922539	-3008581.575697	16-33-17	90-00-44	17.623
W44-35	-97272.328	24.587	-2377.511	-20.885	-58455.795109	2031548.422546	286-32-33	89-59-16	27.025
W44-42	-97264.634	-9.199	-2403.417	-30.924	22108.036481	3007821.245642	196-32-33	90-00-00	17.623
合計				倍面積	952.443997	-952.443997			89.292
				面積	476.2219988	476.2219988			

面積（座標法）計算書

地番：W44-1-7

測点名	[1] X(i)	[2] X(i+1)-X(i-1)	[3] Y(i)	[4] Y(i+1)-Y(i-1)	[2]*[3]	[1]*[4]	方向角	夾角	距離
W44-42	-97264.634	24.587	-2403.417	-20.886	-59093.145099	2031440.706551	286-32-33	90-00-00	27.022
W44-21	-97256.940	-9.200	-2429.321	-30.918	22350.628870	3007001.306547	196-31-57	89-59-24	17.623
W44-22	-97273.834	-24.587	-2434.335	20.886	59853.333021	-2031632.862629	106-32-33	90-00-36	27.019
W44-45	-97281.527	9.200	-2408.435	30.918	-22158.472792	-3007761.494469	16-32-33	90-00-00	17.623
合計				倍面積	952.344000	-952.344000			89.287
				面積	476.1720001	476.1720001			

面積（座標法）計算書

地番：W44-2-1

測点名	[1] X(i)	[2] X(i+1)-X(i-1)	[3] Y(i)	[4] Y(i+1)-Y(i-1)	[2]*[3]	[1]*[4]	方向角	夾角	距離
W44-22	-97273.834	-2.681	-2434.335	-36.324	6527.289046	3533357.750472	196-31-57	89-59-24	12.913
W44-23	-97286.213	-20.183	-2438.010	22.551	49205.221710	-2193898.583129	106-34-16	90-02-19	27.362
W44-49	-97294.016	-3.985	-2411.784	27.347	9611.739427	-2660710.949424	16-22-15	89-47-59	3.980
W44-47	-97290.198	1.910	-2410.663	7.549	-4603.397214	-734474.896908	106-32-22	270-10-07	6.705
W44-48	-97292.107	6.667	-2404.235	8.977	-16028.232770	-873362.766094	16-33-17	90-00-55	8.946
W44-46	-97283.531	18.273	-2401.686	-30.100	-43885.859449	2928262.684334	286-32-33	89-59-16	34.059
合計				倍面積	826.760749	-826.760749			93.965
				面積	413.3803748	413.3803748			

面積（座標法）計算書

地番：W44-2-2

測点名	[1] X(i)	[2] X(i+1)-X(i-1)	[3] Y(i)	[4] Y(i+1)-Y(i-1)	[2]*[3]	[1]*[4]	方向角	夾角	距離
W44-33	-97297.795	2.886	-2385.081	21.703	-6884.122030	-2111652.749493	16-33-17	90-00-55	8.945
W44-34	-97289.221	14.263	-2382.532	-16.605	-33983.189988	1615501.371062	286-32-33	89-59-16	19.981
W44-46	-97283.531	-2.886	-2401.686	-21.703	6932.049895	2111343.189444	196-33-17	90-00-44	8.946
W44-48	-97292.107	-14.263	-2404.235	16.605	34292.750038	-1615549.298927	106-32-22	89-59-05	19.981
合計				倍面積	357.487913	-357.487913			57.853
				面積	178.7439570	178.7439570			

面積（座標法）計算書

地番：W44-3-1

測点名	[1] X(i)	[2] X(i+1)-X(i-1)	[3] Y(i)	[4] Y(i+1)-Y(i-1)	[2]*[3]	[1]*[4]	方向角	夾角	距離
W44-47	-97290.198	-1.910	-2410.663	-7.549	4603.397214	734474.896908	196-22-15	89-49-53	3.980
W44-49	-97294.016	-5.727	-2411.784	5.293	13812.314712	-514942.164475	106-34-16	90-12-01	6.692
W44-50	-97295.925	1.910	-2405.370	7.549	-4593.290399	-734518.131948	16-33-17	89-59-01	3.983
W44-48	-97292.107	5.727	-2404.235	-5.293	-13769.079671	514932.057659	286-32-22	89-59-05	6.705
合計				倍面積	53.341856	-53.341856			21.360
				面積	26.6709281	26.6709281			

面積（座標法）計算書

地番：W44-3-2

測点名	[1] X(i)	[2] X(i+1)-X(i-1)	[3] Y(i)	[4] Y(i+1)-Y(i-1)	[2]*[3]	[1]*[4]	方向角	夾角	距離
W44-32	-97301.624	-1.870	-2386.219	20.289	4461.751123	-1974173.097304	16-33-17	89-59-01	3.994
W44-33	-97297.795	9.517	-2385.081	-18.016	-22698.523056	1752925.538523	286-32-22	89-59-05	19.981
W44-48	-97292.107	1.870	-2404.235	-20.289	-4495.437595	1973980.007362	196-33-17	90-00-55	3.983
W44-50	-97295.925	-9.517	-2405.370	18.016	22891.612999	-1752891.852051	106-34-16	90-00-59	19.981
合計				倍面積	159.403469	-159.403469			47.939
				面積	79.7017350	79.7017350			

面積（座標法）計算書

地 番： W44-4

測点名	[1] X(i)	[2] X(i+1)-X(i-1)	[3] Y(i)	[4] Y(i+1)-Y(i-1)	[2]*[3]	[1]*[4]	方向角	夾 角	距 離
W44-54	-97327.690	5.517	-2421.676	-26.062	-13360.075561	2536568.426667	196-22-15	89-51-47	2.116
W44-55	-97329.720	-1.593	-2422.273	-2.066	3858.535835	201090.608745	286-34-15	270-12-00	1.533
W44-56	-97329.283	-19.676	-2423.742	-7.431	47689.606320	723207.776890	196-30-28	89-56-13	20.978
W44-58	-97349.396	-28.089	-2429.703	20.952	68248.762553	-2039669.358892	106-30-28	90-00-00	28.070
W44-28	-97357.372	14.159	-2402.790	33.493	-34021.469269	-3260758.506069	16-33-17	90-02-49	23.092
W44-29	-97335.237	29.682	-2396.211	-18.886	-71124.995876	1838270.688657	286-30-28	89-57-11	26.561
合計				倍面積	1290.364001	-1290.364001			102.350
				面 積	645.1820006	645.1820006			

面積（座標法）計算書

地番：W44-5

測点名	[1] X(i)	[2] X(i+1)-X(i-1)	[3] Y(i)	[4] Y(i+1)-Y(i-1)	[2]*[3]	[1]*[4]	方向角	夾角	距離
W44-58	-97349.396	-0.896	-2429.703	-29.542	2178.099700	2875933.411118	196-30-28	90-00-00	9.254
W44-27	-97358.269	-16.264	-2432.333	22.236	39558.718500	-2164819.490044	106-33-17	90-02-49	25.940
W44-5	-97365.660	-5.962	-2407.468	27.504	14352.901048	-2677919.630022	61-33-17	135-00-00	3.001
W44-6	-97364.231	8.288	-2404.829	4.677	-19930.464133	-455402.815597	16-33-17	135-00-00	7.155
W44-28	-97357.372	14.834	-2402.790	-24.874	-35643.671116	2421692.940545	286-30-28	89-57-11	28.070
合計				倍面積	515.584000	-515.584000			73.420
				面積	257.7920003	257.7920003			

面積（座標法）計算書

地番：W44-6-1

測点名	[1] X(i)	[2] X(i+1)-X(i-1)	[3] Y(i)	[4] Y(i+1)-Y(i-1)	[2]*[3]	[1]*[4]	方向角	夾角	距離
W44-26	-97336.382	-3.694	-2452.902	-28.155	9062.110356	2740546.000529	196-31-57	89-57-42	11.571
W44-3	-97347.474	-15.504	-2456.194	-0.903	38081.386279	87928.843364	151-33-35	135-01-38	5.017
W44-4	-97351.886	-10.794	-2453.805	23.861	26487.209653	-2322958.270784	106-33-17	134-59-42	22.401
W44-27	-97358.269	8.106	-2432.333	25.766	-19716.809625	-2508535.731024	16-30-28	89-57-11	15.112
W44-57	-97343.780	21.887	-2428.039	-20.569	-53142.194664	2002247.455915	286-34-15	90-03-47	25.940
合計				倍面積	771.701999	-771.701999			80.041
				面積	385.8509999	385.8509999			

面積（座標法）計算書

地番：W44-6-2

測点名	[1] X(i)	[2] X(i+1)-X(i-1)	[3] Y(i)	[4] Y(i+1)-Y(i-1)	[2]*[3]	[1]*[4]	方向角	夾角	距離
W44-57	-97343.780	7.099	-2428.039	29.159	-17236.421424	-2838463.261976	16-30-28	89-56-13	15.120
W44-56	-97329.283	21.893	-2423.742	-20.560	-53063.553871	2001103.750674	286-34-15	90-03-47	25.934
W44-25	-97321.887	-7.099	-2448.599	-29.159	17382.375951	2837824.873635	196-31-57	89-57-42	15.120
W44-26	-97336.382	-21.893	-2452.902	20.560	53701.942212	-2001249.705201	106-34-15	90-02-18	25.940
合計				倍面積	784.342867	-784.342867			82.114
				面積	392.1714338	392.1714338			

面積（座標法）計算書

地番：W44-7

測点名	[1] X(i)	[2] X(i+1)-X(i-1)	[3] Y(i)	[4] Y(i+1)-Y(i-1)	[2]*[3]	[1]*[4]	方向角	夾角	距離
W44-24	-97304.427	-9.649	-2443.416	-31.462	23576.480718	3061382.547180	196-31-57	89-58-48	18.212
W44-25	-97321.887	-25.293	-2448.599	21.144	61932.448992	-2057738.809331	106-34-15	90-02-18	27.467
W44-55	-97329.720	9.649	-2422.273	31.462	-23372.466127	-3062178.313590	16-22-15	89-48-00	18.221
W44-52	-97312.238	25.293	-2417.137	-21.144	-61136.682582	2057534.794740	286-33-09	90-10-54	27.415
合計				倍面積	999.781001	-999.781001			91.315
				面積	499.8905006	499.8905006			

面積（座標法）計算書

地番：W44-8

測点名	[1] X(i)	[2] X(i+1)-X(i-1)	[3] Y(i)	[4] Y(i+1)-Y(i-1)	[2]*[3]	[1]*[4]	方向角	夾角	距離
W44-52	-97312.238	10.411	-2417.137	31.632	-25164.119664	-3078186.881839	16-22-15	89-49-06	18.991
W44-49	-97294.016	26.025	-2411.784	-20.873	-62766.400755	2030790.471820	286-34-16	90-12-01	27.362
W44-23	-97286.213	-10.411	-2438.010	-31.632	25381.419530	3077363.661131	196-31-57	89-57-41	19.000
W44-24	-97304.427	-26.025	-2443.416	20.873	63589.621463	-2031007.771686	106-33-09	90-01-12	27.415
合計				倍面積	1040.520573	-1040.520573			92.768
				面積	520.2602868	520.2602868			

面積（座標法）計算書

地番：W44-9

測点名	[1] X(i)	[2] X(i+1)-X(i-1)	[3] Y(i)	[4] Y(i+1)-Y(i-1)	[2]*[3]	[1]*[4]	方向角	夾角	距離
W44-30	-97327.603	2.784	-2393.941	28.563	-6664.352428	-2780004.120301	16-33-17	90-01-17	10.797
W44-31	-97317.253	17.907	-2390.865	-22.449	-42814.315414	2184665.639340	286-29-37	89-56-20	26.621
W44-51	-97309.695	-2.784	-2416.390	-28.563	6726.846611	2779492.622949	196-22-15	89-52-38	10.779
W44-53	-97320.037	-17.907	-2419.428	22.449	43325.812766	-2184728.133523	106-32-00	90-09-45	26.586
合計				倍面積	573.991534	-573.991534			74.783
				面積	286.9957674	286.9957674			

面積（座標法）計算書

地番：W44-10

測点名	[1] X(i)	[2] X(i+1)-X(i-1)	[3] Y(i)	[4] Y(i+1)-Y(i-1)	[2]*[3]	[1]*[4]	方向角	夾角	距離
W44-29	-97335.237	0.087	-2396.211	27.735	-208.483499	-2699593.462315	16-33-17	90-02-49	7.964
W44-30	-97327.603	15.200	-2393.941	-23.218	-36387.614782	2259717.159881	286-32-00	89-58-43	26.586
W44-53	-97320.037	-0.087	-2419.428	-27.735	210.503561	2699171.893607	196-22-15	89-50-15	7.976
W44-54	-97327.690	-15.200	-2421.676	23.218	36809.183491	-2259719.179944	106-30-28	90-08-13	26.561
合計				倍面積	423.588770	-423.588770			69.087
				面積	211.7943854	211.7943854			

面積（座標法）計算書

地番：W44-11

測点名	[1] X(i)	[2] X(i+1)-X(i-1)	[3] Y(i)	[4] Y(i+1)-Y(i-1)	[2]*[3]	[1]*[4]	方向角	夾角	距離
W44-31	-97317.253	8.072	-2390.865	30.171	-19298.424834	-2936189.759144	16-33-17	90-03-40	16.305
W44-32	-97301.624	23.237	-2386.219	-20.919	-55448.282209	2035496.404552	286-34-16	90-00-59	26.673
W44-49	-97294.016	-8.072	-2411.784	-30.171	19467.281063	2935488.671855	196-22-15	89-47-59	16.342
W44-51	-97309.695	-23.237	-2416.390	20.919	56149.369498	-2035665.260782	106-29-37	90-07-22	26.621
合計				倍面積	869.943519	-869.943519			85.941
				面積	434.9717596	434.9717596			