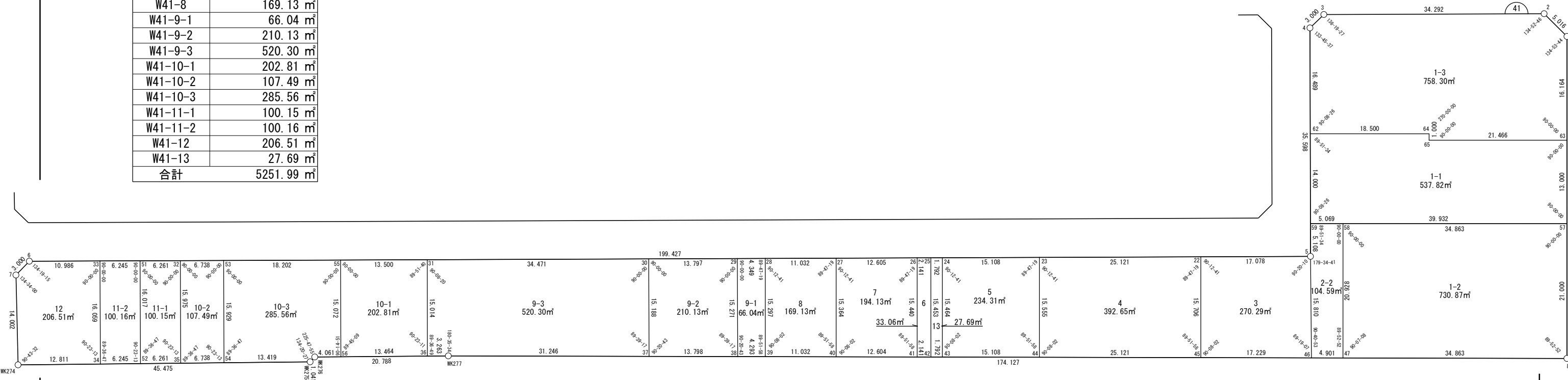


面積一覧表

地番名	地積
W41-1-1	537.82 m ²
W41-1-2	730.87 m ²
W41-1-3	758.30 m ²
W41-2-2	104.59 m ²
W41-3	270.29 m ²
W41-4	392.65 m ²
W41-5	234.31 m ²
W41-6	33.06 m ²
W41-7	194.13 m ²
W41-8	169.13 m ²
W41-9-1	66.04 m ²
W41-9-2	210.13 m ²
W41-9-3	520.30 m ²
W41-10-1	202.81 m ²
W41-10-2	107.49 m ²
W41-10-3	285.56 m ²
W41-11-1	100.15 m ²
W41-11-2	100.16 m ²
W41-12	206.51 m ²
W41-13	27.69 m ²
合計	5251.99 m ²



世界測地系



座 標 一 覧 表

測 点 名	X 座 標	Y 座 標
W41-1	-97261.332	-2186.417
W41-2	-97263.720	-2190.828
W41-3	-97296.608	-2200.540
W41-4	-97299.276	-2199.168
W41-5	-97309.408	-2165.043
W41-6	-97500.671	-2221.519
W41-7	-97503.290	-2220.054
W41-8	-97275.729	-2138.363
W41-22	-97325.787	-2169.879
W41-23	-97349.880	-2176.993
W41-24	-97364.369	-2181.272
W41-25	-97366.088	-2181.779
W41-26	-97368.141	-2182.385
W41-27	-97380.229	-2185.955
W41-28	-97390.810	-2189.079
W41-29	-97394.981	-2190.311
W41-30	-97408.213	-2194.218
W41-31	-97441.274	-2203.980
W41-32	-97478.141	-2214.866
W41-33	-97490.135	-2218.408

測 点 名	X 座 標	Y 座 標
W41-34	-97494.683	-2203.006
W41-35	-97482.665	-2199.545
W41-36	-97445.560	-2189.591
W41-37	-97412.515	-2179.651
W41-38	-97399.306	-2175.664
W41-39	-97395.196	-2174.424
W41-40	-97384.635	-2171.236
W41-41	-97372.568	-2167.594
W41-42	-97370.519	-2166.975
W41-43	-97368.803	-2166.457
W41-44	-97354.340	-2162.091
W41-45	-97330.290	-2154.832
W41-46	-97313.797	-2149.854
W41-47	-97309.105	-2148.437
W41-51	-97484.145	-2216.639
W41-52	-97488.681	-2201.278
W41-53	-97471.678	-2212.958
W41-54	-97476.189	-2197.681
W41-55	-97454.221	-2207.803
W41-56	-97458.490	-2193.348

測 点 名	X 座 標	Y 座 標
W41-57	-97269.702	-2158.480
W41-58	-97303.099	-2168.485
W41-59	-97307.954	-2169.940
W41-62	-97303.970	-2183.361
W41-63	-97265.971	-2170.933
W41-64	-97286.248	-2178.051
W41-65	-97286.535	-2177.093
WK274	-97506.993	-2206.551
WK275	-97463.294	-2193.967
WK276	-97462.389	-2194.481
WK277	-97442.427	-2188.680

面積（座標法）計算書

地番：W41-1-1

測点名	[1] X(i)	[2] X(i+1)-X(i-1)	[3] Y(i)	[4] Y(i+1)-Y(i-1)	[2]*[3]	[1]*[4]	方向角	夾角	距離
W41-63	-97265.971	-16.833	-2170.933	-18.614	36542.462304	1810490.857695	196-40-39	90-00-00	21.466
W41-65	-97286.535	-20.276	-2177.093	-7.119	44143.764894	692534.417739	286-40-39	270-00-00	1.000
W41-64	-97286.248	-17.435	-2178.051	-6.267	37974.114220	609712.668660	196-40-39	90-00-00	18.500
W41-62	-97303.970	-21.707	-2183.361	8.112	47393.801289	-789307.745811	106-32-13	89-51-34	14.000
W41-59	-97307.954	34.268	-2169.940	24.881	-74358.429194	-2421121.036451	16-40-39	90-08-26	39.932
W41-57	-97269.702	41.983	-2158.480	-0.993	-90620.056088	96615.180741	286-40-39	90-00-00	13.000
合計				倍面積	1075.657425	-1075.657425			107.898
				面積	537.8287125	537.8287125			

面積（座標法）計算書

地番：W41-1-2

測点名	[1] X(i)	[2] X(i+1)-X(i-1)	[3] Y(i)	[4] Y(i+1)-Y(i-1)	[2]*[3]	[1]*[4]	方向角	夾角	距離
W41-57	-97269.702	-27.370	-2158.480	-30.122	59077.916893	2929961.703238	196-40-39	90-00-00	34.863
W41-58	-97303.099	-39.403	-2168.485	10.042	85444.546542	-977135.641357	106-40-39	90-00-00	20.928
W41-47	-97309.105	27.370	-2148.437	30.122	-58803.060766	-2931148.598284	16-47-47	90-07-08	34.863
W41-8	-97275.729	39.403	-2138.363	-10.042	-84257.651495	976860.785230	286-40-39	89-52-52	21.000
合計				倍面積	1461.751173	-1461.751173			111.654
				面積	730.8755867	730.8755867			

面積（座標法）計算書

地 番： W41-1-3

測点名	[1] X(i)	[2] X(i+1)-X(i-1)	[3] Y(i)	[4] Y(i+1)-Y(i-1)	[2]*[3]	[1]*[4]	方向角	夾 角	距 離
W41-1	-97261.332	2.251	-2186.417	-19.895	-4922.427577	1935031.295951	241-34-23	134-53-44	5.016
W41-2	-97263.720	-35.276	-2190.828	-14.123	77283.345592	1373664.628577	196-27-09	134-52-46	34.292
W41-3	-97296.608	-35.556	-2200.540	-8.340	78243.121238	811429.951765	152-46-36	136-19-27	3.000
W41-4	-97299.276	-7.361	-2199.168	17.180	16189.033376	-1671573.940284	106-32-13	133-45-37	16.489
W41-62	-97303.970	13.028	-2183.361	21.116	-28445.886058	-2054712.388713	16-40-39	90-08-26	18.500
W41-64	-97286.248	17.435	-2178.051	6.267	-37974.114220	-609712.668660	106-40-39	270-00-00	1.000
W41-65	-97286.535	20.276	-2177.093	7.119	-44143.764894	-692534.417739	16-40-39	90-00-00	21.466
W41-63	-97265.971	25.202	-2170.933	-9.324	-54712.706011	906890.937658	286-40-39	90-00-00	16.164
合計				倍面積	1516.601445	-1516.601445			115.927
				面 積	758.3007226	758.3007226			

面積（座標法）計算書

地番：W41-2-2

測点名	[1] X(i)	[2] X(i+1)-X(i-1)	[3] Y(i)	[4] Y(i+1)-Y(i-1)	[2]*[3]	[1]*[4]	方向角	夾角	距離
W41-58	-97303.099	1.150	-2168.485	-21.502	-2494.716927	2092226.928906	196-40-39	90-00-00	5.069
W41-59	-97307.954	-6.310	-2169.940	3.442	13691.330281	-334965.296533	106-32-13	89-51-34	5.108
W41-5	-97309.408	-5.842	-2165.043	20.086	12648.947220	-1954548.420488	106-06-54	179-34-41	15.810
W41-46	-97313.797	0.304	-2149.854	16.605	-652.593002	-1615912.548279	16-47-47	90-40-53	4.901
W41-47	-97309.105	10.698	-2148.437	-18.631	-22983.778795	1812990.147617	286-40-39	89-52-52	20.928
合計				倍面積	209.188777	-209.188777			51.816
				面積	104.5943887	104.5943887			

面積（座標法）計算書

地番：W41-3

測点名	[1] X(i)	[2] X(i+1)-X(i-1)	[3] Y(i)	[4] Y(i+1)-Y(i-1)	[2]*[3]	[1]*[4]	方向角	夾角	距離
W41-5	-97309.408	-11.990	-2165.043	-20.025	25959.212043	1948643.149358	196-27-04	90-20-10	17.078
W41-22	-97325.787	-20.882	-2169.879	10.210	45311.414284	-993729.823571	106-39-45	90-12-41	15.706
W41-45	-97330.290	11.990	-2154.832	20.025	-25836.788350	-1949061.316225	16-47-47	90-08-02	17.229
W41-46	-97313.797	20.882	-2149.854	-10.210	-44893.247416	993607.399878	286-06-54	89-19-07	15.810
合計				倍面積	540.590560	-540.590560			65.823
				面積	270.2952803	270.2952803			

面積（座標法）計算書

地番：W41-4

測点名	[1] X(i)	[2] X(i+1)-X(i-1)	[3] Y(i)	[4] Y(i+1)-Y(i-1)	[2]*[3]	[1]*[4]	方向角	夾角	距離
W41-22	-97325.787	-19.589	-2169.879	-22.161	42506.531494	2156822.584983	196-27-04	89-47-19	25.121
W41-23	-97349.880	-28.553	-2176.993	7.787	62159.452682	-758098.978721	106-39-45	90-12-41	15.555
W41-44	-97354.340	19.589	-2162.091	22.161	-42353.982033	-2157455.341522	16-47-47	90-08-02	25.121
W41-45	-97330.290	28.553	-2154.832	-7.787	-61526.696143	757946.429260	286-39-45	89-51-58	15.706
合計				倍面積	785.306000	-785.306000			81.503
				面積	392.6530005	392.6530005			

面積（座標法）計算書

地番：W41-5

測点名	[1] X(i)	[2] X(i+1)-X(i-1)	[3] Y(i)	[4] Y(i+1)-Y(i-1)	[2]*[3]	[1]*[4]	方向角	夾角	距離
W41-23	-97349.880	-10.030	-2176.993	-19.180	21834.326819	1867182.211444	196-27-04	89-47-19	15.108
W41-24	-97364.369	-18.924	-2181.272	10.536	41277.474759	-1025809.362258	106-39-45	90-12-41	15.464
W41-43	-97368.803	10.030	-2166.457	19.180	-21728.657387	-1867545.168014	16-47-47	90-08-02	15.108
W41-44	-97354.340	18.924	-2162.091	-10.536	-40914.518189	1025703.692826	286-39-45	89-51-58	15.555
合計				倍面積	468.626001	-468.626001			61.235
				面積	234.3130009	234.3130009			

面積（座標法）計算書

地番：W41-6

測点名	[1] X(i)	[2] X(i+1)-X(i-1)	[3] Y(i)	[4] Y(i+1)-Y(i-1)	[2]*[3]	[1]*[4]	方向角	夾角	距離
W41-25	-97366.088	2.378	-2181.779	-15.410	-5188.183507	1500427.019678	196-27-04	89-47-19	2.141
W41-26	-97368.141	-6.480	-2182.385	14.185	14141.934225	-1381209.205835	106-39-45	90-12-41	15.440
W41-41	-97372.568	-2.378	-2167.594	15.410	5154.451112	-1500526.878072	16-47-47	90-08-02	2.141
W41-42	-97370.519	6.480	-2166.975	-14.185	-14042.075831	1381242.938229	286-39-45	89-51-58	15.453
合計				倍面積	66.125999	-66.125999			35.175
				面積	33.0629996	33.0629996			

面積（座標法）計算書

地番：W41-7

測点名	[1] X(i)	[2] X(i+1)-X(i-1)	[3] Y(i)	[4] Y(i+1)-Y(i-1)	[2]*[3]	[1]*[4]	方向角	夾角	距離
W41-26	-97368.141	-7.661	-2182.385	-18.361	16720.096647	1787791.638757	196-27-04	89-47-19	12.605
W41-27	-97380.229	-16.494	-2185.955	11.149	36054.910785	-1085719.908695	106-39-45	90-12-41	15.364
W41-40	-97384.635	7.661	-2171.236	18.361	-16634.677664	-1788094.485773	16-47-47	90-08-02	12.604
W41-41	-97372.568	16.494	-2167.594	-11.149	-35752.063770	1085634.489712	286-39-45	89-51-58	15.440
合計				倍面積	388.265998	-388.265998			56.013
				面積	194.1329994	194.1329994			

面積（座標法）計算書

地番：W41-8

測点名	[1] X(i)	[2] X(i+1)-X(i-1)	[3] Y(i)	[4] Y(i+1)-Y(i-1)	[2]*[3]	[1]*[4]	方向角	夾角	距離
W41-27	-97380.229	-6.175	-2185.955	-17.843	13499.006553	1737567.805771	196-27-04	89-47-19	11.032
W41-28	-97390.810	-14.967	-2189.079	11.531	32763.927066	-1122995.138385	106-39-45	90-12-41	15.297
W41-39	-97395.196	6.175	-2174.424	17.843	-13427.799903	-1737834.863708	16-47-47	90-08-02	11.032
W41-40	-97384.635	14.967	-2171.236	-11.531	-32496.869129	1122923.931735	286-39-45	89-51-58	15.364
合計				倍面積	338.264587	-338.264587			52.725
				面積	169.1322935	169.1322935			

面積（座標法）計算書

地番：W41-9-1

測点名	[1] X(i)	[2] X(i+1)-X(i-1)	[3] Y(i)	[4] Y(i+1)-Y(i-1)	[2]*[3]	[1]*[4]	方向角	夾角	距離
W41-28	-97390.810	0.215	-2189.079	-15.887	-471.329280	1547222.006998	196-27-04	89-47-19	4.349
W41-29	-97394.981	-8.496	-2190.311	13.415	18608.410535	-1306521.478841	106-27-04	90-00-00	15.271
W41-38	-97399.306	-0.215	-2175.664	15.887	468.440976	-1547356.977304	16-47-47	90-20-43	4.293
W41-39	-97395.196	8.496	-2174.424	-13.415	-18473.440229	1306524.367146	286-39-45	89-51-58	15.297
合計				倍面積	132.082001	-132.082001			39.210
				面積	66.0410006	66.0410006			

面積（座標法）計算書

地番：W41-9-2

測点名	[1] X(i)	[2] X(i+1)-X(i-1)	[3] Y(i)	[4] Y(i+1)-Y(i-1)	[2]*[3]	[1]*[4]	方向角	夾角	距離
W41-37	-97412.515	8.908	-2179.651	18.554	-19415.853249	-1807357.576050	16-47-47	90-20-43	13.798
W41-38	-97399.306	17.534	-2175.664	-10.659	-38147.727850	1038195.211221	286-27-04	89-39-17	15.271
W41-29	-97394.981	-8.908	-2190.311	-18.554	19510.802730	1807032.259529	196-27-04	90-00-00	13.797
W41-30	-97408.213	-17.534	-2194.218	10.659	38473.044370	-1038290.160701	106-27-04	90-00-00	15.188
合計				倍面積	420.266001	-420.266001			58.054
				面積	210.1330006	210.1330006			

面積（座標法）計算書

地番：W41-9-3

測点名	[1] X(i)	[2] X(i+1)-X(i-1)	[3] Y(i)	[4] Y(i+1)-Y(i-1)	[2]*[3]	[1]*[4]	方向角	夾角	距離
W41-30	-97408.213	-28.759	-2194.218	-24.329	63103.411891	2369809.581258	196-27-04	90-00-00	34.471
W41-31	-97441.274	-37.347	-2203.980	4.627	82312.082830	-450856.563562	106-35-24	90-08-20	15.014
W41-36	-97445.560	-1.154	-2189.591	15.300	2525.848457	-1490877.053730	16-12-13	89-36-49	3.263
WK277	-97442.427	33.046	-2188.680	9.940	-72326.630365	-968535.407000	16-47-47	180-35-34	31.246
W41-37	-97412.515	34.214	-2179.651	-5.537	-74574.098645	539418.828867	286-27-04	89-39-17	15.188
合計				倍面積	1040.614167	-1040.614167			99.182
				面積	520.3070838	520.3070838			

面積（座標法）計算書

地番：W41-10-1

測点名	[1] X(i)	[2] X(i+1)-X(i-1)	[3] Y(i)	[4] Y(i+1)-Y(i-1)	[2]*[3]	[1]*[4]	方向角	夾角	距離
W41-56	-97458.490	8.661	-2193.348	18.212	-18996.085748	-1774941.348869	16-12-13	89-45-09	13.464
W41-36	-97445.560	17.216	-2189.591	-10.632	-37695.861541	1036032.243274	286-35-24	90-23-11	15.014
W41-31	-97441.274	-8.661	-2203.980	-18.212	19088.166267	1774627.807388	196-27-04	89-51-40	13.500
W41-55	-97454.221	-17.216	-2207.803	10.632	38009.403022	-1036124.323793	106-27-04	90-00-00	15.072
合計				倍面積	405.622000	-405.622000			57.050
				面積	202.8110001	202.8110001			

面積（座標法）計算書

地番：W41-10-2

測点名	[1] X(i)	[2] X(i+1)-X(i-1)	[3] Y(i)	[4] Y(i+1)-Y(i-1)	[2]*[3]	[1]*[4]	方向角	夾角	距離
W41-53	-97471.678	-1.951	-2212.958	-17.186	4318.164738	1675111.291448	196-27-04	90-00-00	6.738
W41-32	-97478.141	-10.986	-2214.866	13.413	24333.600968	-1307448.615857	106-27-04	90-00-00	15.975
W41-35	-97482.665	1.951	-2199.545	17.186	-4291.992345	-1675300.101055	16-03-51	89-36-47	6.738
W41-54	-97476.189	10.986	-2197.681	-13.413	-24144.791361	1307422.443465	286-27-04	90-23-13	15.929
合計				倍面積	214.981999	-214.981999			45.380
				面積	107.4909996	107.4909996			

面積（座標法）計算書

地 番： W41-10-3

測点名	[1] X(i)	[2] X(i+1)-X(i-1)	[3] Y(i)	[4] Y(i+1)-Y(i-1)	[2]*[3]	[1]*[4]	方向角	夾 角	距 離
W41-54	-97476.189	8.384	-2197.681	18.991	-18426.106679	-1851144.335517	16-03-51	89-36-47	13.419
WK275	-97463.294	13.800	-2193.967	3.199	-30277.791539	-311821.216610	330-24-18	134-20-27	1.041
WK276	-97462.389	4.804	-2194.481	0.619	-10543.070779	-60343.896581	16-12-13	225-47-55	4.061
W41-56	-97458.490	8.168	-2193.348	-13.322	-17914.659383	1298338.567303	286-27-04	90-14-51	15.072
W41-55	-97454.221	-13.189	-2207.803	-19.610	29118.052219	1911065.982858	196-27-04	90-00-00	18.202
W41-53	-97471.678	-21.968	-2212.958	10.123	48614.700163	-986666.225453	106-27-04	90-00-00	15.929
合計				倍面積	571.124000	-571.124000			67.724
				面 積	285.5620004	285.5620004			

面積（座標法）計算書

地番：W41-11-1

測点名	[1] X(i)	[2] X(i+1)-X(i-1)	[3] Y(i)	[4] Y(i+1)-Y(i-1)	[2]*[3]	[1]*[4]	方向角	夾角	距離
W41-52	-97488.681	1.481	-2201.278	17.094	-3259.528582	-1666481.231158	16-03-51	89-36-47	6.261
W41-35	-97482.665	10.541	-2199.545	-13.588	-23184.909171	1324635.205996	286-27-04	90-23-13	15.975
W41-32	-97478.141	-1.481	-2214.866	-17.094	3279.649548	1666301.046124	196-27-04	90-00-00	6.261
W41-51	-97484.145	-10.541	-2216.639	13.588	23365.094205	-1324655.326961	106-27-04	90-00-00	16.017
合計				倍面積	200.305999	-200.305999			44.514
				面積	100.1529998	100.1529998			

面積（座標法）計算書

地番：W41-11-2

測点名	[1] X(i)	[2] X(i+1)-X(i-1)	[3] Y(i)	[4] Y(i+1)-Y(i-1)	[2]*[3]	[1]*[4]	方向角	夾角	距離
W41-51	-97484.145	-1.454	-2216.639	-17.130	3221.904006	1669915.812129	196-27-04	90-00-00	6.245
W41-33	-97490.135	-10.537	-2218.408	13.633	23376.355980	-1329117.941065	106-27-04	90-00-00	16.059
W41-34	-97494.683	1.454	-2203.006	17.130	-3202.087805	-1670096.319929	16-03-51	89-36-47	6.245
W41-52	-97488.681	10.537	-2201.278	-13.633	-23195.848179	1329098.124864	286-27-04	90-23-13	16.017
合計				倍面積	200.324001	-200.324001			44.566
				面積	100.1620007	100.1620007			

面積（座標法）計算書

地番：W41-12

測点名	[1] X(i)	[2] X(i+1)-X(i-1)	[3] Y(i)	[4] Y(i+1)-Y(i-1)	[2]*[3]	[1]*[4]	方向角	夾角	距離
W41-33	-97490.135	-5.988	-2218.408	-18.513	13284.261771	1804844.783859	196-27-04	90-00-00	10.986
W41-6	-97500.671	-13.155	-2221.519	-1.646	29223.057271	160494.899235	150-46-19	134-19-15	3.000
W41-7	-97503.290	-6.322	-2220.054	14.968	14035.650697	-1459450.113137	105-20-19	134-34-00	14.002
WK274	-97506.993	8.607	-2206.551	17.048	-18990.899133	-1662304.010017	16-03-51	90-43-32	12.811
W41-34	-97494.683	16.858	-2203.006	-11.857	-37139.037429	1156001.406882	286-27-04	90-23-13	16.059
合計				倍面積	413.033178	-413.033178			56.858
				面積	206.5165894	206.5165894			

面積（座標法）計算書

地番：W41-13

測点名	[1] X(i)	[2] X(i+1)-X(i-1)	[3] Y(i)	[4] Y(i+1)-Y(i-1)	[2]*[3]	[1]*[4]	方向角	夾角	距離
W41-24	-97364.369	2.716	-2181.272	-15.322	-5923.625553	1491787.620595	196-27-04	89-47-19	1.792
W41-25	-97366.088	-6.149	-2181.779	14.297	13416.014683	-1392004.136393	106-39-45	90-12-41	15.453
W41-42	-97370.519	-2.716	-2166.975	15.322	5884.800624	-1491881.835523	16-47-47	90-08-02	1.792
W41-43	-97368.803	6.149	-2166.457	-14.297	-13321.799755	1392042.961322	286-39-45	89-51-58	15.464
合計				倍面積	55.389999	-55.389999			34.501
				面積	27.6949998	27.6949998			