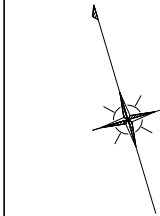
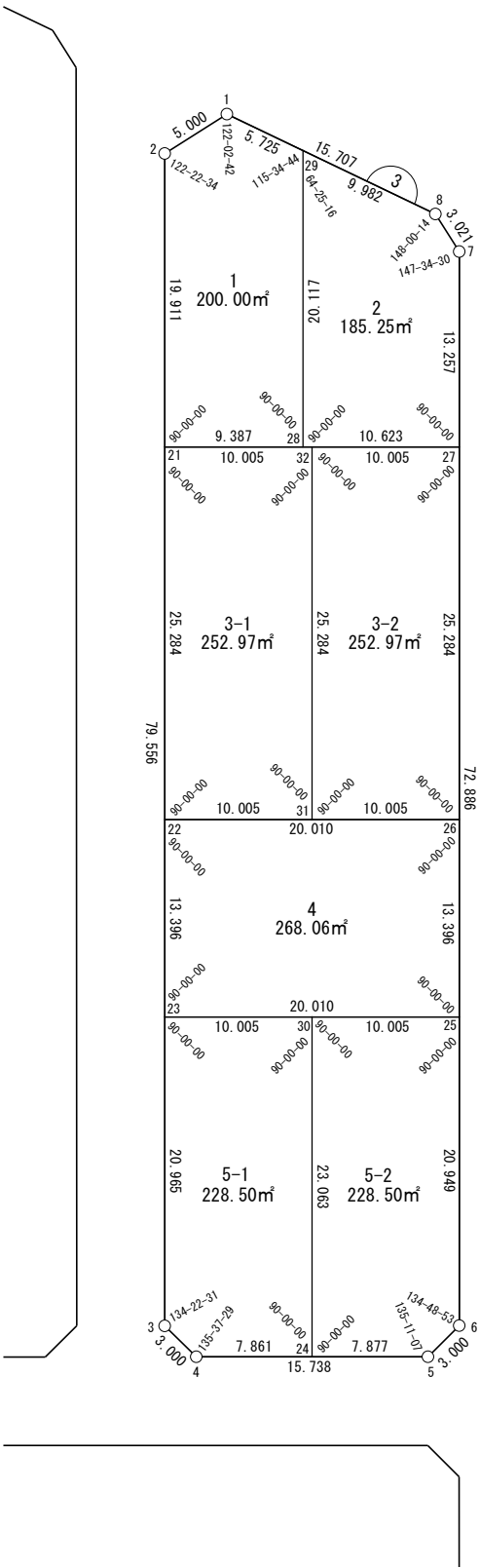


面積一覧表

地番名	面積
W3-1	200.00 m <sup>2</sup>
W3-2	185.25 m <sup>2</sup>
W3-3-1	252.97 m <sup>2</sup>
W3-3-2	252.97 m <sup>2</sup>
W3-4	268.06 m <sup>2</sup>
W3-5-1	228.50 m <sup>2</sup>
W3-5-2	228.50 m <sup>2</sup>
合計	1616.25 m <sup>2</sup>

座 標 一 覧 表

測 点 名	X 座 標	Y 座 標
W3-1	-97307.826	-1470.716
W3-2	-97309.189	-1475.527
W3-3	-97385.448	-1498.194
W3-4	-97388.070	-1496.736
W3-5	-97392.554	-1481.650
W3-6	-97391.134	-1479.008
W3-7	-97321.269	-1458.242
W3-8	-97318.363	-1459.068
W3-21	-97328.275	-1481.200
W3-22	-97352.511	-1488.404
W3-23	-97365.352	-1492.220
W3-24	-97390.310	-1489.201
W3-25	-97371.053	-1473.039
W3-26	-97358.212	-1469.223
W3-27	-97333.976	-1462.019
W3-28	-97330.950	-1472.202
W3-29	-97311.667	-1466.470
W3-30	-97368.203	-1482.630
W3-31	-97355.362	-1478.813
W3-32	-97331.126	-1471.609



世界測地系

# 面積（座標法）計算書

地番：W3-1

測点名	[1] X(i)	[2] X(i+1)-X(i-1)	[3] Y(i)	[4] Y(i+1)-Y(i-1)	[2]*[3]	[1]*[4]	方向角	夾角	距離
W3-2	-97309.189	-20.449	-1475.527	-10.484	30173.316781	1020145.828627	196-33-14	122-22-34	19.911
W3-21	-97328.275	-21.760	-1481.200	3.325	32231.473254	-323602.460640	106-33-14	90-00-00	9.387
W3-28	-97330.950	16.608	-1472.202	14.729	-24450.860832	-1433624.270106	16-33-14	90-00-00	20.117
W3-29	-97311.667	23.124	-1466.470	1.486	-33910.157681	-144576.332582	312-07-58	115-34-44	5.725
W3-1	-97307.826	2.478	-1470.716	-9.056	-3643.769523	881257.232700	254-10-40	122-02-42	5.000
合計				倍面積 面積	400.001999 200.0009999	-400.001999 200.0009999			60.140

# 面積（座標法）計算書

地番：W3-2

測点名	[1] X(i)	[2] X(i+1)-X(i-1)	[3] Y(i)	[4] Y(i+1)-Y(i-1)	[2]*[3]	[1]*[4]	方向角	夾角	距離
W3-28	-97330.950	-22.310	-1472.202	4.452	32844.244584	-433275.136318	106-33-14	90-00-00	10.623
W3-27	-97333.976	9.681	-1462.019	13.960	-14153.523152	-1358804.483022	16-33-14	90-00-00	13.257
W3-7	-97321.269	15.613	-1458.242	2.951	-22767.690276	-287200.514240	344-07-44	147-34-30	3.021
W3-8	-97318.363	9.602	-1459.068	-8.229	-14010.008018	800803.362848	312-07-58	148-00-14	9.982
W3-29	-97311.667	-12.586	-1466.470	-13.134	18457.495537	1278106.252059	196-33-14	64-25-16	20.117
合計				倍面積	370.518674	-370.518674			57.000
				面積	185.2593371	185.2593371			

面積（座標法）計算書

地番：W3-3-1

測点名	[1] X(i)	[2] X(i+1)-X(i-1)	[3] Y(i)	[4] Y(i+1)-Y(i-1)	[2]*[3]	[1]*[4]	方向角	夾角	距離
W3-21	-97328.275	-21.385	-1481.200	-16.794	31676.171152	1634558.187837	196-33-14	90-00-00	25.284
W3-22	-97352.511	-27.087	-1488.404	2.387	40315.981389	-232347.753368	106-33-14	90-00-00	10.005
W3-31	-97355.362	21.385	-1478.813	16.794	-31625.131188	-1635013.089872	16-33-14	90-00-00	25.284
W3-32	-97331.126	27.087	-1471.609	-2.387	-39861.079354	232296.713404	286-33-14	90-00-00	10.005
合計				倍面積	505.941998	-505.941998			70.578
				面積	252.9709991	252.9709991			

# 面積（座標法）計算書

地番：W3-3-2

測点名	[1] X(i)	[2] X(i+1)-X(i-1)	[3] Y(i)	[4] Y(i+1)-Y(i-1)	[2]*[3]	[1]*[4]	方向角	夾角	距離
W3-31	-97355.362	-27.087	-1478.813	2.387	40056.206911	-232354.556846	106-33-14	90-00-00	10.005
W3-26	-97358.212	21.385	-1469.223	16.794	-31420.034337	-1635060.973755	16-33-14	90-00-00	25.284
W3-27	-97333.976	27.087	-1462.019	-2.387	-39601.304874	232303.516883	286-33-14	90-00-00	10.005
W3-32	-97331.126	-21.385	-1471.609	-16.794	31471.074300	1634606.071718	196-33-14	90-00-00	25.284
合計				倍面積	505.942000	-505.942000			70.578
				面積	252.9710005	252.9710005			

# 面積（座標法）計算書

地番：W3-4

測点名	[1] X(i)	[2] X(i+1)-X(i-1)	[3] Y(i)	[4] Y(i+1)-Y(i-1)	[2]*[3]	[1]*[4]	方向角	夾角	距離
W3-25	-97371.053	7.140	-1473.039	22.998	-10517.004375	-2239310.683664	16-33-14	90-00-00	13.396
W3-26	-97358.212	18.542	-1469.223	-15.364	-27242.550182	1495829.266677	286-33-14	90-00-00	20.010
W3-22	-97352.511	-7.140	-1488.404	-22.998	10626.699447	2238884.256735	196-33-14	90-00-00	13.396
W3-23	-97365.352	-18.542	-1492.220	15.364	27668.977111	-1495938.961749	106-33-14	90-00-00	20.010
合計				倍面積	536.122001	-536.122001			66.812
				面積	268.0610006	268.0610006			

# 面積（座標法）計算書

地番：W3-5-1

測点名	[1] X(i)	[2] X(i+1)-X(i-1)	[3] Y(i)	[4] Y(i+1)-Y(i-1)	[2]*[3]	[1]*[4]	方向角	夾角	距離
W3-23	-97365.352	-17.246	-1492.220	-15.564	25734.143136	1515368.393028	196-33-14	90-00-00	20.965
W3-3	-97385.448	-22.718	-1498.194	-4.516	34036.290872	439754.168620	150-55-45	134-22-31	3.000
W3-4	-97388.070	-4.862	-1496.736	8.993	7276.729493	-875780.629154	106-33-14	135-37-29	7.861
W3-24	-97390.310	19.868	-1489.201	14.106	-29586.847863	-1373794.121730	16-33-14	90-00-00	23.063
W3-30	-97368.203	24.958	-1482.630	-3.019	-37003.313638	293995.187234	286-33-14	90-00-00	10.005
合計				倍面積	457.002001	-457.002001			64.894
				面積	228.5010007	228.5010007			

# 面積（座標法）計算書

地番：W3-5-2

測点名	[1] X(i)	[2] X(i+1)-X(i-1)	[3] Y(i)	[4] Y(i+1)-Y(i-1)	[2]*[3]	[1]*[4]	方向角	夾角	距離
W3-24	-97390.310	-24.352	-1489.201	0.979	36264.346020	-95390.896715	106-33-14	90-00-00	7.877
W3-5	-97392.554	-0.824	-1481.650	10.193	1220.610599	-992714.388146	61-44-21	135-11-07	3.000
W3-6	-97391.134	21.501	-1479.008	8.611	-31800.034811	-838636.173665	16-33-14	134-48-53	20.949
W3-25	-97371.053	22.931	-1473.039	-3.622	-33778.397374	352665.706125	286-33-14	90-00-00	10.005
W3-30	-97368.203	-19.257	-1482.630	-16.162	28550.477567	1573618.750401	196-33-14	90-00-00	23.063
合計				倍面積	457.002001	-457.002001			64.894
				面積	228.5010006	228.5010006			