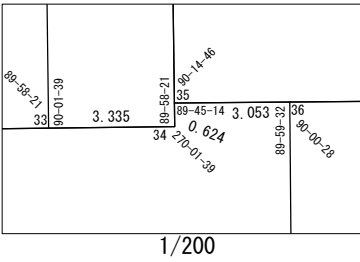
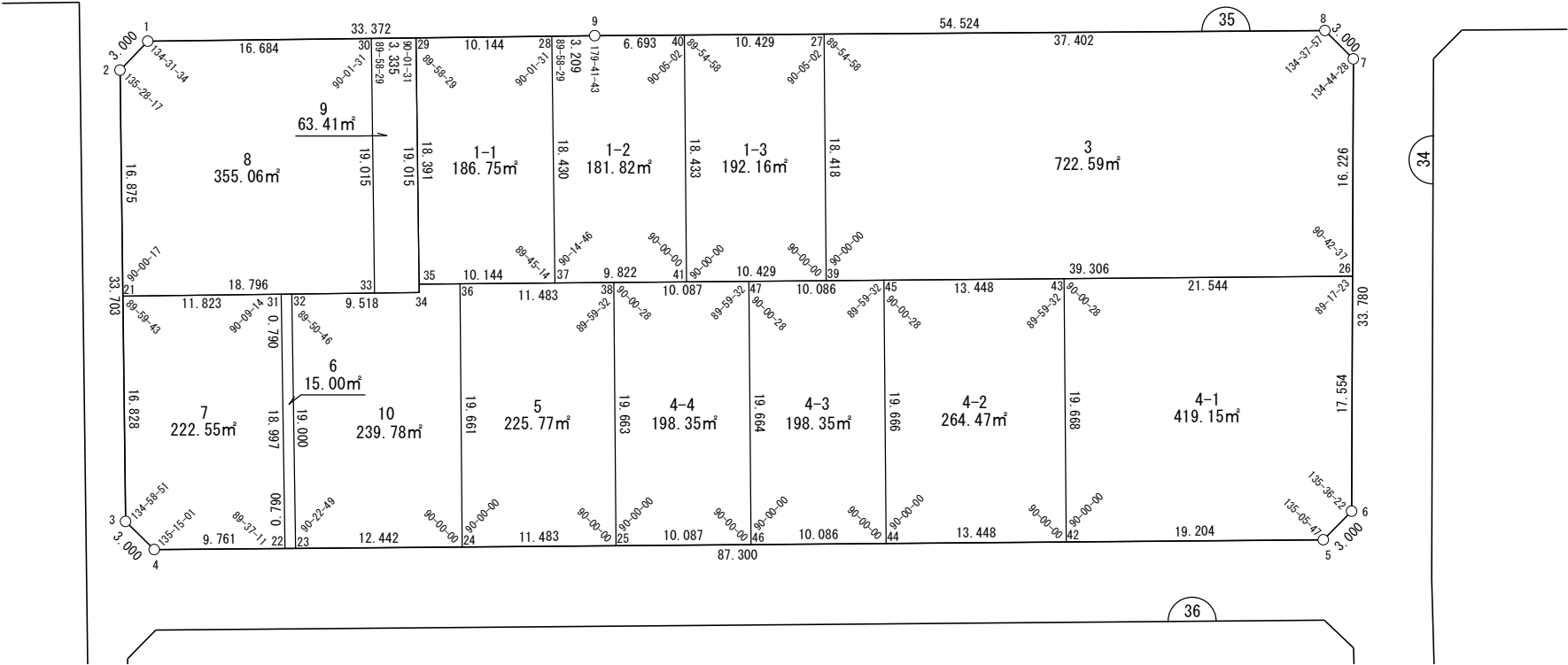


面積一覧表

地番名	地積
W35-1-1	186.75㎡
W35-1-2	181.82㎡
W35-1-3	192.16㎡
W35-3	722.59㎡
W35-4-1	419.15㎡
W35-4-2	264.47㎡
W35-4-3	198.35㎡
W35-4-4	198.35㎡
W35-5	225.77㎡
W35-6	15.00㎡
W35-7	222.55㎡
W35-8	355.06㎡
W35-9	63.41㎡
W35-10	239.78㎡
合計	3485.21㎡

座 標 一 覧 表

測 点 名	X 座 標	Y 座 標
W35-1	-97572.576	-2023.762
W35-2	-97574.039	-2026.381
W35-3	-97606.389	-2035.834
W35-4	-97609.026	-2034.404
W35-5	-97633.848	-1950.707
W35-6	-97632.422	-1948.067
W35-7	-97600.156	-1938.067
W35-8	-97597.508	-1939.477
W35-9	-97581.936	-1991.730
W35-21	-97590.236	-2031.114
W35-22	-97611.802	-2025.046
W35-23	-97612.026	-2024.289
W35-24	-97615.564	-2012.360
W35-25	-97618.829	-2001.352
W35-26	-97615.655	-1942.870
W35-27	-97586.826	-1975.321
W35-28	-97581.036	-1994.810
W35-29	-97578.191	-2004.547
W35-30	-97577.255	-2007.748
W35-31	-97593.553	-2019.766
W35-32	-97593.775	-2019.008
W35-33	-97595.509	-2013.073
W35-34	-97596.445	-2009.872
W35-35	-97595.846	-2009.698
W35-36	-97596.714	-2006.770
W35-37	-97598.729	-1999.972
W35-38	-97599.977	-1995.761
W35-39	-97604.484	-1980.555
W35-40	-97583.848	-1985.316
W35-41	-97601.520	-1990.555
W35-42	-97628.388	-1969.118
W35-43	-97609.532	-1963.526
W35-44	-97624.564	-1982.011
W35-45	-97605.710	-1976.419
W35-46	-97621.697	-1991.681
W35-47	-97602.844	-1986.090



世界測地系

面積（座標法）計算書

地番：W35-1-1

測点名	[1] X(i)	[2] X(i+1)-X(i-1)	[3] Y(i)	[4] Y(i+1)-Y(i-1)	[2]*[3]	[1]*[4]	方向角	夾角	距離
W35-28	-97581.036	20.538	-1994.810	-4.575	-40969.640800	446416.749045	286-17-23	90-01-31	10.144
W35-29	-97578.191	-14.810	-2004.547	-14.888	29687.298142	1452703.102752	196-15-52	89-58-29	18.391
W35-35	-97595.846	-20.538	-2009.698	4.575	41275.403643	-446484.502202	106-30-38	90-14-46	10.144
W35-37	-97598.729	14.810	-1999.972	14.888	-29619.544984	-1453008.865594	16-15-52	89-45-14	18.430
合計				倍面積	373.515999	-373.515999			57.109
				面積	186.7579999	186.7579999			

面積（座標法）計算書

地番：W35-1-2

測点名	[1] X(i)	[2] X(i+1)-X(i-1)	[3] Y(i)	[4] Y(i+1)-Y(i-1)	[2]*[3]	[1]*[4]	方向角	夾角	距離
W35-40	-97583.848	19.584	-1985.316	-1.175	-38880.856622	114705.663703	286-35-40	90-05-02	6.693
W35-9	-97581.936	2.811	-1991.730	-9.494	-5599.594148	926425.212525	286-17-23	179-41-43	3.209
W35-28	-97581.036	-16.793	-1994.810	-8.242	33498.481839	804236.904097	196-15-52	89-58-29	18.430
W35-37	-97598.729	-20.484	-1999.972	4.255	40967.875971	-415315.490439	106-30-38	90-14-46	9.822
W35-41	-97601.520	14.881	-1990.555	14.656	-29622.257240	-1430415.939687	16-30-38	90-00-00	18.433
合計				倍面積	363.649800	-363.649800			56.587
				面積	181.8249000	181.8249000			

面積（座標法）計算書

地番：W35-1-3

測点名	[1] X(i)	[2] X(i+1)-X(i-1)	[3] Y(i)	[4] Y(i+1)-Y(i-1)	[2]*[3]	[1]*[4]	方向角	夾角	距離
W35-41	-97601.520	-20.637	-1990.555	4.761	41078.641405	-464674.950476	106-30-38	90-00-00	10.429
W35-39	-97604.484	14.694	-1980.555	15.234	-29102.641290	-1486863.994426	16-30-38	90-00-00	18.418
W35-27	-97586.826	20.637	-1975.321	-4.761	-40764.269720	464604.992359	286-35-40	90-05-02	10.429
W35-40	-97583.848	-14.694	-1985.316	-15.234	29172.599406	1486549.622742	196-30-38	89-54-58	18.433
合計				倍面積	384.329800	-384.329800			57.709
				面積	192.1649005	192.1649005			

面積（座標法）計算書

地番：W35-3

測点名	[1] X(i)	[2] X(i+1)-X(i-1)	[3] Y(i)	[4] Y(i+1)-Y(i-1)	[2]*[3]	[1]*[4]	方向角	夾角	距離
W35-39	-97604.484	-28.829	-1980.555	32.451	57096.450069	-3167333.497733	106-30-38	90-00-00	39.306
W35-26	-97615.655	4.328	-1942.870	42.489	-8409.385916	-4147559.689387	17-13-15	90-42-37	16.226
W35-7	-97600.156	18.147	-1938.067	3.394	-35169.265774	-331222.994659	331-57-43	134-44-28	3.000
W35-8	-97597.508	13.330	-1939.477	-37.255	-25852.894101	3635949.546996	286-35-40	134-37-57	37.402
W35-27	-97586.826	-6.976	-1975.321	-41.079	13780.286903	4008721.443603	196-30-38	89-54-58	18.418
合計				倍面積	1445.191181	-1445.191181			114.352
				面積	722.5955905	722.5955905			

面積（座標法）計算書

地番：W35-4-1

測点名	[1] X(i)	[2] X(i+1)-X(i-1)	[3] Y(i)	[4] Y(i+1)-Y(i-1)	[2]*[3]	[1]*[4]	方向角	夾角	距離
W35-42	-97628.388	-24.316	-1969.118	12.819	47880.884347	-1251506.061180	106-31-06	90-00-00	19.204
W35-5	-97633.848	-4.034	-1950.707	21.050	7868.766398	-2055237.974085	61-36-53	135-05-47	3.000
W35-6	-97632.422	18.193	-1948.067	7.836	-35441.807439	-765085.909052	17-13-15	135-36-22	17.554
W35-26	-97615.655	22.890	-1942.870	-15.458	-44471.627114	1508991.328999	286-30-38	89-17-23	21.544
W35-43	-97609.532	-12.733	-1963.526	-26.247	25002.085807	2562000.313318	196-31-06	90-00-28	19.668
合計				倍面積 面積	838.301999 419.1510000	-838.301999 419.1510000			80.970

面積（座標法）計算書

地番：W35-4-2

測点名	[1] X(i)	[2] X(i+1)-X(i-1)	[3] Y(i)	[4] Y(i+1)-Y(i-1)	[2]*[3]	[1]*[4]	方向角	夾角	距離
W35-44	-97624.564	-22.678	-1982.011	7.301	44947.217323	-712780.276713	106-31-06	90-00-00	13.448
W35-42	-97628.388	15.032	-1969.118	18.485	-29600.451886	-1804626.714783	16-31-06	90-00-00	19.668
W35-43	-97609.532	22.678	-1963.526	-7.301	-44528.030037	712670.521999	286-30-38	89-59-32	13.448
W35-45	-97605.710	-15.032	-1976.419	-18.485	29710.206600	1804207.527497	196-31-06	90-00-28	19.666
合計				倍面積	528.942000	-528.942000			66.230
				面積	264.4710000	264.4710000			

面積（座標法）計算書

地番：W35-4-3

測点名	[1] X(i)	[2] X(i+1)-X(i-1)	[3] Y(i)	[4] Y(i+1)-Y(i-1)	[2]*[3]	[1]*[4]	方向角	夾角	距離
W35-46	-97621.697	-21.721	-1991.681	4.079	43260.473809	-398213.157406	106-31-06	90-00-00	10.086
W35-44	-97624.564	15.986	-1982.011	15.262	-31684.908599	-1489910.981892	16-31-06	90-00-00	19.666
W35-45	-97605.710	21.721	-1976.419	-4.079	-42928.982041	398147.947174	286-30-38	89-59-32	10.086
W35-47	-97602.844	-15.986	-1986.090	-15.262	31750.118830	1489579.490123	196-31-06	90-00-28	19.664
合計				倍面積	396.701999	-396.701999			59.502
				面積	198.3510000	198.3510000			

面積（座標法）計算書

地番：W35-4-4

測点名	[1] X(i)	[2] X(i+1)-X(i-1)	[3] Y(i)	[4] Y(i+1)-Y(i-1)	[2]*[3]	[1]*[4]	方向角	夾角	距離
W35-47	-97602.844	21.719	-1986.090	-4.080	-43136.826963	398245.857145	286-30-38	89-59-32	10.087
W35-38	-97599.977	-15.985	-1995.761	-15.262	31901.646996	1489568.521638	196-31-06	90-00-28	19.663
W35-25	-97618.829	-21.719	-2001.352	4.080	43468.309076	-398311.079031	106-31-06	90-00-00	10.087
W35-46	-97621.697	15.985	-1991.681	15.262	-31836.425110	-1489900.003751	16-31-06	90-00-00	19.664
合計				倍面積	396.703999	-396.703999			59.501
				面積	198.3519995	198.3519995			

面積（座標法）計算書

地番：W35-5

測点名	[1] X(i)	[2] X(i+1)-X(i-1)	[3] Y(i)	[4] Y(i+1)-Y(i-1)	[2]*[3]	[1]*[4]	方向角	夾角	距離
W35-24	-97615.564	-22.115	-2012.360	5.419	44502.780082	-528934.119803	106-31-06	90-00-00	11.483
W35-25	-97618.829	15.587	-2001.352	16.599	-31194.317323	-1620414.821917	16-31-06	90-00-00	19.663
W35-38	-97599.977	22.115	-1995.761	-5.419	-44135.688877	528849.663011	286-30-38	89-59-32	11.483
W35-36	-97596.714	-15.587	-2006.770	-16.599	31278.774116	1620047.730712	196-31-06	90-00-28	19.661
合計				倍面積	451.547997	-451.547997			62.290
				面積	225.7739989	225.7739989			

面積（座標法）計算書

地番：W35-6

測点名	[1] X(i)	[2] X(i+1)-X(i-1)	[3] Y(i)	[4] Y(i+1)-Y(i-1)	[2]*[3]	[1]*[4]	方向角	夾角	距離
W35-22	-97611.802	-18.473	-2025.046	-4.523	37408.649674	441518.657955	106-31-06	90-22-49	0.790
W35-23	-97612.026	18.027	-2024.289	6.038	-36491.693050	-589411.205465	16-08-17	89-37-11	19.000
W35-32	-97593.775	18.473	-2019.008	4.523	-37297.104133	-441437.118413	286-17-31	90-09-14	0.790
W35-31	-97593.553	-18.027	-2019.766	-6.038	36410.153508	589299.659924	196-08-17	89-50-46	18.997
合計				倍面積	30.005998	-30.005998			39.577
				面積	15.0029993	15.0029993			

面積（座標法）計算書

地 番： W35-7

測点名	[1] X(i)	[2] X(i+1)-X(i-1)	[3] Y(i)	[4] Y(i+1)-Y(i-1)	[2]*[3]	[1]*[4]	方向角	夾 角	距 離
W35-31	-97593.553	21.565	-2019.766	-6.068	-43556.800048	592213.090991	286-17-31	90-09-14	11.823
W35-21	-97590.236	-12.836	-2031.114	-16.068	26071.178206	1568075.302548	196-17-14	89-59-43	16.828
W35-3	-97606.389	-18.790	-2035.834	-3.290	38253.419763	321101.321391	151-32-15	135-15-01	3.000
W35-4	-97609.026	-5.413	-2034.404	10.788	11011.322531	-1052969.954722	106-31-06	134-58-51	9.761
W35-22	-97611.802	15.473	-2025.046	14.638	-31334.008206	-1428864.872455	16-08-17	89-37-11	18.997
合計				倍面積 面 積	445.112246 222.5561234	-445.112246 222.5561234			60.409

面積（座標法）計算書

地番：W35-8

測点名	[1] X(i)	[2] X(i+1)-X(i-1)	[3] Y(i)	[4] Y(i+1)-Y(i-1)	[2]*[3]	[1]*[4]	方向角	夾角	距離
W35-30	-97577.255	22.934	-2007.748	-10.689	-46044.721405	1042981.718650	286-17-23	90-01-31	16.684
W35-1	-97572.576	3.217	-2023.762	-18.634	-6509.927457	1818139.274254	240-48-57	134-31-34	3.000
W35-2	-97574.039	-17.661	-2026.381	-7.352	35787.374436	717368.879312	196-17-14	135-28-17	16.875
W35-21	-97590.236	-21.471	-2031.114	13.308	43609.070284	-1298750.794013	106-17-31	90-00-17	18.796
W35-33	-97595.509	12.981	-2013.073	23.366	-26131.667856	-2280449.206204	16-15-52	89-58-21	19.015
合計				倍面積 面積	710.128001 355.0640006	-710.128001 355.0640006			74.370

面積（座標法）計算書

地番：W35-9

測点名	[1] X(i)	[2] X(i+1)-X(i-1)	[3] Y(i)	[4] Y(i+1)-Y(i-1)	[2]*[3]	[1]*[4]	方向角	夾角	距離
W35-33	-97595.509	-19.189	-2013.073	-2.125	38629.502291	207345.758297	106-17-31	90-01-39	3.335
W35-34	-97596.445	17.318	-2009.872	8.527	-34807.698917	-832157.423157	16-15-52	89-58-21	19.015
W35-29	-97578.191	19.189	-2004.547	2.125	-38465.884312	-207308.964706	286-17-23	90-01-31	3.335
W35-30	-97577.255	-17.318	-2007.748	-8.527	34770.905326	831993.805178	196-15-52	89-58-29	19.015
合計				倍面積	126.824388	-126.824388			44.700
				面積	63.4121945	63.4121945			

面積（座標法）計算書

地番：W35-10

測点名	[1] X(i)	[2] X(i+1)-X(i-1)	[3] Y(i)	[4] Y(i+1)-Y(i-1)	[2]*[3]	[1]*[4]	方向角	夾角	距離
W35-36	-97596.714	19.718	-2006.770	2.663	-39568.765744	-259882.569330	286-30-38	89-59-32	3.053
W35-35	-97595.846	0.269	-2009.698	-3.102	-540.766428	302746.325786	196-15-52	89-45-14	0.624
W35-34	-97596.445	2.071	-2009.872	-9.310	-4163.125678	908621.085247	286-17-31	270-01-39	9.518
W35-32	-97593.775	-15.581	-2019.008	-14.417	31459.110660	1406962.556907	196-08-17	89-50-46	19.000
W35-23	-97612.026	-21.789	-2024.289	6.647	44107.177516	-648842.804969	106-31-06	90-22-49	12.442
W35-24	-97615.564	15.312	-2012.360	17.519	-30814.055179	-1710084.168787	16-31-06	90-00-00	19.661
合計				倍面積	479.575145	-479.575145			64.298
				面積	239.7875729	239.7875729			