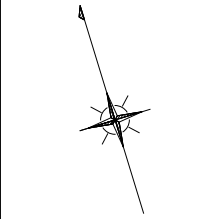
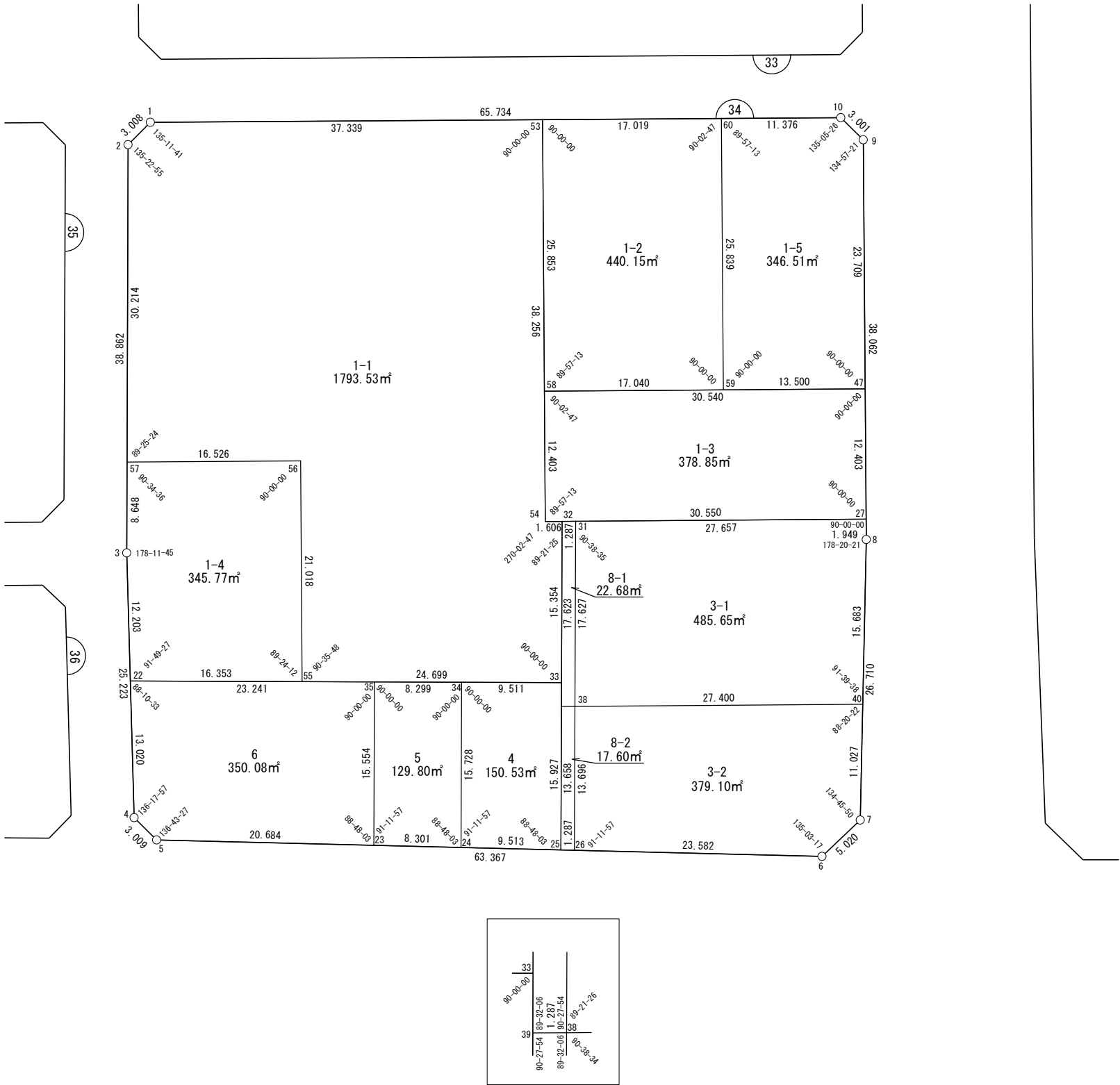


面積一覧表

地番名	地積
W34-1-1	1793.53 m <sup>2</sup>
W34-1-2	440.15 m <sup>2</sup>
W34-1-3	378.85 m <sup>2</sup>
W34-1-4	345.77 m <sup>2</sup>
W34-1-5	346.50 m <sup>2</sup>
W34-3-1	485.65 m <sup>2</sup>
W34-3-2	379.10 m <sup>2</sup>
W34-4	150.53 m <sup>2</sup>
W34-5	129.80 m <sup>2</sup>
W34-6	350.08 m <sup>2</sup>
W34-8-1	22.68 m <sup>2</sup>
W34-8-2	17.60 m <sup>2</sup>
合計	4840.24 m <sup>2</sup>

座 標 一 覧 表

測 点 名	X 座 標	Y 座 標
W34-1	-97600.465	-1929.692
W34-2	-97601.886	-1932.343
W34-3	-97639.010	-1943.832
W34-4	-97663.329	-1950.527
W34-5	-97665.978	-1949.100
W34-6	-97685.996	-1888.978
W34-7	-97683.754	-1884.487
W34-8	-97658.385	-1876.129
W34-9	-97621.904	-1865.272
W34-10	-97619.266	-1866.703
W34-22	-97650.776	-1947.071
W34-23	-97672.512	-1929.475
W34-24	-97675.135	-1921.599
W34-25	-97678.140	-1912.573
W34-26	-97678.547	-1911.352
W34-27	-97656.517	-1875.573
W34-31	-97648.628	-1902.081
W34-32	-97648.261	-1903.315
W34-33	-97662.926	-1907.859
W34-34	-97660.111	-1916.944
W34-35	-97657.655	-1924.871
W34-38	-97665.465	-1907.298
W34-39	-97665.094	-1908.530
W34-40	-97673.280	-1881.036
W34-47	-97644.629	-1872.035
W34-53	-97611.145	-1893.912
W34-54	-97647.802	-1904.854
W34-55	-97655.616	-1931.451
W34-56	-97635.476	-1925.440
W34-57	-97630.749	-1941.276
W34-58	-97635.918	-1901.307
W34-59	-97640.778	-1884.974
W34-60	-97616.012	-1877.604



世界測地系

# 面積（座標法）計算書

地 番： W34-1-1

測点名	[1] X(i)	[2] X(i+1)-X(i-1)	[3] Y(i)	[4] Y(i+1)-Y(i-1)	[2]*[3]	[1]*[4]	方向角	夾 角	距 離
W34-1	-97600.465	9.259	-1929.692	-38.431	-17866.224288	3750851.996789	241-48-51	135-11-41	3.008
W34-2	-97601.886	-30.284	-1932.343	-11.584	58519.688070	1130632.423052	197-11-46	135-22-55	30.214
W34-57	-97630.749	-33.590	-1941.276	6.903	65207.784167	-673969.735145	106-37-10	89-25-24	16.526
W34-56	-97635.476	-24.867	-1925.440	9.824	47879.378779	-959213.799238	196-37-10	270-00-00	21.018
W34-55	-97655.616	-27.450	-1931.451	17.581	53018.940302	-1716875.964013	107-12-58	90-35-48	24.699
W34-33	-97662.926	7.355	-1907.859	28.137	-14033.149815	-2747912.554991	17-12-58	90-00-00	15.354
W34-32	-97648.261	15.124	-1903.315	3.005	-28785.652107	-293406.987762	286-34-23	89-21-25	1.606
W34-54	-97647.802	37.116	-1904.854	9.402	-70700.795441	-918100.740980	16-37-10	270-02-47	38.256
W34-53	-97611.145	47.337	-1893.912	-24.837	-89652.905476	2424408.298097	286-37-10	90-00-00	37.339
合計				倍面積	3587.064190	-3587.064190			188.020
				面 積	1793.5320954	1793.5320954			

面積（座標法）計算書

地番：W34-1-2

測点名	[1] X(i)	[2] X(i+1)-X(i-1)	[3] Y(i)	[4] Y(i+1)-Y(i-1)	[2]*[3]	[1]*[4]	方向角	夾角	距離
W34-53	-97611.145	-19.905	-1893.912	-23.703	37698.861633	2313635.242226	196-37-10	90-00-00	25.853
W34-58	-97635.918	-29.634	-1901.307	8.938	56342.380467	-872665.504873	106-34-23	89-57-13	17.040
W34-59	-97640.778	19.905	-1884.974	23.703	-37520.949102	-2314337.632496	16-34-23	90-00-00	25.839
W34-60	-97616.012	29.634	-1877.604	-8.938	-55639.990196	872487.592341	286-37-10	90-02-47	17.019
合計				倍面積	880.302801	-880.302801			85.751
				面積	440.1514008	440.1514008			

# 面積（座標法）計算書

地番：W34-1-3

測点名	[1] X(i)	[2] X(i+1)-X(i-1)	[3] Y(i)	[4] Y(i+1)-Y(i-1)	[2]*[3]	[1]*[4]	方向角	夾角	距離
W34-58	-97635.918	-3.174	-1901.307	-32.819	6034.183842	3204312.123396	196-37-10	90-02-47	12.403
W34-54	-97647.802	-20.599	-1904.854	25.734	39238.089125	-2512843.035440	106-34-23	89-57-13	30.550
W34-27	-97656.517	3.174	-1875.573	32.819	-5952.512586	-3204988.161711	16-34-23	90-00-00	12.403
W34-47	-97644.629	20.599	-1872.035	-25.734	-38562.050810	2512761.364184	286-34-23	90-00-00	30.540
合計				倍面積	757.709570	-757.709570			85.896
				面積	378.8547855	378.8547855			

# 面積（座標法）計算書

地番：W34-1-4

測点名	[1] X(i)	[2] X(i+1)-X(i-1)	[3] Y(i)	[4] Y(i+1)-Y(i-1)	[2]*[3]	[1]*[4]	方向角	夾角	距離
W34-57	-97630.749	-3.534	-1941.276	-18.393	6861.070022	1795673.773656	197-11-46	90-34-36	8.648
W34-3	-97639.010	-20.027	-1943.832	-5.796	38928.532426	565878.449919	195-23-31	178-11-45	12.203
W34-22	-97650.776	-16.606	-1947.071	12.381	32332.429733	-1209020.229858	107-12-58	91-49-27	16.353
W34-55	-97655.616	15.300	-1931.451	21.631	-29551.112685	-2112437.333671	16-37-10	89-24-12	21.018
W34-56	-97635.476	24.867	-1925.440	-9.824	-47879.378779	959213.799238	286-37-10	90-00-00	16.526
合計				倍面積	691.540716	-691.540716			74.748
				面積	345.7703584	345.7703584			

# 面積（座標法）計算書

地番：W34-1-5

測点名	[1] X(i)	[2] X(i+1)-X(i-1)	[3] Y(i)	[4] Y(i+1)-Y(i-1)	[2]*[3]	[1]*[4]	方向角	夾角	距離
W34-60	-97616.012	-21.512	-1877.604	-18.271	40391.105252	1783558.482645	196-34-23	89-57-13	25.839
W34-59	-97640.778	-28.616	-1884.974	5.569	53941.363843	-543758.736289	106-34-23	90-00-00	13.500
W34-47	-97644.629	18.874	-1872.035	19.702	-35332.007587	-1923796.537312	16-34-23	90-00-00	23.709
W34-9	-97621.904	25.363	-1865.272	5.332	-47308.478358	-520510.342720	331-31-44	134-57-21	3.001
W34-10	-97619.266	5.892	-1866.703	-12.332	-10998.967952	1203814.118479	286-37-10	135-05-26	11.376
合計				倍面積	693.015196	-693.015196			77.425
				面積	346.5075982	346.5075982			

# 面積（座標法）計算書

地 番： W34-3-1

測点名	[1] X(i)	[2] X(i+1)-X(i-1)	[3] Y(i)	[4] Y(i+1)-Y(i-1)	[2]*[3]	[1]*[4]	方向角	夾 角	距 離
W34-31	-97648.628	-8.948	-1902.081	-31.725	17019.865776	3097917.188235	197-12-58	90-38-35	17.627
W34-38	-97665.465	-24.653	-1907.298	21.045	47019.889872	-2055364.928875	106-34-24	89-21-26	27.400
W34-40	-97673.280	7.080	-1881.036	31.169	-13317.022981	-3044389.377418	18-14-02	91-39-38	15.683
W34-8	-97658.385	16.764	-1876.129	5.463	-31451.066723	-533521.153098	16-34-23	178-20-21	1.949
W34-27	-97656.517	9.757	-1875.573	-25.952	-18300.361280	2534386.966492	286-34-23	90-00-00	27.657
合計				倍面積	971.304664	-971.304664			90.316
				面 積	485.6523322	485.6523322			

# 面積（座標法）計算書

地番：W34-3-2

測点名	[1] X(i)	[2] X(i+1)-X(i-1)	[3] Y(i)	[4] Y(i+1)-Y(i-1)	[2]*[3]	[1]*[4]	方向角	夾角	距離
W34-38	-97665.465	-5.266	-1907.298	-30.316	10044.165253	2960785.822623	197-12-58	90-38-34	13.696
W34-26	-97678.547	-20.531	-1911.352	18.321	39242.815267	-1789529.590907	108-24-55	91-11-57	23.582
W34-6	-97685.996	-5.207	-1888.978	26.865	9836.660063	-2624353.976705	63-28-12	135-03-17	5.020
W34-7	-97683.754	12.716	-1884.487	7.941	-23962.493016	-775746.830926	18-14-02	134-45-50	11.027
W34-40	-97673.280	18.289	-1881.036	-22.812	-34402.944230	2228086.372579	286-34-24	88-20-22	27.400
合計				倍面積	758.203336	-758.203336			80.725
				面積	379.1016682	379.1016682			



# 面積（座標法）計算書

地番：W34-4

測点名	[1] X(i)	[2] X(i+1)-X(i-1)	[3] Y(i)	[4] Y(i+1)-Y(i-1)	[2]*[3]	[1]*[4]	方向角	夾角	距離
W34-24	-97675.135	-18.029	-1921.599	4.371	34643.708590	-426937.310402	108-24-55	91-11-57	9.513
W34-25	-97678.140	12.208	-1912.573	13.740	-23349.153637	-1342114.628787	17-12-58	88-48-03	15.927
W34-33	-97662.926	18.029	-1907.859	-4.371	-34395.992728	426883.948264	287-12-58	90-00-00	9.511
W34-34	-97660.111	-12.208	-1916.944	-13.740	23402.515775	1341866.912924	197-12-58	90-00-00	15.728
合計				倍面積	301.078000	-301.078000			50.679
				面積	150.5390001	150.5390001			

面積（座標法）計算書

地番：W34-5

測点名	[1] X(i)	[2] X(i+1)-X(i-1)	[3] Y(i)	[4] Y(i+1)-Y(i-1)	[2]*[3]	[1]*[4]	方向角	夾角	距離
W34-23	-97672.512	-17.480	-1929.475	3.272	33726.644002	-319605.342897	108-24-55	91-11-57	8.301
W34-24	-97675.135	12.401	-1921.599	12.531	-23829.828914	-1223972.846139	17-12-58	88-48-03	15.728
W34-34	-97660.111	17.480	-1916.944	-3.272	-33507.604860	319564.764040	287-12-58	90-00-00	8.299
W34-35	-97657.655	-12.401	-1924.871	-12.531	23870.407771	1223753.806997	197-12-58	90-00-00	15.554
合計				倍面積	259.617998	-259.617998			47.882
				面積	129.8089993	129.8089993			

# 面積（座標法）計算書

地番：W34-6

測点名	[1] X(i)	[2] X(i+1)-X(i-1)	[3] Y(i)	[4] Y(i+1)-Y(i-1)	[2]*[3]	[1]*[4]	方向角	夾角	距離
W34-35	-97657.655	21.736	-1924.871	-17.596	-41839.597599	1718415.298562	287-12-58	90-00-00	23.241
W34-22	-97650.776	-5.674	-1947.071	-25.656	11047.447660	2505301.466738	195-23-31	88-10-33	13.020
W34-4	-97663.329	-15.202	-1950.527	-2.029	29652.281176	198119.321064	151-41-28	136-17-57	3.009
W34-5	-97665.978	-9.184	-1949.100	21.052	17899.613767	-2056065.111975	108-24-55	136-43-27	20.684
W34-23	-97672.512	8.323	-1929.475	24.229	-16059.575249	-2366471.144144	17-12-58	88-48-03	15.554
合計				倍面積	700.169754	-700.169754			75.508
				面積	350.0848772	350.0848772			

# 面積（座標法）計算書

地番：W34-8-1

測点名	[1] X(i)	[2] X(i+1)-X(i-1)	[3] Y(i)	[4] Y(i+1)-Y(i-1)	[2]*[3]	[1]*[4]	方向角	夾角	距離
W34-32	-97648.261	-16.466	-1903.315	-6.449	31339.832506	629769.637596	197-12-58	90-38-35	17.623
W34-39	-97665.094	-17.204	-1908.530	-3.984	32834.204159	389055.465166	106-45-04	89-32-06	1.287
W34-38	-97665.465	16.466	-1907.298	6.449	-31405.425619	-629880.592014	17-12-58	90-27-54	17.627
W34-31	-97648.628	17.204	-1902.081	3.984	-32723.249741	-388989.872053	286-34-23	89-21-25	1.287
合計				倍面積	45.361305	-45.361305			37.824
				面積	22.6806529	22.6806529			

面積（座標法）計算書

地番：W34-8-2

測点名	[1] X(i)	[2] X(i+1)-X(i-1)	[3] Y(i)	[4] Y(i+1)-Y(i-1)	[2]*[3]	[1]*[4]	方向角	夾角	距離
W34-39	-97665.094	-12.675	-1908.530	-5.275	24191.283007	515165.827025	197-12-58	90-27-54	13.658
W34-25	-97678.140	-13.453	-1912.573	-2.821	25729.590966	275576.062260	108-24-55	91-11-57	1.287
W34-26	-97678.547	12.675	-1911.352	5.275	-24227.043534	-515236.788485	17-12-58	88-48-03	13.696
W34-38	-97665.465	13.453	-1907.298	2.821	-25658.629506	-275540.301733	286-45-04	89-32-06	1.287
合計				倍面積	35.200932	-35.200932			29.928
				面積	17.6004663	17.6004663			