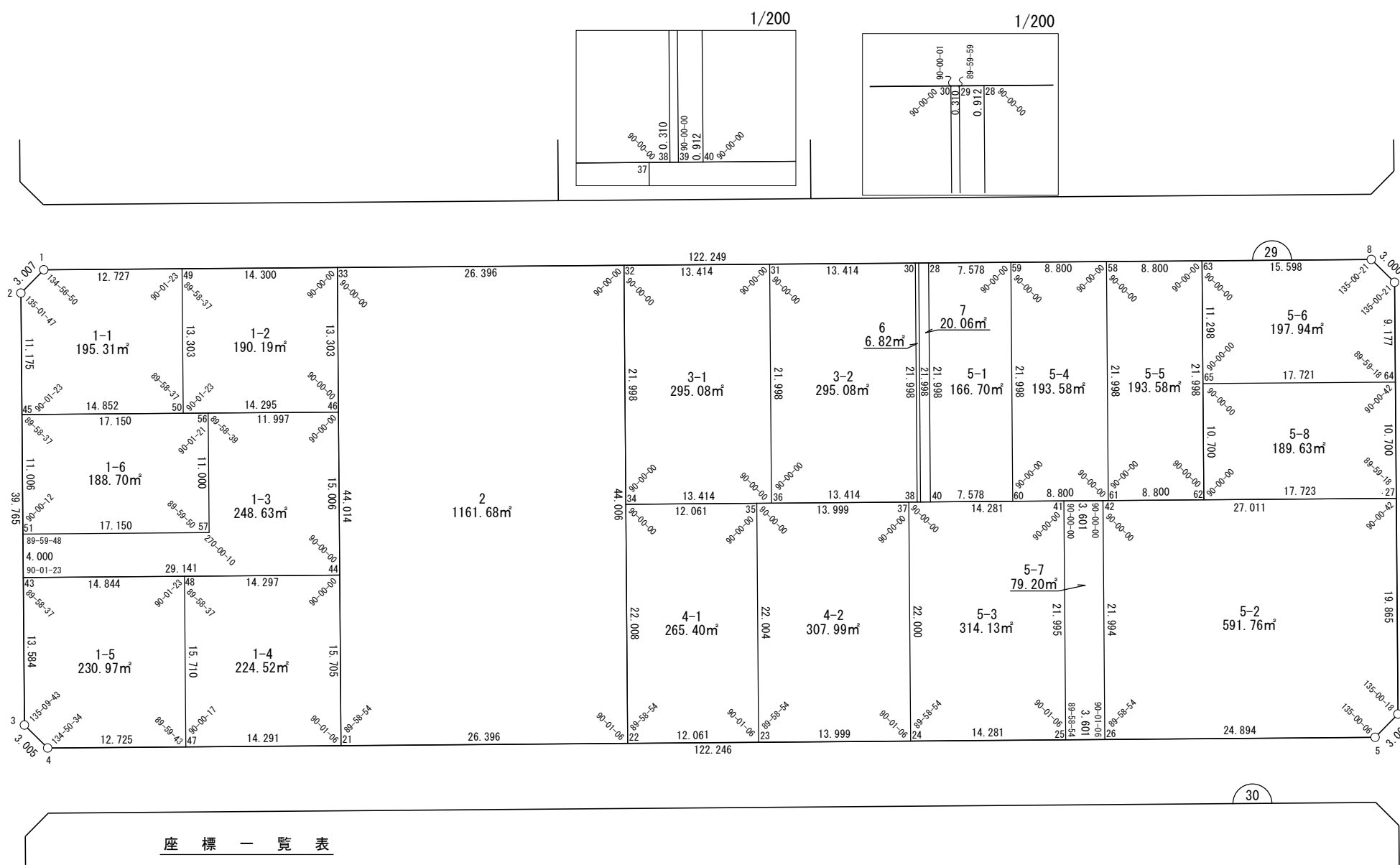


世界測地系

面積一覧表

地番名	地積
W29-1-1	195.31㎡
W29-1-2	190.19㎡
W29-1-3	248.63㎡
W29-1-4	224.52㎡
W29-1-5	230.97㎡
W29-1-6	188.70㎡
W29-2	1161.68㎡
W29-3-1	295.08㎡
W29-3-2	295.08㎡
W29-4-1	265.40㎡
W29-4-2	307.99㎡
W29-5-1	166.70㎡
W29-5-2	591.76㎡
W29-5-3	314.13㎡
W29-5-4	193.58㎡
W29-5-5	193.58㎡
W29-5-6	197.94㎡
W29-5-7	79.20㎡
W29-5-8	189.63㎡
W29-6	6.82㎡
W29-7	20.06㎡
合計	5556.95㎡



座 標 一 覧 表

測 点 名	X 座 標	Y 座 標	測 点 名	X 座 標	Y 座 標	測 点 名	X 座 標	Y 座 標	測 点 名	X 座 標	Y 座 標
W29-1	-97611.288	-1795.233	W29-28	-97634.503	-1717.137	W29-43	-97637.821	-1805.325	W29-62	-97662.763	-1699.271
W29-2	-97612.722	-1797.875	W29-29	-97634.243	-1718.011	W29-44	-97646.124	-1777.393	W29-63	-97641.677	-1693.002
W29-3	-97650.843	-1809.191	W29-30	-97634.155	-1718.308	W29-45	-97623.435	-1801.055	W29-64	-97657.556	-1679.235
W29-4	-97653.489	-1807.766	W29-31	-97630.332	-1731.166	W29-46	-97631.740	-1773.117	W29-65	-97652.506	-1696.222
W29-5	-97688.285	-1690.576	W29-32	-97626.510	-1744.025	W29-47	-97657.111	-1795.567			
W29-6	-97686.855	-1687.939	W29-33	-97618.989	-1769.326	W29-48	-97642.050	-1791.097			
W29-7	-97648.759	-1676.622	W29-34	-97647.596	-1750.293	W29-49	-97614.914	-1783.033			
W29-8	-97646.122	-1678.051	W29-35	-97651.033	-1738.732	W29-50	-97627.667	-1786.819			
W29-21	-97661.178	-1781.868	W29-36	-97651.418	-1737.435	W29-51	-97633.986	-1804.187			
W29-22	-97668.692	-1756.564	W29-37	-97655.021	-1725.314	W29-56	-97628.321	-1784.616			
W29-23	-97672.125	-1745.002	W29-38	-97655.241	-1724.576	W29-57	-97638.867	-1787.747			
W29-24	-97676.109	-1731.582	W29-39	-97655.329	-1724.279	W29-58	-97639.170	-1701.438			
W29-25	-97680.174	-1717.893	W29-40	-97655.589	-1723.405	W29-59	-97636.662	-1709.873			
W29-26	-97681.199	-1714.441	W29-41	-97659.090	-1711.625	W29-60	-97657.748	-1716.141			
W29-27	-97667.813	-1682.282	W29-42	-97660.117	-1708.174	W29-61	-97660.256	-1707.706			

# 面積（座標法）計算書

地 番： W29-1-1

測点名	[1] X(i)	[2] X(i+1)-X(i-1)	[3] Y(i)	[4] Y(i+1)-Y(i-1)	[2]*[3]	[1]*[4]	方向角	夾 角	距 離
W29-49	-97614.914	16.379	-1783.033	-8.414	-29204.750716	821335.539655	286-33-20	90-01-23	12.727
W29-1	-97611.288	2.192	-1795.233	-14.842	-3935.062944	1448733.113887	241-30-10	134-56-50	3.007
W29-2	-97612.722	-12.147	-1797.875	-5.822	21839.289043	568328.597418	196-31-57	135-01-47	11.175
W29-45	-97623.435	-14.945	-1801.055	11.056	26916.258335	-1079367.290729	106-33-20	90-01-23	14.852
W29-50	-97627.667	8.521	-1786.819	18.022	-15225.111117	-1759420.582832	16-31-57	89-58-37	13.303
合計				倍面積	390.622599	-390.622599			55.064
				面 積	195.3113000	195.3113000			

面積（座標法）計算書

地番：W29-1-2

測点名	[1] X(i)	[2] X(i+1)-X(i-1)	[3] Y(i)	[4] Y(i+1)-Y(i-1)	[2]*[3]	[1]*[4]	方向角	夾角	距離
W29-50	-97627.667	-16.826	-1786.819	9.917	30064.812319	-968126.667442	106-33-20	90-01-23	14.295
W29-46	-97631.740	8.678	-1773.117	17.492	-15387.338311	-1707819.127498	16-33-20	90-00-00	13.303
W29-33	-97618.989	16.826	-1769.326	-9.917	-29770.486167	968040.610593	286-33-20	90-00-00	14.300
W29-49	-97614.914	-8.678	-1783.033	-17.492	15473.395160	1707524.801346	196-31-57	89-58-37	13.303
合計				倍面積	380.383000	-380.383000			55.201
				面積	190.1915003	190.1915003			

# 面積（座標法）計算書

地 番： W29-1-3

測点名	[1] X(i)	[2] X(i+1)-X(i-1)	[3] Y(i)	[4] Y(i+1)-Y(i-1)	[2]*[3]	[1]*[4]	方向角	夾 角	距 離
W29-51	-97633.986	1.046	-1804.187	-17.578	-1887.880806	1716255.580237	196-31-57	89-59-48	4.000
W29-43	-97637.821	-12.138	-1805.325	26.794	21913.076877	-2616134.987759	106-33-20	90-01-23	29.141
W29-44	-97646.124	6.081	-1777.393	32.208	-10807.752499	-3145026.768768	16-33-20	90-00-00	15.006
W29-46	-97631.740	17.803	-1773.117	-7.224	-31565.927333	705263.342785	286-33-20	90-00-00	11.997
W29-56	-97628.321	-7.127	-1784.616	-14.630	12719.079935	1428297.370934	196-31-59	89-58-39	11.000
W29-57	-97638.867	-5.664	-1787.747	-19.571	10126.668052	1910848.198343	286-32-09	270-00-10	17.150
合計				倍面積	497.264226	-497.264226			88.294
				面 積	248.6321134	248.6321134			

# 面積（座標法）計算書

地番：W29-1-4

測点名	[1] X(i)	[2] X(i+1)-X(i-1)	[3] Y(i)	[4] Y(i+1)-Y(i-1)	[2]*[3]	[1]*[4]	方向角	夾角	距離
W29-47	-97657.111	-19.128	-1795.567	9.229	34345.872619	-901278.378752	106-32-14	90-00-17	14.291
W29-21	-97661.178	10.987	-1781.868	18.175	-19576.855844	-1774951.796864	16-33-20	90-01-06	15.705
W29-44	-97646.124	19.128	-1777.393	-9.229	-33998.226421	901176.982350	286-33-20	90-00-00	14.297
W29-48	-97642.050	-10.987	-1791.097	-18.175	19678.252246	1774604.150666	196-31-57	89-58-37	15.710
合計				倍面積	449.042599	-449.042599			60.003
				面積	224.5213000	224.5213000			

# 面積（座標法）計算書

地番：W29-1-5

測点名	[1] X(i)	[2] X(i+1)-X(i-1)	[3] Y(i)	[4] Y(i+1)-Y(i-1)	[2]*[3]	[1]*[4]	方向角	夾角	距離
W29-48	-97642.050	19.290	-1791.097	-9.758	-34550.426319	952784.280730	286-33-20	90-01-23	14.844
W29-43	-97637.821	-8.793	-1805.325	-18.094	15873.497491	1766635.365367	196-31-57	89-58-37	13.584
W29-3	-97650.843	-15.668	-1809.191	-2.440	28346.679961	238303.870457	151-41-40	135-09-43	3.005
W29-4	-97653.489	-6.268	-1807.766	13.623	11330.873810	-1330365.913010	106-32-14	134-50-34	12.725
W29-47	-97657.111	11.439	-1795.567	16.669	-20538.682343	-1627819.546145	16-31-57	89-59-43	15.710
合計				倍面積	461.942600	-461.942600			59.868
				面積	230.9713000	230.9713000			

# 面積（座標法）計算書

地番：W29-1-6

測点名	[1] X(i)	[2] X(i+1)-X(i-1)	[3] Y(i)	[4] Y(i+1)-Y(i-1)	[2]*[3]	[1]*[4]	方向角	夾角	距離
W29-45	-97623.435	-5.664	-1801.055	-19.571	10202.052813	1910546.182131	196-31-57	89-58-37	11.006
W29-51	-97633.986	-15.432	-1804.187	13.308	27842.506709	-1299343.554741	106-32-09	90-00-12	17.150
W29-57	-97638.867	5.664	-1787.747	19.571	-10126.668052	-1910848.198343	16-31-59	89-59-50	11.000
W29-56	-97628.321	15.432	-1784.616	-13.308	-27540.490497	1299268.169980	286-33-20	90-01-21	17.150
合計				倍面積	377.400973	-377.400973			56.306
				面積	188.7004866	188.7004866			

# 面積（座標法）計算書

地番：W29-2

測点名	[1] X(i)	[2] X(i+1)-X(i-1)	[3] Y(i)	[4] Y(i+1)-Y(i-1)	[2]*[3]	[1]*[4]	方向角	夾角	距離
W29-32	-97626.510	49.703	-1744.025	-12.762	-86683.257865	1245956.449652	286-33-20	90-00-00	26.396
W29-33	-97618.989	-34.668	-1769.326	-37.843	61339.639538	3694217.001196	196-33-20	90-00-00	44.014
W29-21	-97661.178	-49.703	-1781.868	12.762	88564.179585	-1246398.903930	106-32-14	89-58-54	26.396
W29-22	-97668.692	34.668	-1756.564	37.843	-60897.185260	-3696097.922916	16-33-20	90-01-06	44.006
合計				倍面積	2323.375998	-2323.375998			140.812
				面積	1161.6879991	1161.6879991			



# 面積（座標法）計算書

地 番： W29-3-1

測点名	[1] X(i)	[2] X(i+1)-X(i-1)	[3] Y(i)	[4] Y(i+1)-Y(i-1)	[2]*[3]	[1]*[4]	方向角	夾 角	距 離
W29-31	-97630.332	24.908	-1731.166	-6.590	-43120.297637	643380.706948	286-33-20	90-00-00	13.414
W29-32	-97626.510	-17.264	-1744.025	-19.126	30108.276385	1867228.431557	196-33-20	90-00-00	21.998
W29-34	-97647.596	-24.908	-1750.293	6.590	43596.698570	-643494.474014	106-33-20	90-00-00	13.414
W29-36	-97651.418	17.264	-1737.435	19.126	-29994.509319	-1867704.832490	16-33-20	90-00-00	21.998
合計				倍面積	590.167999	-590.167999			70.824
				面 積	295.0839996	295.0839996			

# 面積（座標法）計算書

地番：W29-3-2

測点名	[1] X(i)	[2] X(i+1)-X(i-1)	[3] Y(i)	[4] Y(i+1)-Y(i-1)	[2]*[3]	[1]*[4]	方向角	夾角	距離
W29-30	-97634.155	24.908	-1718.308	-6.590	-42800.046029	643410.152570	286-33-20	90-00-00	13.414
W29-31	-97630.332	-17.264	-1731.166	-19.126	29886.275703	1867305.794062	196-33-20	90-00-00	21.998
W29-36	-97651.418	-24.908	-1737.435	6.590	43276.448295	-643523.920303	106-33-20	90-00-00	13.414
W29-38	-97655.241	17.264	-1724.576	19.126	-29772.507970	-1867782.196328	16-33-20	90-00-00	21.998
合計				倍面積	590.169998	-590.169998			70.824
				面積	295.0849995	295.0849995			

面積（座標法）計算書

地番：W29-4-1

測点名	[1] X(i)	[2] X(i+1)-X(i-1)	[3] Y(i)	[4] Y(i+1)-Y(i-1)	[2]*[3]	[1]*[4]	方向角	夾角	距離
W29-35	-97651.033	24.529	-1738.732	-5.291	-42648.750685	516640.833551	286-33-20	90-00-00	12.061
W29-34	-97647.596	-17.659	-1750.293	-17.832	30908.660005	1741220.800967	196-33-20	90-00-00	22.008
W29-22	-97668.692	-24.529	-1756.564	5.291	43086.137752	-516734.262482	106-32-14	89-58-54	12.061
W29-23	-97672.125	17.659	-1745.002	17.832	-30815.231074	-1741658.188034	16-33-20	90-01-06	22.004
合計				倍面積	530.815997	-530.815997			68.134
				面積	265.4079990	265.4079990			

# 面積（座標法）計算書

地番：W29-4-2

測点名	[1] X(i)	[2] X(i+1)-X(i-1)	[3] Y(i)	[4] Y(i+1)-Y(i-1)	[2]*[3]	[1]*[4]	方向角	夾角	距離
W29-37	-97655.021	25.077	-1725.314	-7.150	-43265.037697	698193.959711	286-33-20	90-00-00	13.999
W29-35	-97651.033	-17.103	-1738.732	-19.688	29737.992434	1922577.228507	196-33-20	90-00-00	22.004
W29-23	-97672.125	-25.077	-1745.002	7.150	43758.752270	-698316.241135	106-32-14	89-58-54	13.999
W29-24	-97676.109	17.103	-1731.582	19.688	-29615.711010	-1923070.943080	16-33-20	90-01-06	22.000
合計				倍面積	615.995996	-615.995996			72.002
				面積	307.9979983	307.9979983			

面積（座標法）計算書

地番：W29-5-1

測点名	[1] X(i)	[2] X(i+1)-X(i-1)	[3] Y(i)	[4] Y(i+1)-Y(i-1)	[2]*[3]	[1]*[4]	方向角	夾角	距離
W29-28	-97634.503	-18.927	-1717.137	-13.532	32499.616817	1321197.573388	196-33-20	90-00-00	21.998
W29-40	-97655.589	-23.245	-1723.405	0.996	40061.024689	-97245.456284	106-33-20	90-00-00	7.578
W29-60	-97657.748	18.927	-1716.141	13.532	-32480.769672	-1321512.130256	16-33-20	90-00-00	21.998
W29-59	-97636.662	23.245	-1709.873	-0.996	-39746.467821	97226.609139	286-33-20	90-00-00	7.578
合計				倍面積	333.404012	-333.404012			59.152
				面積	166.7020064	166.7020064			

# 面積（座標法）計算書

地番：W29-5-2

測点名	[1] X(i)	[2] X(i+1)-X(i-1)	[3] Y(i)	[4] Y(i+1)-Y(i-1)	[2]*[3]	[1]*[4]	方向角	夾角	距離
W29-26	-97681.199	-28.168	-1714.441	17.598	48292.911823	-1718950.173441	106-32-14	89-58-54	24.894
W29-5	-97688.285	-5.656	-1690.576	26.502	9562.465806	-2588924.072824	61-32-20	135-00-06	3.000
W29-6	-97686.855	20.472	-1687.939	8.294	-34555.030730	-810184.377656	16-32-38	135-00-18	19.865
W29-27	-97667.813	26.739	-1682.282	-20.235	-44982.091649	1976289.564085	286-33-20	90-00-42	27.011
W29-42	-97660.117	-13.386	-1708.174	-32.158	22865.280749	3140585.523836	196-33-20	90-00-00	21.994
合計				倍面積	1183.536000	-1183.536000			96.764
				面積	591.7680000	591.7680000			

# 面積（座標法）計算書

地番：W29-5-3

測点名	[1] X(i)	[2] X(i+1)-X(i-1)	[3] Y(i)	[4] Y(i+1)-Y(i-1)	[2]*[3]	[1]*[4]	方向角	夾角	距離
W29-41	-97659.090	25.153	-1711.625	-7.421	-43051.901940	724748.374850	286-33-20	90-00-00	14.281
W29-37	-97655.021	-17.019	-1725.314	-19.957	29362.526779	1948930.967521	196-33-20	90-00-00	22.000
W29-24	-97676.109	-25.153	-1731.582	7.421	43553.880943	-724874.673848	106-32-14	89-58-54	14.281
W29-25	-97680.174	17.019	-1717.893	19.957	-29236.227781	-1949432.946525	16-33-20	90-01-06	21.995
合計				倍面積	628.278001	-628.278001			72.557
				面積	314.1390010	314.1390010			

面積（座標法）計算書

地番：W29-5-4

測点名	[1] X(i)	[2] X(i+1)-X(i-1)	[3] Y(i)	[4] Y(i+1)-Y(i-1)	[2]*[3]	[1]*[4]	方向角	夾角	距離
W29-59	-97636.662	-18.578	-1709.873	-14.703	31766.801849	1435584.080254	196-33-20	90-00-00	21.998
W29-60	-97657.748	-23.593	-1716.141	2.167	40489.687841	-211629.588481	106-33-20	90-00-00	8.800
W29-61	-97660.256	18.578	-1707.706	14.703	-31726.541331	-1435930.982550	16-33-20	90-00-00	21.998
W29-58	-97639.170	23.593	-1701.438	-2.167	-40142.785545	211589.327963	286-33-20	90-00-00	8.800
合計				倍面積	387.162814	-387.162814			61.596
				面積	193.5814071	193.5814071			



# 面積（座標法）計算書

地番：W29-5-5

測点名	[1] X(i)	[2] X(i+1)-X(i-1)	[3] Y(i)	[4] Y(i+1)-Y(i-1)	[2]*[3]	[1]*[4]	方向角	夾角	距離
W29-58	-97639.170	-18.578	-1701.438	-14.703	31610.089038	1435620.949695	196-33-20	90-00-00	21.998
W29-61	-97660.256	-23.593	-1707.706	2.167	40290.672608	-211635.021461	106-33-20	90-00-00	8.800
W29-62	-97662.763	18.578	-1699.271	14.703	-31569.828520	-1435967.851992	16-33-20	90-00-00	21.998
W29-63	-97641.677	23.593	-1693.002	-2.167	-39943.770311	211594.760943	286-33-20	90-00-00	8.800
合計				倍面積	387.162814	-387.162814			61.596
				面積	193.5814074	193.5814074			

# 面積（座標法）計算書

地 番： W29-5-6

測点名	[1] X(i)	[2] X(i+1)-X(i-1)	[3] Y(i)	[4] Y(i+1)-Y(i-1)	[2]*[3]	[1]*[4]	方向角	夾 角	距 離
W29-63	-97641.677	-6.385	-1693.002	-18.170	10809.488179	1774169.524195	196-33-20	90-00-00	11.298
W29-65	-97652.506	-15.879	-1696.222	13.767	26933.770371	-1344393.527164	106-33-20	90-00-00	17.721
W29-64	-97657.556	3.747	-1679.235	19.599	-6292.508053	-1914022.067591	16-32-38	89-59-18	9.177
W29-7	-97648.759	11.434	-1676.622	1.184	-19170.916685	-115608.756264	331-32-59	135-00-21	3.000
W29-8	-97646.122	7.082	-1678.051	-16.380	-11883.950913	1599458.943926	286-33-20	135-00-21	15.598
合計				倍面積	395.882898	-395.882898			56.794
				面 積	197.9414491	197.9414491			

# 面積（座標法）計算書

地番：W29-5-7

測点名	[1] X(i)	[2] X(i+1)-X(i-1)	[3] Y(i)	[4] Y(i+1)-Y(i-1)	[2]*[3]	[1]*[4]	方向角	夾角	距離
W29-41	-97659.090	-20.057	-1711.625	-9.719	34330.787550	949156.200773	196-33-20	90-00-00	21.995
W29-25	-97680.174	-22.108	-1717.893	-2.815	37979.957982	275009.484670	106-32-14	89-58-54	3.601
W29-26	-97681.199	20.057	-1714.441	9.719	-34387.257362	-949371.074584	16-33-20	90-01-06	21.994
W29-42	-97660.117	22.108	-1708.174	2.815	-37765.084170	-274953.014857	286-33-20	90-00-00	3.601
合計				倍面積	158.403999	-158.403999			51.191
				面積	79.2019996	79.2019996			

面積（座標法）計算書

地番：W29-5-8

測点名	[1] X(i)	[2] X(i+1)-X(i-1)	[3] Y(i)	[4] Y(i+1)-Y(i-1)	[2]*[3]	[1]*[4]	方向角	夾角	距離
W29-65	-97652.506	-5.207	-1696.222	-20.035	8832.682073	1956492.935432	196-33-20	90-00-00	10.700
W29-62	-97662.763	-15.307	-1699.271	13.939	26010.343662	-1361356.764632	106-33-20	90-00-00	17.723
W29-27	-97667.813	5.207	-1682.282	20.035	-8760.096059	-1956799.610475	16-32-38	89-59-18	10.700
W29-64	-97657.556	15.307	-1679.235	-13.939	-25703.668619	1361284.178618	286-33-20	90-00-42	17.721
合計				倍面積	379.261057	-379.261057			56.844
				面積	189.6305288	189.6305288			

面積（座標法）計算書

地番：W29-6

測点名	[1] X(i)	[2] X(i+1)-X(i-1)	[3] Y(i)	[4] Y(i+1)-Y(i-1)	[2]*[3]	[1]*[4]	方向角	夾角	距離
W29-29	-97634.243	21.174	-1718.011	5.971	-36377.739500	-582957.476574	286-33-19	89-59-59	0.310
W29-30	-97634.155	-20.998	-1718.308	-6.565	36080.308168	641011.798854	196-33-20	90-00-01	21.998
W29-38	-97655.241	-21.174	-1724.576	-5.971	36516.758455	583082.849527	106-33-20	90-00-00	0.310
W29-39	-97655.329	20.998	-1724.279	6.565	-36205.681121	-641150.817808	16-33-20	90-00-00	21.998
合計				倍面積	13.646000	-13.646000			44.616
				面積	6.8230003	6.8230003			

面積（座標法）計算書

地番：W29-7

測点名	[1] X(i)	[2] X(i+1)-X(i-1)	[3] Y(i)	[4] Y(i+1)-Y(i-1)	[2]*[3]	[1]*[4]	方向角	夾角	距離
W29-28	-97634.503	21.346	-1717.137	5.394	-36653.717673	-526631.252493	286-33-20	90-00-00	0.912
W29-29	-97634.243	-20.826	-1718.011	-7.142	35779.426185	697340.004953	196-33-20	90-00-00	21.998
W29-39	-97655.329	-21.346	-1724.279	-5.394	36806.177547	526743.586366	106-33-20	90-00-00	0.912
W29-40	-97655.589	20.826	-1723.405	7.142	-35891.760059	-697492.464827	16-33-20	90-00-00	21.998
合計				倍面積	40.125999	-40.125999			45.820
				面積	20.0629999	20.0629999			