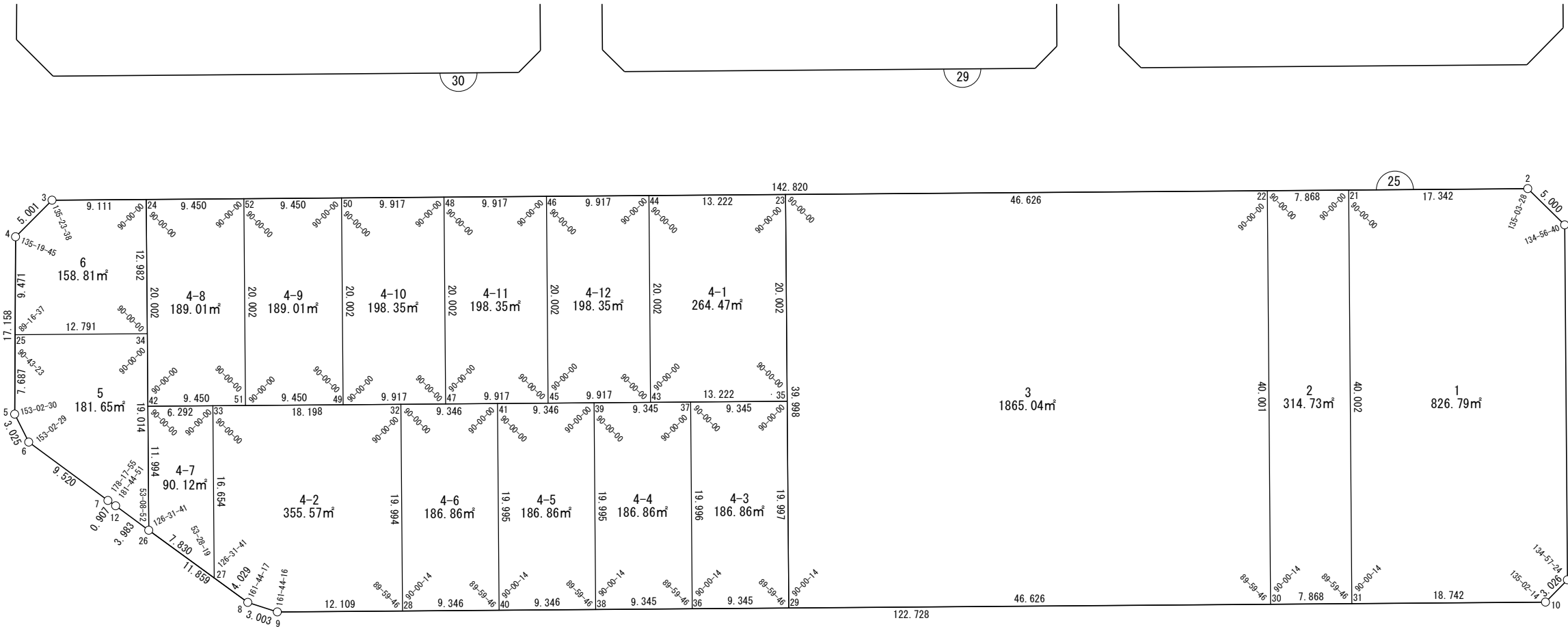


面積一覧表

地番名	面積	地番名	面積
W25-1	826.79 m <sup>2</sup>	W25-4-7	90.12 m <sup>2</sup>
W25-2	314.73 m <sup>2</sup>	W25-4-8	189.01 m <sup>2</sup>
W25-3	1865.04 m <sup>2</sup>	W25-4-9	189.01 m <sup>2</sup>
W25-4-1	264.47 m <sup>2</sup>	W25-4-10	198.35 m <sup>2</sup>
W25-4-2	355.57 m <sup>2</sup>	W25-4-11	198.35 m <sup>2</sup>
W25-4-3	186.86 m <sup>2</sup>	W25-4-12	198.35 m <sup>2</sup>
W25-4-4	186.86 m <sup>2</sup>	W25-5	181.65 m <sup>2</sup>
W25-4-5	186.86 m <sup>2</sup>	W25-6	158.81 m <sup>2</sup>
W25-4-6	186.86 m <sup>2</sup>	合計	5777.69 m <sup>2</sup>



世界測地系



座 標 一 覧 表

測 点 名	X 座 標	Y 座 標
W25-1	-97604.180	-1647.155
W25-2	-97606.566	-1651.549
W25-3	-97743.467	-1692.238
W25-4	-97747.880	-1689.886
W25-5	-97752.976	-1673.502
W25-6	-97752.467	-1670.520
W25-7	-97746.785	-1662.882
W25-8	-97736.725	-1649.492
W25-9	-97734.260	-1647.777
W25-10	-97616.621	-1612.805
W25-11	-97613.960	-1614.244
W25-12	-97746.223	-1662.171
W25-21	-97623.189	-1656.489
W25-22	-97630.731	-1658.731
W25-23	-97675.425	-1672.015
W25-24	-97734.733	-1689.642
W25-25	-97750.693	-1680.843

測 点 名	X 座 標	Y 座 標
W25-26	-97743.849	-1658.973
W25-27	-97739.145	-1652.713
W25-28	-97722.653	-1644.327
W25-29	-97686.821	-1633.674
W25-30	-97642.128	-1620.387
W25-31	-97634.586	-1618.145
W25-32	-97716.957	-1663.492
W25-33	-97734.401	-1668.677
W25-34	-97738.432	-1677.199
W25-35	-97681.124	-1652.842
W25-36	-97695.778	-1636.337
W25-37	-97690.082	-1655.505
W25-38	-97704.736	-1639.000
W25-39	-97699.040	-1658.167
W25-40	-97713.695	-1641.664
W25-41	-97707.998	-1660.830

測 点 名	X 座 標	Y 座 標
W25-42	-97740.432	-1670.470
W25-43	-97693.798	-1656.609
W25-44	-97688.100	-1675.782
W25-45	-97703.304	-1659.434
W25-46	-97697.605	-1678.607
W25-47	-97712.810	-1662.260
W25-48	-97707.111	-1681.432
W25-49	-97722.315	-1665.085
W25-50	-97716.617	-1684.258
W25-51	-97731.374	-1667.777
W25-52	-97725.675	-1686.950

豊田浄水特定土地区画整理組合

株式会社 オオバ 名古屋支店

# 面積（座標法）計算書

地番：W25-1

測点名	[1] X(i)	[2] X(i+1)-X(i-1)	[3] Y(i)	[4] Y(i+1)-Y(i-1)	[2]*[3]	[1]*[4]	方向角	夾角	距離
W25-31	-97634.586	6.568	-1618.145	43.685	-10628.322240	-4265145.732283	16-33-24	90-00-14	18.742
W25-10	-97616.621	20.626	-1612.805	3.901	-33265.729349	-380842.363850	331-35-38	135-02-14	3.026
W25-11	-97613.960	12.441	-1614.244	-34.350	-20083.545219	3353046.058238	286-33-02	134-57-24	34.333
W25-1	-97604.180	7.394	-1647.155	-37.305	-12179.041105	3641092.666287	241-29-42	134-56-40	5.000
W25-2	-97606.566	-19.010	-1651.549	-9.335	31395.391770	911129.610359	196-33-10	135-03-28	17.342
W25-21	-97623.189	-28.020	-1656.489	33.403	46414.834140	-3260933.826747	106-33-10	90-00-00	40.002
合計				倍面積	1653.587995	-1653.587995			118.445
				面積	826.7939980	826.7939980			

面積（座標法）計算書

地番：W25-2

測点名	[1] X(i)	[2] X(i+1)-X(i-1)	[3] Y(i)	[4] Y(i+1)-Y(i-1)	[2]*[3]	[1]*[4]	方向角	夾角	距離
W25-30	-97642.128	-3.855	-1620.387	40.586	6245.903199	-3962870.739225	16-33-24	90-00-14	7.868
W25-31	-97634.586	18.938	-1618.145	-36.102	-30645.008632	3524799.969138	286-33-10	89-59-46	40.002
W25-21	-97623.189	3.855	-1656.489	-40.586	-6385.060874	3962102.113547	196-33-10	90-00-00	7.868
W25-22	-97630.731	-18.938	-1658.731	36.102	31413.634311	-3524660.811463	106-33-10	90-00-00	40.001
合計				倍面積	629.468003	-629.468003			95.739
				面積	314.7340015	314.7340015			

# 面積（座標法）計算書

地番：W25-3

測点名	[1] X(i)	[2] X(i+1)-X(i-1)	[3] Y(i)	[4] Y(i+1)-Y(i-1)	[2]*[3]	[1]*[4]	方向角	夾角	距離
W25-29	-97686.821	33.298	-1633.674	51.627	-54397.480930	-5043318.972699	16-33-24	90-00-14	46.626
W25-30	-97642.128	56.090	-1620.387	-25.057	-90886.788861	2446597.446691	286-33-10	89-59-46	40.001
W25-22	-97630.731	-33.298	-1658.731	-51.627	55231.812374	5040423.214145	196-33-10	90-00-00	46.626
W25-23	-97675.425	-56.090	-1672.015	25.057	93782.547415	-2447431.778135	106-33-10	90-00-00	39.998
合計				倍面積	3730.089997	-3730.089997			173.251
				面積	1865.0449988	1865.0449988			

# 面積（座標法）計算書

地番：W25-4-1

測点名	[1] X(i)	[2] X(i+1)-X(i-1)	[3] Y(i)	[4] Y(i+1)-Y(i-1)	[2]*[3]	[1]*[4]	方向角	夾角	距離
W25-43	-97693.798	6.976	-1656.609	22.940	-11556.393611	-2241080.394748	16-33-10	90-00-00	13.222
W25-35	-97681.124	18.373	-1652.842	-15.406	-30367.526742	1504847.510364	286-33-10	90-00-00	20.002
W25-23	-97675.425	-6.976	-1672.015	-22.940	11663.862835	2240658.922972	196-33-10	90-00-00	13.222
W25-44	-97688.100	-18.373	-1675.782	15.406	30788.998518	-1504954.979587	106-33-10	90-00-00	20.002
合計				倍面積	528.941000	-528.941000			66.448
				面積	264.4705000	264.4705000			

# 面積（座標法）計算書

地 番： W25-4-2

測点名	[1] X(i)	[2] X(i+1)-X(i-1)	[3] Y(i)	[4] Y(i+1)-Y(i-1)	[2]*[3]	[1]*[4]	方向角	夾 角	距 離
W25-8	-97736.725	4.885	-1649.492	4.936	-8058.208916	-482388.814126	34-49-08	161-44-17	3.003
W25-9	-97734.260	14.072	-1647.777	5.165	-23187.714579	-504811.194783	16-33-24	161-44-16	12.109
W25-28	-97722.653	17.303	-1644.327	-15.715	-28452.302102	1535700.392254	286-33-10	89-59-46	19.994
W25-32	-97716.957	-11.747	-1663.492	-24.350	19541.861599	2379420.571314	196-33-10	90-00-00	18.198
W25-33	-97734.401	-22.189	-1668.677	10.779	37025.572743	-1053507.662021	106-33-10	90-00-00	16.654
W25-27	-97739.145	-2.325	-1652.713	19.185	3841.936873	-1875124.438254	53-04-51	126-31-41	4.029
合計				倍面積	711.145616	-711.145616			73.987
				面 積	355.5728085	355.5728085			

面積（座標法）計算書

地番：W25-4-3

測点名	[1] X(i)	[2] X(i+1)-X(i-1)	[3] Y(i)	[4] Y(i+1)-Y(i-1)	[2]*[3]	[1]*[4]	方向角	夾角	距離
W25-36	-97695.778	3.261	-1636.337	21.830	-5335.805287	-2132727.565804	16-33-24	90-00-14	9.345
W25-29	-97686.821	14.655	-1633.674	-16.505	-23941.017271	1612305.490592	286-33-10	89-59-46	19.997
W25-35	-97681.124	-3.261	-1652.842	-21.830	5389.624645	2132407.649243	196-33-10	90-00-00	9.345
W25-37	-97690.082	-14.655	-1655.505	16.505	24260.933833	-1612359.309950	106-33-10	90-00-00	19.996
合計				倍面積	373.735919	-373.735919			58.683
				面積	186.8679595	186.8679595			

面積（座標法）計算書

地番：W25-4-4

測点名	[1] X(i)	[2] X(i+1)-X(i-1)	[3] Y(i)	[4] Y(i+1)-Y(i-1)	[2]*[3]	[1]*[4]	方向角	夾角	距離
W25-38	-97704.736	3.261	-1639.000	21.830	-5345.224170	-2132873.777432	16-33-24	90-00-14	9.345
W25-36	-97695.778	14.655	-1636.337	-16.504	-23980.206313	1612388.076765	286-33-10	89-59-46	19.996
W25-37	-97690.082	-3.261	-1655.505	-21.830	5399.048751	2132553.866094	196-33-10	90-00-00	9.345
W25-39	-97699.040	-14.655	-1658.167	16.504	24300.117651	-1612441.901345	106-33-10	90-00-00	19.995
合計				倍面積	373.735919	-373.735919			58.681
				面積	186.8679596	186.8679596			



# 面積（座標法）計算書

地番：W25-4-5

測点名	[1] X(i)	[2] X(i+1)-X(i-1)	[3] Y(i)	[4] Y(i+1)-Y(i-1)	[2]*[3]	[1]*[4]	方向角	夾角	距離
W25-40	-97713.695	3.262	-1641.664	21.829	-5354.645742	-2133019.984697	16-33-24	90-00-14	9.346
W25-38	-97704.736	14.655	-1639.000	-16.504	-24019.397124	1612470.652788	286-33-10	89-59-46	19.995
W25-39	-97699.040	-3.262	-1658.167	-21.829	5408.475545	2132700.078581	196-33-10	90-00-00	9.346
W25-41	-97707.998	-14.655	-1660.830	16.504	24339.303240	-1612524.482591	106-33-10	90-00-00	19.995
合計				倍面積	373.735919	-373.735919			58.682
				面積	186.8679596	186.8679596			

面積（座標法）計算書

地番：W25-4-6

測点名	[1] X(i)	[2] X(i+1)-X(i-1)	[3] Y(i)	[4] Y(i+1)-Y(i-1)	[2]*[3]	[1]*[4]	方向角	夾角	距離
W25-32	-97716.957	-14.655	-1663.492	16.503	24378.490590	-1612607.053881	106-33-10	90-00-00	19.994
W25-28	-97722.653	3.262	-1644.327	21.829	-5364.070020	-2133166.187900	16-33-24	90-00-14	9.346
W25-40	-97713.695	14.655	-1641.664	-16.503	-24058.589696	1612553.218856	286-33-10	89-59-46	19.995
W25-41	-97707.998	-3.262	-1660.830	-21.829	5417.905046	2132846.287007	196-33-10	90-00-00	9.346
合計				倍面積	373.735919	-373.735919			58.681
				面積	186.8679596	186.8679596			

# 面積（座標法）計算書

地番：W25-4-7

測点名	[1] X(i)	[2] X(i+1)-X(i-1)	[3] Y(i)	[4] Y(i+1)-Y(i-1)	[2]*[3]	[1]*[4]	方向角	夾角	距離
W25-42	-97740.432	-9.448	-1670.470	9.704	15782.793646	-948468.888163	106-33-10	90-00-00	11.994
W25-26	-97743.849	1.286	-1658.973	17.756	-2134.087256	-1735585.861738	53-04-51	126-31-41	7.830
W25-27	-97739.145	9.448	-1652.713	-9.704	-15615.028401	948456.405085	286-33-10	53-28-19	16.654
W25-33	-97734.401	-1.286	-1668.677	-17.756	2146.570335	1735418.096493	196-33-10	90-00-00	6.292
合計				倍面積	180.248323	-180.248323			42.770
				面積	90.1241616	90.1241616			

面積（座標法）計算書

地番：W25-4-8

測点名	[1] X(i)	[2] X(i+1)-X(i-1)	[3] Y(i)	[4] Y(i+1)-Y(i-1)	[2]*[3]	[1]*[4]	方向角	夾角	距離
W25-52	-97725.675	-3.360	-1686.950	-21.865	5667.735732	2136776.773933	196-33-10	90-00-00	9.450
W25-24	-97734.733	-14.757	-1689.642	16.481	24933.603798	-1610717.979019	106-33-10	90-00-00	20.002
W25-42	-97740.432	3.360	-1670.470	21.865	-5612.365295	-2137099.430688	16-33-10	90-00-00	9.450
W25-51	-97731.374	14.757	-1667.777	-16.481	-24610.947043	1610662.608582	286-33-10	90-00-00	20.002
合計				倍面積	378.027191	-378.027191			58.904
				面積	189.0135959	189.0135959			

面積（座標法）計算書

地番：W25-4-9

測点名	[1] X(i)	[2] X(i+1)-X(i-1)	[3] Y(i)	[4] Y(i+1)-Y(i-1)	[2]*[3]	[1]*[4]	方向角	夾角	距離
W25-51	-97731.374	3.360	-1667.777	21.865	-5603.319888	-2136901.374285	16-33-10	90-00-00	9.450
W25-49	-97722.315	14.757	-1665.085	-16.481	-24571.217898	1610513.327533	286-33-10	90-00-00	20.002
W25-50	-97716.617	-3.360	-1684.258	-21.865	5658.690325	2136578.717530	196-33-10	90-00-00	9.450
W25-52	-97725.675	-14.757	-1686.950	16.481	24893.874652	-1610568.697970	106-33-10	90-00-00	20.002
合計				倍面積	378.027191	-378.027191			58.904
				面積	189.0135959	189.0135959			

# 面積（座標法）計算書

地番：W25-4-10

測点名	[1] X(i)	[2] X(i+1)-X(i-1)	[3] Y(i)	[4] Y(i+1)-Y(i-1)	[2]*[3]	[1]*[4]	方向角	夾角	距離
W25-49	-97722.315	3.807	-1665.085	21.998	-6339.332817	-2149699.699107	16-33-10	90-00-00	9.917
W25-47	-97712.810	15.204	-1662.260	-16.348	-25273.320356	1597361.555226	286-33-10	90-00-00	20.002
W25-48	-97707.111	-3.807	-1681.432	-21.998	6401.571284	2149365.236573	196-33-10	90-00-00	9.917
W25-50	-97716.617	-15.204	-1684.258	16.348	25607.782889	-1597423.793692	106-33-10	90-00-00	20.002
合計				倍面積	396.700999	-396.700999			59.838
				面積	198.3505000	198.3505000			

# 面積（座標法）計算書

地 番： W25-4-11

測点名	[1] X(i)	[2] X(i+1)-X(i-1)	[3] Y(i)	[4] Y(i+1)-Y(i-1)	[2]*[3]	[1]*[4]	方向角	夾 角	距 離
W25-47	-97712.810	3.807	-1662.260	21.998	-6328.576392	-2149490.594892	16-33-10	90-00-00	9.917
W25-45	-97703.304	15.204	-1659.434	-16.348	-25230.364475	1597206.164182	286-33-10	90-00-00	20.002
W25-46	-97697.605	-3.807	-1678.607	-21.998	6390.814858	2149156.132358	196-33-10	90-00-00	9.917
W25-48	-97707.111	-15.204	-1681.432	16.348	25564.827009	-1597268.402648	106-33-10	90-00-00	20.002
合計				倍面積	396.700999	-396.700999			59.838
				面 積	198.3505000	198.3505000			

# 面積（座標法）計算書

地番：W25-4-12

測点名	[1] X(i)	[2] X(i+1)-X(i-1)	[3] Y(i)	[4] Y(i+1)-Y(i-1)	[2]*[3]	[1]*[4]	方向角	夾角	距離
W25-45	-97703.304	3.807	-1659.434	21.998	-6317.819968	-2149281.490676	16-33-10	90-00-00	9.917
W25-43	-97693.798	15.204	-1656.609	-16.348	-25187.408595	1597050.773147	286-33-10	90-00-00	20.002
W25-44	-97688.100	-3.807	-1675.782	-21.998	6380.058434	2148947.028142	196-33-10	90-00-00	9.917
W25-46	-97697.605	-15.204	-1678.607	16.348	25521.871129	-1597113.011613	106-33-10	90-00-00	20.002
合計				倍面積	396.701000	-396.701000			59.838
				面積	198.3505000	198.3505000			



# 面積（座標法）計算書

地番：W25-5

測点名	[1] X(i)	[2] X(i+1)-X(i-1)	[3] Y(i)	[4] Y(i+1)-Y(i-1)	[2]*[3]	[1]*[4]	方向角	夾角	距離
W25-25	-97750.693	-14.544	-1680.843	3.696	24446.299422	-361307.215566	107-16-33	90-43-23	7.687
W25-5	-97752.976	-1.774	-1673.502	10.323	2968.980298	-1009059.002674	80-19-03	153-02-30	3.025
W25-6	-97752.467	6.190	-1670.520	10.621	-10341.130812	-1038215.618368	53-21-32	153-02-29	9.520
W25-7	-97746.785	6.244	-1662.882	8.350	-10382.936589	-816164.320145	51-39-27	178-17-55	0.907
W25-12	-97746.223	2.937	-1662.171	3.909	-4881.307162	-382052.549055	53-24-18	181-44-51	3.983
W25-26	-97743.849	7.791	-1658.973	-15.028	-12925.595844	1468903.199043	286-33-10	53-08-52	19.014
W25-34	-97738.432	-6.844	-1677.199	-21.870	11479.006683	2137532.190770	196-33-10	90-00-00	12.791
合計				倍面積	363.315995	-363.315995			56.927
				面積	181.6579980	181.6579980			

# 面積（座標法）計算書

地番：W25-6

測点名	[1] X(i)	[2] X(i+1)-X(i-1)	[3] Y(i)	[4] Y(i+1)-Y(i-1)	[2]*[3]	[1]*[4]	方向角	夾角	距離
W25-34	-97738.432	15.960	-1677.199	-8.799	-26767.446791	860037.044154	286-33-10	90-00-00	12.982
W25-24	-97734.733	-5.035	-1689.642	-15.039	8507.951413	1469877.005418	196-33-10	90-00-00	9.111
W25-3	-97743.467	-13.147	-1692.238	-0.244	22247.989028	23849.200704	151-56-48	135-23-38	5.001
W25-4	-97747.880	-7.226	-1689.886	11.395	12210.776559	-1113858.649798	107-16-33	135-19-45	9.471
W25-25	-97750.693	9.449	-1680.843	12.688	-15881.642211	-1240222.228477	16-33-10	89-16-37	12.791
合計				倍面積	317.627999	-317.627999			49.356
				面積	158.8139996	158.8139996			