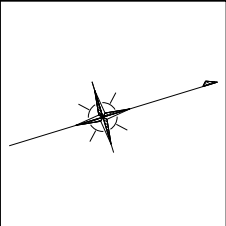
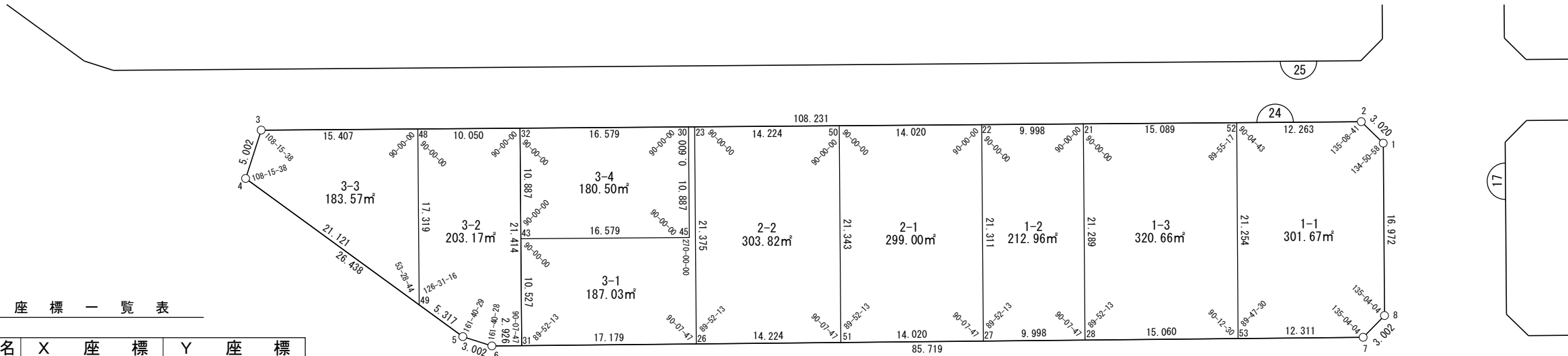


地 番	面 積
W24-1-1	301.67 m ²
W24-1-2	212.96 m ²
W24-1-3	320.66 m ²
W24-2-1	299.00 m ²
W24-2-2	303.82 m ²
W24-3-1	187.03 m ²
W24-3-2	203.17 m ²
W24-3-3	183.57 m ²
W24-3-4	180.50 m ²
合 計	2192.38 m ²



世界測地系



座 標 一 覧 表

測 点 名	X 座 標	Y 座 標
W24-1	-97616.884	-1604.395
W24-2	-97618.329	-1607.046
W24-3	-97722.070	-1637.894
W24-4	-97724.926	-1633.788
W24-5	-97709.045	-1612.651
W24-6	-97706.579	-1610.940
W24-7	-97624.360	-1586.695
W24-8	-97621.723	-1588.127
W24-21	-97644.546	-1614.842
W24-22	-97654.130	-1617.692
W24-23	-97681.203	-1625.742
W24-26	-97687.295	-1605.253
W24-27	-97660.204	-1597.265
W24-28	-97650.614	-1594.437
W24-30	-97681.778	-1625.913
W24-31	-97703.773	-1610.112
W24-32	-97697.669	-1630.638
W24-43	-97700.772	-1620.202
W24-45	-97684.881	-1615.477
W24-48	-97707.303	-1633.503
W24-49	-97712.239	-1616.902
W24-50	-97667.569	-1621.688
W24-51	-97673.652	-1601.230
W24-52	-97630.083	-1610.541
W24-53	-97636.169	-1590.177

株式会社
オオバ
名古屋支店

豊田浄水特定土地区画整理組合

面積（座標法）計算書

地 番： W24-1-1

測点名	[1] X(i)	[2] X(i+1)-X(i-1)	[3] Y(i)	[4] Y(i+1)-Y(i-1)	[2]*[3]	[1]*[4]	方向角	夾 角	距 離
W24-53	-97636.169	5.723	-1590.177	23.847	-9099.816687	-2328299.368849	16-25-48	89-47-30	12.311
W24-7	-97624.360	14.446	-1586.695	2.050	-22921.648270	-200103.004210	331-29-52	135-04-04	3.002
W24-8	-97621.723	7.477	-1588.127	-17.700	-11874.034731	1727878.140232	286-33-56	135-04-04	16.972
W24-1	-97616.884	3.394	-1604.395	-18.919	-5445.275541	1846829.869482	241-24-54	134-50-58	3.020
W24-2	-97618.329	-13.199	-1607.046	-6.147	21211.841024	600055.872880	196-33-35	135-08-41	12.263
W24-52	-97630.083	-17.840	-1610.541	16.869	28732.279548	-1646964.854877	106-38-18	90-04-43	21.254
合計				倍面積	603.345342	-603.345342			68.822
				面 積	301.6726712	301.6726712			

面積（座標法）計算書

地番：W24-1-2

測点名	[1] X(i)	[2] X(i+1)-X(i-1)	[3] Y(i)	[4] Y(i+1)-Y(i-1)	[2]*[3]	[1]*[4]	方向角	夾角	距離
W24-21	-97644.546	-3.516	-1614.842	-23.255	5677.991491	2270751.315245	196-33-35	90-00-00	9.998
W24-22	-97654.130	-15.658	-1617.692	17.578	25329.390240	-1716522.443984	106-33-35	90-00-00	21.311
W24-27	-97660.204	3.516	-1597.265	23.255	-5616.186503	-2271115.440256	16-25-48	89-52-13	9.998
W24-28	-97650.614	15.658	-1594.437	-17.578	-24965.265230	1716460.638996	286-33-35	90-07-47	21.289
合計				倍面積	425.929997	-425.929997			62.596
				面積	212.9649988	212.9649988			

面積（座標法）計算書

地番：W24-1-3

測点名	[1] X(i)	[2] X(i+1)-X(i-1)	[3] Y(i)	[4] Y(i+1)-Y(i-1)	[2]*[3]	[1]*[4]	方向角	夾角	距離
W24-53	-97636.169	20.531	-1590.177	-16.105	-32648.012903	1572418.243021	286-38-18	90-12-30	21.254
W24-52	-97630.083	-8.378	-1610.541	-24.665	13492.648348	2408074.297561	196-33-35	89-55-17	15.089
W24-21	-97644.546	-20.531	-1614.842	16.105	33154.417383	-1572553.164978	106-33-35	90-00-00	21.289
W24-28	-97650.614	8.378	-1594.437	24.665	-13357.726391	-2408580.702041	16-25-48	89-52-13	15.060
合計				倍面積	641.326437	-641.326437			72.692
				面積	320.6632186	320.6632186			

面積（座標法）計算書

地番：W24-2-1

測点名	[1] X(i)	[2] X(i+1)-X(i-1)	[3] Y(i)	[4] Y(i+1)-Y(i-1)	[2]*[3]	[1]*[4]	方向角	夾角	距離
W24-22	-97654.130	-7.364	-1617.692	-24.423	11913.345448	2385024.638733	196-33-35	90-00-00	14.020
W24-50	-97667.569	-19.522	-1621.688	16.462	31657.805711	-1607783.902369	106-33-35	90-00-00	21.343
W24-51	-97673.652	7.364	-1601.230	24.423	-11792.114018	-2385501.416303	16-25-48	89-52-13	14.020
W24-27	-97660.204	19.522	-1597.265	-16.462	-31181.028141	1607662.670939	286-33-35	90-07-47	21.311
合計				倍面積	598.009000	-598.009000			70.694
				面積	299.0045000	299.0045000			

面積（座標法）計算書

地番：W24-2-2

測点名	[1] X(i)	[2] X(i+1)-X(i-1)	[3] Y(i)	[4] Y(i+1)-Y(i-1)	[2]*[3]	[1]*[4]	方向角	夾角	距離
W24-50	-97667.569	-7.551	-1621.688	-24.512	12245.961759	2394017.087833	196-33-35	90-00-00	14.224
W24-23	-97681.203	-19.727	-1625.742	16.434	32070.530598	-1605330.953805	106-33-35	90-00-00	21.375
W24-26	-97687.295	7.551	-1605.253	24.512	-12121.859630	-2394500.626707	16-25-48	89-52-13	14.224
W24-51	-97673.652	19.727	-1601.230	-16.434	-31586.991725	1605206.851676	286-33-35	90-07-47	21.343
合計				倍面積	607.641002	-607.641002			71.166
				面積	303.8205012	303.8205012			

面積（座標法）計算書

地 番： W24-3-1

測点名	[1] X(i)	[2] X(i+1)-X(i-1)	[3] Y(i)	[4] Y(i+1)-Y(i-1)	[2]*[3]	[1]*[4]	方向角	夾 角	距 離
W24-23	-97681.203	5.517	-1625.742	-20.660	-8969.452795	2018053.386087	196-33-35	90-00-00	0.600
W24-30	-97681.778	-3.678	-1625.913	10.265	5980.433581	-1002687.235846	106-33-35	90-00-00	10.887
W24-45	-97684.881	-18.994	-1615.477	5.711	30684.718564	-557842.502975	196-33-35	270-00-00	16.579
W24-43	-97700.772	-18.891	-1620.202	5.365	30607.865751	-524146.036570	106-33-35	90-00-00	10.527
W24-31	-97703.773	13.477	-1610.112	14.949	-21699.596423	-1460569.279666	16-25-48	89-52-13	17.179
W24-26	-97687.295	22.570	-1605.253	-15.630	-36229.902778	1526817.603072	286-33-35	90-07-47	21.375
合計				倍面積	374.065898	-374.065898			77.147
				面 積	187.0329494	187.0329494			

面積（座標法）計算書

地 番： W24-3-2

測点名	[1] X(i)	[2] X(i+1)-X(i-1)	[3] Y(i)	[4] Y(i+1)-Y(i-1)	[2]*[3]	[1]*[4]	方向角	夾 角	距 離
W24-32	-97697.669	-3.530	-1630.638	-23.390	5756.311816	2285183.399715	196-33-35	90-00-00	10.050
W24-48	-97707.303	-14.570	-1633.503	13.736	23799.637192	-1342144.898690	106-33-35	90-00-00	17.319
W24-49	-97712.239	-1.743	-1616.902	20.852	2817.461681	-2037456.819171	53-04-51	126-31-16	5.317
W24-5	-97709.045	5.660	-1612.651	5.962	-9127.400876	-582530.507688	34-45-20	161-40-29	3.002
W24-6	-97706.579	5.273	-1610.940	2.539	-8493.848048	-248053.001905	16-25-48	161-40-28	2.926
W24-31	-97703.773	8.910	-1610.112	-19.698	-14345.814954	1924595.480928	286-33-35	90-07-47	21.414
合計				倍面積	406.346811	-406.346811			60.028
				面 積	203.1734058	203.1734058			

面積（座標法）計算書

地番：W24-3-3

測点名	[1] X(i)	[2] X(i+1)-X(i-1)	[3] Y(i)	[4] Y(i+1)-Y(i-1)	[2]*[3]	[1]*[4]	方向角	夾角	距離
W24-48	-97707.303	-9.831	-1633.503	-20.992	16059.396403	2051070.049046	196-33-35	90-00-00	15.407
W24-3	-97722.070	-17.623	-1637.894	-0.285	28865.276879	27863.351690	124-49-13	108-15-38	5.002
W24-4	-97724.926	9.831	-1633.788	20.992	-16062.199577	-2051439.999408	53-04-51	108-15-38	21.121
W24-49	-97712.239	17.623	-1616.902	0.285	-28495.326517	-27860.548516	286-33-35	53-28-44	17.319
合計				倍面積	367.147188	-367.147188			58.849
				面積	183.5735940	183.5735940			

面積（座標法）計算書

地番：W24-3-4

測点名	[1] X(i)	[2] X(i+1)-X(i-1)	[3] Y(i)	[4] Y(i+1)-Y(i-1)	[2]*[3]	[1]*[4]	方向角	夾角	距離
W24-30	-97681.778	-12.788	-1625.913	-15.161	20792.240478	1480958.685591	196-33-35	90-00-00	16.579
W24-32	-97697.669	-18.994	-1630.638	5.711	30972.690862	-557915.530778	106-33-35	90-00-00	10.887
W24-43	-97700.772	12.788	-1620.202	15.161	-20719.212675	-1481246.657889	16-33-35	90-00-00	16.579
W24-45	-97684.881	18.994	-1615.477	-5.711	-30684.718564	557842.502975	286-33-35	90-00-00	10.887
合計				倍面積	361.000101	-361.000101			54.932
				面積	180.5000506	180.5000506			