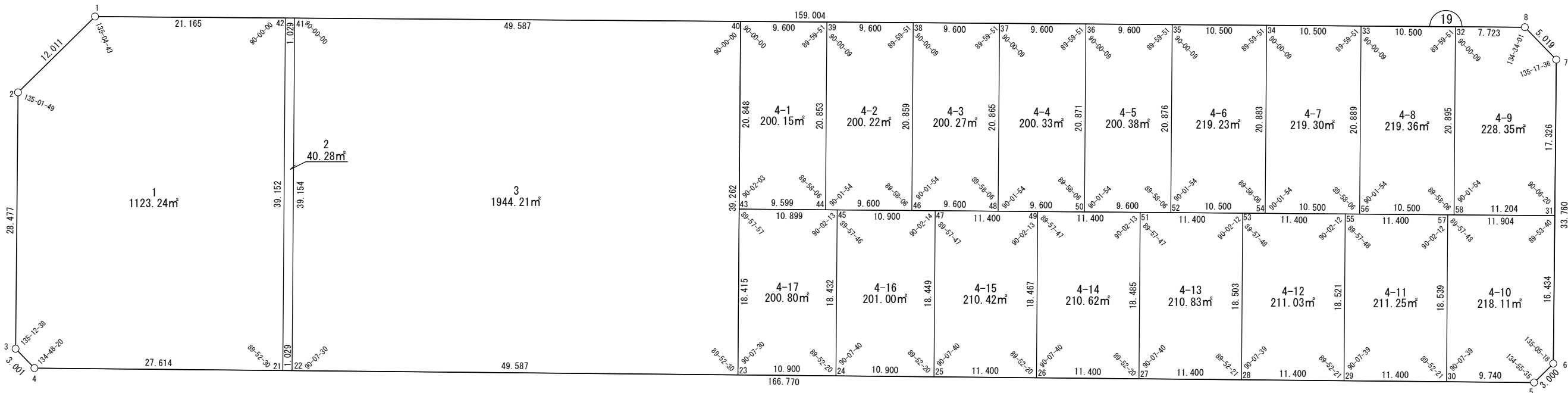




世界測地系



面積一覧表

地番名	地積
W19-1	1123.24 m ²
W19-2	40.28 m ²
W19-3	1944.21 m ²
W19-4-1	200.15 m ²
W19-4-2	200.22 m ²
W19-4-3	200.27 m ²
W19-4-4	200.33 m ²
W19-4-5	200.38 m ²
W19-4-6	219.23 m ²
W19-4-7	219.30 m ²
W19-4-8	219.36 m ²
W19-4-9	228.35 m ²
W19-4-10	218.11 m ²

地番名	地積
W19-4-11	211.25 m ²
W19-4-12	211.03 m ²
W19-4-13	210.83 m ²
W19-4-14	210.62 m ²
W19-4-15	210.42 m ²
W19-4-16	201.00 m ²
W19-4-17	200.80 m ²
合計	6669.38 m ²

座 標 一 覧 表

測 点 名	X 座 標	Y 座 標
W19-1	-97386.564	-1768.219
W19-2	-97392.294	-1778.775
W19-3	-97419.593	-1786.880
W19-4	-97422.237	-1785.459
W19-5	-97469.746	-1625.600
W19-6	-97468.314	-1622.964
W19-7	-97435.955	-1613.338
W19-8	-97431.529	-1615.706
W19-21	-97430.103	-1758.990
W19-22	-97430.396	-1758.003
W19-23	-97444.523	-1710.471
W19-24	-97447.628	-1700.023
W19-25	-97450.733	-1689.575
W19-26	-97453.981	-1678.647
W19-27	-97457.229	-1667.720

測 点 名	X 座 標	Y 座 標
W19-28	-97460.476	-1656.792
W19-29	-97463.724	-1645.864
W19-30	-97466.972	-1634.936
W19-31	-97452.562	-1618.279
W19-32	-97429.345	-1623.113
W19-33	-97426.376	-1633.185
W19-34	-97423.406	-1643.256
W19-35	-97420.437	-1653.328
W19-36	-97417.722	-1662.536
W19-37	-97415.007	-1671.744
W19-38	-97412.293	-1680.952
W19-39	-97409.578	-1690.160
W19-40	-97406.863	-1699.368
W19-41	-97392.840	-1746.931
W19-42	-97392.549	-1747.918

測 点 名	X 座 標	Y 座 標
W19-43	-97426.860	-1705.264
W19-44	-97429.580	-1696.058
W19-45	-97429.948	-1694.812
W19-46	-97432.300	-1686.852
W19-47	-97433.037	-1684.358
W19-48	-97435.020	-1677.645
W19-49	-97436.267	-1673.426
W19-50	-97437.741	-1668.439
W19-51	-97439.498	-1662.493
W19-52	-97440.461	-1659.232
W19-53	-97442.728	-1651.560
W19-54	-97443.436	-1649.163
W19-55	-97445.958	-1640.627
W19-56	-97446.412	-1639.093
W19-57	-97449.189	-1629.694
W19-58	-97449.387	-1629.023

面積（座標法）計算書

地番：W19-1

測点名	[1] X(i)	[2] X(i+1)-X(i-1)	[3] Y(i)	[4] Y(i+1)-Y(i-1)	[2]*[3]	[1]*[4]	方向角	夾角	距離
W19-42	-97392.549	43.539	-1747.918	-9.229	-76102.937819	898840.337804	286-25-37	90-00-00	21.165
W19-1	-97386.564	0.255	-1768.219	-30.857	-450.839555	3005078.400651	241-30-20	135-04-43	12.011
W19-2	-97392.294	-33.029	-1778.775	-18.661	58751.643861	1817449.283436	196-32-09	135-01-49	28.477
W19-3	-97419.593	-29.942	-1786.880	-6.684	53503.071953	651190.068834	151-44-47	135-12-38	3.001
W19-4	-97422.237	-10.510	-1785.459	27.890	18765.044810	-2717122.360389	106-33-07	134-48-20	27.614
W19-21	-97430.103	29.687	-1758.990	37.542	-52219.493249	-3657682.220337	16-25-37	89-52-30	39.152
合計				倍面積	2246.490001	-2246.490001			131.420
				面積	1123.2450006	1123.2450006			

面積（座標法）計算書

地番：W19-2

測点名	[1] X(i)	[2] X(i+1)-X(i-1)	[3] Y(i)	[4] Y(i+1)-Y(i-1)	[2]*[3]	[1]*[4]	方向角	夾角	距離
W19-41	-97392.840	37.847	-1746.931	10.086	-66116.198544	-982267.402505	286-25-37	90-00-00	1.029
W19-42	-97392.549	-37.263	-1747.918	-12.059	65132.617712	1174437.703043	196-25-37	90-00-00	39.152
W19-21	-97430.103	-37.847	-1758.990	-10.086	66572.588834	982643.222795	106-33-07	90-07-30	1.029
W19-22	-97430.396	37.263	-1758.003	12.059	-65508.438002	-1174894.093333	16-25-37	89-52-30	39.154
合計				倍面積	80.570000	-80.570000			80.364
				面積	40.2850002	40.2850002			

面積（座標法）計算書

地番：W19-3

測点名	[1] X(i)	[2] X(i+1)-X(i-1)	[3] Y(i)	[4] Y(i+1)-Y(i-1)	[2]*[3]	[1]*[4]	方向角	夾角	距離
W19-22	-97430.396	-51.682	-1758.003	36.459	90857.997482	-3552260.908532	106-33-07	90-07-30	49.587
W19-23	-97444.523	23.533	-1710.471	58.635	-40253.186000	-5713669.838277	16-25-37	89-52-30	39.262
W19-40	-97406.863	51.682	-1699.368	-36.459	-87827.589179	3551402.893652	286-25-37	90-00-00	49.587
W19-41	-97392.840	-23.533	-1746.931	-58.635	41111.200881	5710639.429974	196-25-37	90-00-00	39.154
合計				倍面積	3888.423183	-3888.423183			177.590
				面積	1944.2115920	1944.2115920			

面積（座標法）計算書

地番：W19-4-1

測点名	[1] X(i)	[2] X(i+1)-X(i-1)	[3] Y(i)	[4] Y(i+1)-Y(i-1)	[2]*[3]	[1]*[4]	方向角	夾角	距離
W19-39	-97409.578	22.717	-1690.160	-3.310	-38394.932144	322430.407601	286-25-37	89-59-51	9.600
W19-40	-97406.863	-17.282	-1699.368	-15.104	29368.289381	1471203.384932	196-25-37	90-00-00	20.848
W19-43	-97426.860	-22.717	-1705.264	3.310	38738.038839	-322487.611477	106-27-40	90-02-03	9.599
W19-44	-97429.580	17.282	-1696.058	15.104	-29311.085504	-1471546.491627	16-25-46	89-58-06	20.853
合計				倍面積	400.310571	-400.310571			60.900
				面積	200.1552856	200.1552856			

面積（座標法）計算書

地 番： W19-4-2

測点名	[1] X(i)	[2] X(i+1)-X(i-1)	[3] Y(i)	[4] Y(i+1)-Y(i-1)	[2]*[3]	[1]*[4]	方向角	夾 角	距 離
W19-38	-97412.293	22.722	-1680.952	-3.308	-38195.028703	322280.748072	286-25-37	89-59-51	9.600
W19-39	-97409.578	-17.287	-1690.160	-15.106	29218.026840	1471491.652962	196-25-46	90-00-09	20.853
W19-44	-97429.580	-22.722	-1696.058	3.308	38538.276418	-322337.941168	106-27-40	90-01-54	9.600
W19-46	-97432.300	17.287	-1686.852	15.106	-29160.833743	-1471834.900678	16-25-46	89-58-06	20.859
合計				倍面積	400.440811	-400.440811			60.912
				面 積	200.2204060	200.2204060			

面積（座標法）計算書

地番：W19-4-3

測点名	[1] X(i)	[2] X(i+1)-X(i-1)	[3] Y(i)	[4] Y(i+1)-Y(i-1)	[2]*[3]	[1]*[4]	方向角	夾角	距離
W19-37	-97415.007	22.728	-1671.744	-3.307	-37995.023473	322131.069958	286-25-37	89-59-51	9.600
W19-38	-97412.293	-17.293	-1680.952	-15.108	29068.119809	1471691.309071	196-25-46	90-00-09	20.859
W19-46	-97432.300	-22.728	-1686.852	3.307	38338.391557	-322188.253146	106-27-40	90-01-54	9.600
W19-48	-97435.020	17.293	-1677.645	15.108	-29010.936622	-1472034.677156	16-25-46	89-58-06	20.865
合計				倍面積	400.551272	-400.551272			60.924
				面積	200.2756360	200.2756360			

面積（座標法）計算書

地番：W19-4-4

測点名	[1] X(i)	[2] X(i+1)-X(i-1)	[3] Y(i)	[4] Y(i+1)-Y(i-1)	[2]*[3]	[1]*[4]	方向角	夾角	距離
W19-36	-97417.722	22.733	-1662.536	-3.305	-37794.916624	321981.392743	286-25-37	89-59-51	9.600
W19-37	-97415.007	-17.298	-1671.744	-15.109	28918.111160	1471890.983766	196-25-46	90-00-09	20.865
W19-48	-97435.020	-22.733	-1677.645	3.305	38138.405097	-322038.566006	106-27-40	90-01-54	9.600
W19-50	-97437.741	17.298	-1668.439	15.109	-28860.937898	-1472234.472240	16-25-46	89-58-06	20.871
合計				倍面積	400.661736	-400.661736			60.936
				面積	200.3308681	200.3308681			

面積（座標法）計算書

地番：W19-4-5

測点名	[1] X(i)	[2] X(i+1)-X(i-1)	[3] Y(i)	[4] Y(i+1)-Y(i-1)	[2]*[3]	[1]*[4]	方向角	夾角	距離
W19-35	-97420.437	22.739	-1653.328	-3.304	-37594.708321	321831.706686	286-25-37	89-59-51	9.600
W19-36	-97417.722	-17.304	-1662.536	-15.111	28768.000891	1472090.657561	196-25-46	90-00-09	20.871
W19-50	-97437.741	-22.739	-1668.439	3.304	37938.317201	-321888.870005	106-27-40	90-01-54	9.600
W19-52	-97440.461	17.304	-1659.232	15.111	-28710.837572	-1472434.266441	16-25-46	89-58-06	20.876
合計				倍面積	400.772199	-400.772199			60.947
				面積	200.3860998	200.3860998			

面積（座標法）計算書

地 番： W19-4-6

測点名	[1] X(i)	[2] X(i+1)-X(i-1)	[3] Y(i)	[4] Y(i+1)-Y(i-1)	[2]*[3]	[1]*[4]	方向角	夾 角	距 離
W19-34	-97423.406	22.999	-1643.256	-4.165	-37793.843692	405770.007422	286-25-37	89-59-51	10.500
W19-35	-97420.437	-17.055	-1653.328	-15.976	28196.996122	1556389.808712	196-25-46	90-00-09	20.876
W19-52	-97440.461	-22.999	-1659.232	4.165	38161.281701	-405841.040486	106-27-40	90-01-54	10.500
W19-54	-97443.436	17.055	-1649.163	15.976	-28125.963058	-1556757.246720	16-25-46	89-58-06	20.883
合計				倍面積	438.471072	-438.471072			62.759
				面 積	219.2355365	219.2355365			

面積（座標法）計算書

地番：W19-4-7

測点名	[1] X(i)	[2] X(i+1)-X(i-1)	[3] Y(i)	[4] Y(i+1)-Y(i-1)	[2]*[3]	[1]*[4]	方向角	夾角	距離
W19-33	-97426.376	23.005	-1633.185	-4.163	-37572.064613	405608.829068	286-25-37	89-59-51	10.500
W19-34	-97423.406	-17.061	-1643.256	-15.978	28035.148809	1556610.796591	196-25-46	90-00-09	20.883
W19-54	-97443.436	-23.005	-1649.163	4.163	37939.640023	-405679.856878	106-27-40	90-01-54	10.500
W19-56	-97446.412	17.061	-1639.093	15.978	-27964.120999	-1556978.372001	16-25-46	89-58-06	20.889
合計				倍面積	438.603221	-438.603221			62.772
				面積	219.3016106	219.3016106			

面積（座標法）計算書

地番：W19-4-8

測点名	[1] X(i)	[2] X(i+1)-X(i-1)	[3] Y(i)	[4] Y(i+1)-Y(i-1)	[2]*[3]	[1]*[4]	方向角	夾角	距離
W19-32	-97429.345	23.011	-1623.113	-4.161	-37350.163805	405447.630392	286-25-37	89-59-51	10.500
W19-33	-97426.376	-17.067	-1633.185	-15.980	27873.179929	1556831.785309	196-25-46	90-00-09	20.889
W19-56	-97446.412	-23.011	-1639.093	4.161	37717.876635	-405518.652926	106-27-40	90-01-54	10.500
W19-58	-97449.387	17.067	-1629.023	15.980	-27802.157395	-1557199.498138	16-25-46	89-58-06	20.895
合計				倍面積	438.735363	-438.735363			62.784
				面積	219.3676819	219.3676819			

面積（座標法）計算書

地番：W19-4-9

測点名	[1] X(i)	[2] X(i+1)-X(i-1)	[3] Y(i)	[4] Y(i+1)-Y(i-1)	[2]*[3]	[1]*[4]	方向角	夾角	距離
W19-7	-97435.955	21.033	-1613.338	2.573	-33933.249536	-250701.445729	331-51-36	135-17-36	5.019
W19-8	-97431.529	6.610	-1615.706	-9.775	-10679.890345	952403.037062	286-25-37	134-34-01	7.723
W19-32	-97429.345	-17.858	-1623.113	-13.318	28985.701145	1297543.849145	196-25-46	90-00-09	20.895
W19-58	-97449.387	-23.217	-1629.023	4.835	37820.985288	-471153.734613	106-27-40	90-01-54	11.204
W19-31	-97452.562	13.432	-1618.279	15.685	-21736.827995	-1528548.424420	16-34-00	90-06-20	17.326
合計				倍面積	456.718554	-456.718554			62.167
				面積	228.3592774	228.3592774			

面積（座標法）計算書

地 番： W19-4-10

測点名	[1] X(i)	[2] X(i+1)-X(i-1)	[3] Y(i)	[4] Y(i+1)-Y(i-1)	[2]*[3]	[1]*[4]	方向角	夾 角	距 離
W19-30	-97466.972	-20.557	-1634.936	4.094	33610.089147	-399024.596952	106-33-07	90-07-39	9.740
W19-5	-97469.746	-1.342	-1625.600	11.972	2181.840597	-1166889.235157	61-28-42	134-55-35	3.000
W19-6	-97468.314	17.184	-1622.964	7.322	-27889.580465	-713638.364051	16-34-00	135-05-18	16.434
W19-31	-97452.562	19.125	-1618.279	-6.730	-30949.549872	655836.514817	286-27-40	89-53-40	11.904
W19-57	-97449.189	-14.410	-1629.694	-16.658	23483.440191	1623279.441745	196-25-28	89-57-48	18.539
合計				倍面積	436.239598	-436.239598			59.617
				面 積	218.1197993	218.1197993			

面積（座標法）計算書

地番：W19-4-11

測点名	[1] X(i)	[2] X(i+1)-X(i-1)	[3] Y(i)	[4] Y(i+1)-Y(i-1)	[2]*[3]	[1]*[4]	方向角	夾角	距離
W19-57	-97449.189	21.013	-1629.694	-5.691	-34245.276215	554597.512921	286-27-40	90-02-12	11.400
W19-55	-97445.958	-14.535	-1640.627	-16.170	23846.544312	1575707.325406	196-25-28	89-57-48	18.521
W19-29	-97463.724	-21.013	-1645.864	5.691	34585.062823	-554680.233807	106-33-07	90-07-39	11.400
W19-30	-97466.972	14.535	-1634.936	16.170	-23763.823427	-1576047.112014	16-25-28	89-52-21	18.539
合計				倍面積	422.507494	-422.507494			59.860
				面積	211.2537470	211.2537470			

面積（座標法）計算書

地番：W19-4-12

測点名	[1] X(i)	[2] X(i+1)-X(i-1)	[3] Y(i)	[4] Y(i+1)-Y(i-1)	[2]*[3]	[1]*[4]	方向角	夾角	距離
W19-28	-97460.476	-20.996	-1656.792	5.696	34785.842083	-555117.437103	106-33-07	90-07-39	11.400
W19-29	-97463.724	14.518	-1645.864	16.165	-23894.429079	-1575454.606989	16-25-28	89-52-21	18.521
W19-55	-97445.958	20.996	-1640.627	-5.696	-34446.453334	555034.745966	286-27-40	90-02-12	11.400
W19-53	-97442.728	-14.518	-1651.560	-16.165	23977.120217	1575115.218241	196-25-28	89-57-48	18.503
合計				倍面積	422.079886	-422.079886			59.824
				面積	211.0399431	211.0399431			

面積（座標法）計算書

地番：W19-4-13

測点名	[1] X(i)	[2] X(i+1)-X(i-1)	[3] Y(i)	[4] Y(i+1)-Y(i-1)	[2]*[3]	[1]*[4]	方向角	夾角	距離
W19-27	-97457.229	-20.979	-1667.720	5.701	34986.461467	-555597.959004	106-33-07	90-07-40	11.400
W19-28	-97460.476	14.501	-1656.792	16.159	-24024.447416	-1574903.092981	16-25-28	89-52-21	18.503
W19-53	-97442.728	20.979	-1651.560	-5.701	-34647.459431	555515.292035	286-27-40	90-02-12	11.400
W19-51	-97439.498	-14.501	-1662.493	-16.159	24107.114385	1574564.090945	196-25-27	89-57-47	18.485
合計				倍面積	421.669005	-421.669005			59.788
				面積	210.8345026	210.8345026			

面積（座標法）計算書

地番：W19-4-14

測点名	[1] X(i)	[2] X(i+1)-X(i-1)	[3] Y(i)	[4] Y(i+1)-Y(i-1)	[2]*[3]	[1]*[4]	方向角	夾角	距離
W19-26	-97453.981	-20.961	-1678.647	5.706	35186.702889	-556078.428157	106-33-07	90-07-40	11.400
W19-27	-97457.229	14.483	-1667.720	16.154	-24154.088457	-1574351.602482	16-25-27	89-52-20	18.485
W19-51	-97439.498	20.961	-1662.493	-5.706	-34848.087396	555995.785533	286-27-40	90-02-13	11.400
W19-49	-97436.267	-14.483	-1673.426	-16.154	24236.731081	1574012.986989	196-25-27	89-57-47	18.467
合計				倍面積	421.258116	-421.258116			59.752
				面積	210.6290585	210.6290585			

面積（座標法）計算書

地番：W19-4-15

測点名	[1] X(i)	[2] X(i+1)-X(i-1)	[3] Y(i)	[4] Y(i+1)-Y(i-1)	[2]*[3]	[1]*[4]	方向角	夾角	距離
W19-25	-97450.733	-20.944	-1689.575	5.711	35386.566849	-556558.873797	106-33-07	90-07-40	11.400
W19-26	-97453.981	14.466	-1678.647	16.149	-24283.351706	-1573800.145243	16-25-27	89-52-20	18.467
W19-49	-97436.267	20.944	-1673.426	-5.711	-35048.337718	556476.255696	286-27-40	90-02-13	11.400
W19-47	-97433.037	-14.466	-1684.358	-16.149	24365.969807	1573461.916113	196-25-27	89-57-47	18.449
合計				倍面積	420.847231	-420.847231			59.716
				面積	210.4236156	210.4236156			

面積（座標法）計算書

地番：W19-4-16

測点名	[1] X(i)	[2] X(i+1)-X(i-1)	[3] Y(i)	[4] Y(i+1)-Y(i-1)	[2]*[3]	[1]*[4]	方向角	夾角	距離
W19-24	-97447.628	-20.785	-1700.023	5.237	35335.158480	-510313.397564	106-33-07	90-07-40	10.900
W19-25	-97450.733	14.591	-1689.575	15.665	-24652.902383	-1526542.407130	16-25-27	89-52-20	18.449
W19-47	-97433.037	20.785	-1684.358	-5.237	-35009.564790	510236.986485	286-27-41	90-02-14	10.900
W19-45	-97429.948	-14.591	-1694.812	-15.665	24729.313463	1526216.813439	196-25-27	89-57-46	18.432
合計				倍面積	402.004770	-402.004770			58.681
				面積	201.0023852	201.0023852			

面積（座標法）計算書

地番：W19-4-17

測点名	[1] X(i)	[2] X(i+1)-X(i-1)	[3] Y(i)	[4] Y(i+1)-Y(i-1)	[2]*[3]	[1]*[4]	方向角	夾角	距離
W19-23	-97444.523	-20.768	-1710.471	5.241	35523.609487	-510685.550032	106-33-07	90-07-30	10.900
W19-24	-97447.628	14.575	-1700.023	15.660	-24777.270364	-1526016.700010	16-25-27	89-52-20	18.432
W19-45	-97429.948	20.768	-1694.812	-5.241	-35198.380479	510609.167374	286-27-40	90-02-13	10.899
W19-43	-97426.860	-14.575	-1705.264	-15.660	24853.653023	1525691.471002	196-25-37	89-57-57	18.415
合計				倍面積	401.611666	-401.611666			58.646
				面積	200.8058332	200.8058332			