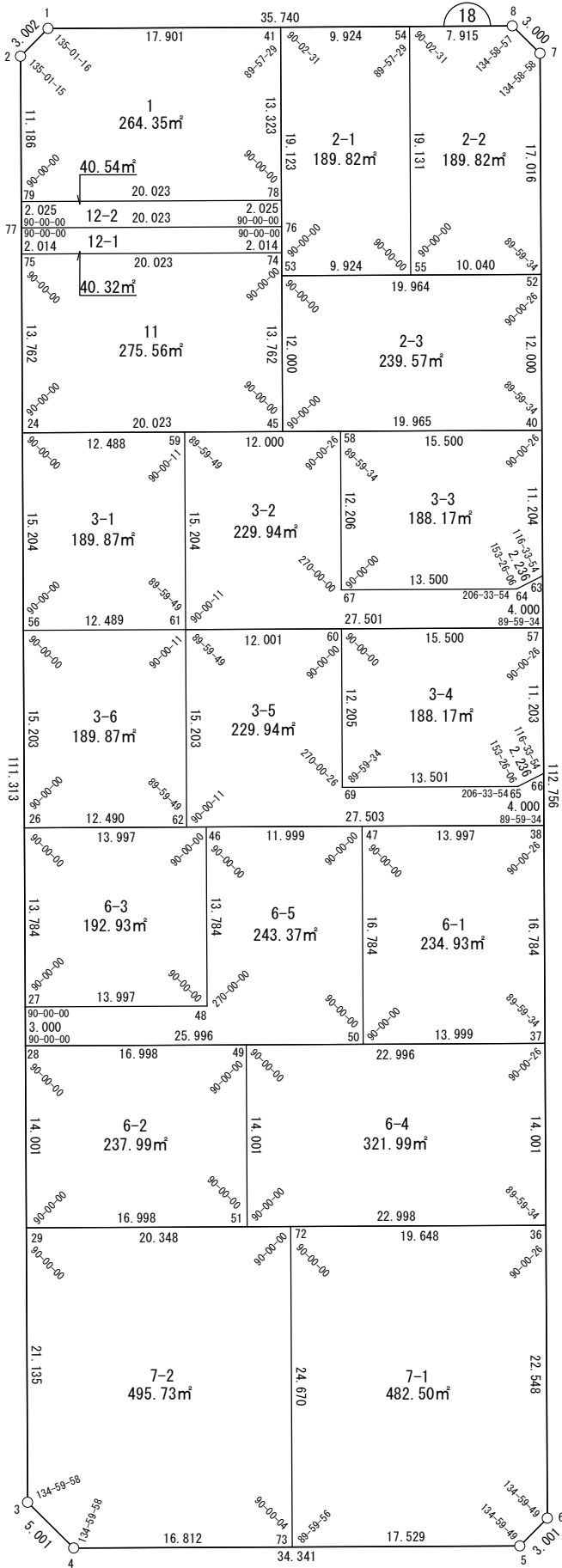


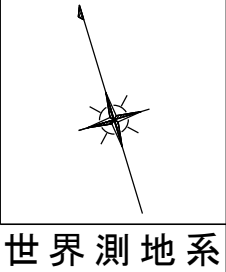
面積一覧表

地番名	地積
W18-1	264.35㎡
W18-2-1	189.82㎡
W18-2-2	189.82㎡
W18-2-3	239.57㎡
W18-3-1	189.87㎡
W18-3-2	229.94㎡
W18-3-3	188.17㎡
W18-3-4	188.17㎡
W18-3-5	229.94㎡
W18-3-6	189.87㎡
W18-6-1	234.93㎡
W18-6-2	237.99㎡
W18-6-3	192.93㎡
W18-6-4	321.99㎡
W18-6-5	243.37㎡
W18-7-1	482.50㎡
W18-7-2	495.73㎡
W18-11	275.56㎡
W18-12-2	40.54㎡
W18-12-1	40.32㎡
合計	4665.38㎡



座 標 一 覧 表

測 点 名	X 座 標	Y 座 標
W18-1	-97480.158	-1611.751
W18-2	-97481.589	-1614.390
W18-3	-97588.288	-1646.106
W18-4	-97592.685	-1643.724
W18-5	-97602.469	-1610.807
W18-6	-97601.040	-1608.168
W18-7	-97492.954	-1576.054
W18-8	-97490.317	-1577.484
W18-24	-97509.374	-1622.649
W18-26	-97538.521	-1631.313
W18-27	-97551.733	-1635.240
W18-28	-97554.609	-1636.095
W18-29	-97568.030	-1640.084
W18-36	-97579.426	-1601.746
W18-37	-97566.004	-1597.759
W18-38	-97549.916	-1592.978
W18-40	-97520.768	-1584.318
W18-41	-97485.246	-1594.588
W18-45	-97515.079	-1603.456
W18-46	-97542.509	-1617.896
W18-47	-97545.927	-1606.395
W18-48	-97555.721	-1621.823
W18-49	-97559.452	-1619.802
W18-50	-97562.016	-1611.177
W18-51	-97572.873	-1623.791
W18-52	-97509.265	-1580.900
W18-53	-97503.577	-1600.037
W18-54	-97488.067	-1585.073
W18-55	-97506.405	-1590.524
W18-56	-97523.948	-1626.981
W18-57	-97535.342	-1588.648
W18-58	-97516.352	-1599.176
W18-59	-97512.932	-1610.679
W18-60	-97530.926	-1603.506
W18-61	-97527.506	-1615.010
W18-62	-97542.079	-1619.341
W18-63	-97531.508	-1587.509
W18-64	-97531.897	-1589.711
W18-65	-97546.470	-1594.041
W18-66	-97546.081	-1591.839
W18-67	-97528.052	-1602.652
W18-69	-97542.625	-1606.983
W18-72	-97573.827	-1620.580
W18-73	-97597.475	-1627.609
W18-74	-97501.888	-1599.535
W18-75	-97496.182	-1618.728
W18-76	-97499.957	-1598.961
W18-77	-97494.252	-1618.154
W18-78	-97498.017	-1598.384
W18-79	-97492.311	-1617.577



面積（座標法）計算書

地番： W18-1

測点名	[1] X(i)	[2] X(i+1)-X(i-1)	[3] Y(i)	[4] Y(i+1)-Y(i-1)	[2]*[3]	[1]*[4]	方向角	夾角	距離
W18-78	-97498.017	7.065	-1598.384	22.989	-11292.918462	-2241372.809515	16-33-17	90-00-00	13.323
W18-41	-97485.246	17.858	-1594.588	-13.367	-28476.682495	1303040.975069	286-30-46	89-57-29	17.901
W18-1	-97480.158	3.657	-1611.751	-19.802	-5894.301249	1930270.334512	241-32-02	135-01-16	3.002
W18-2	-97481.589	-12.153	-1614.390	-5.826	19619.986091	567960.543929	196-33-17	135-01-15	11.186
W18-79	-97492.311	-16.427	-1617.577	16.006	26572.633710	-1560427.761591	106-33-17	90-00-00	20.023
合計				倍面積 面積	528.717595 264.3587980	-528.717595 264.3587980			65.435

面積（座標法）計算書

地番：W18-2-1

測点名	[1] X(i)	[2] X(i+1)-X(i-1)	[3] Y(i)	[4] Y(i+1)-Y(i-1)	[2]*[3]	[1]*[4]	方向角	夾角	距離
W18-54	-97488.067	21.158	-1585.073	-4.064	-33537.562265	396208.272406	286-30-46	89-57-29	9.924
W18-41	-97485.246	-15.510	-1594.588	-14.964	24731.720874	1458758.598620	196-33-17	90-02-31	19.123
W18-53	-97503.577	-21.158	-1600.037	4.064	33854.173824	-396271.306848	106-33-17	90-00-00	9.924
W18-55	-97506.405	15.510	-1590.524	14.964	-24668.686432	-1459075.210179	16-33-17	90-00-00	19.131
合計				倍面積	379.646000	-379.646000			58.102
				面積	189.8230005	189.8230005			

面積（座標法）計算書

地番：W18-2-2

測点名	[1] X(i)	[2] X(i+1)-X(i-1)	[3] Y(i)	[4] Y(i+1)-Y(i-1)	[2]*[3]	[1]*[4]	方向角	夾角	距離
W18-55	-97506.405	-21.198	-1590.524	4.173	33716.164039	-406850.104731	106-33-17	90-00-00	10.040
W18-52	-97509.265	13.451	-1580.900	14.470	-21263.984855	-1410936.074649	16-32-51	89-59-34	17.016
W18-7	-97492.954	18.948	-1576.054	3.416	-29863.705340	-333056.862749	331-31-49	134-58-58	3.000
W18-8	-97490.317	4.887	-1577.484	-9.019	-7709.167250	879252.659133	286-30-46	134-58-57	7.915
W18-54	-97488.067	-16.088	-1585.073	-13.040	25500.344804	1271210.731599	196-33-17	90-02-31	19.131
合計				倍面積	379.651397	-379.651397			57.102
				面積	189.8256989	189.8256989			

面積（座標法）計算書

地番：W18-2-3

測点名	[1] X(i)	[2] X(i+1)-X(i-1)	[3] Y(i)	[4] Y(i+1)-Y(i-1)	[2]*[3]	[1]*[4]	方向角	夾角	距離
W18-53	-97503.577	-5.814	-1600.037	-22.556	9302.953877	2199252.974324	196-33-17	90-00-00	12.000
W18-45	-97515.079	-17.191	-1603.456	15.719	27565.598251	-1532810.073855	106-33-17	90-00-00	19.965
W18-40	-97520.768	5.814	-1584.318	22.556	-9211.562032	-2199640.736107	16-32-51	89-59-34	12.000
W18-52	-97509.265	17.191	-1580.900	-15.719	-27177.836468	1532718.682010	286-33-17	90-00-26	19.964
合計				倍面積	479.153628	-479.153628			63.929
				面積	239.5768142	239.5768142			

面積（座標法）計算書

地番：W18-3-1

測点名	[1] X(i)	[2] X(i+1)-X(i-1)	[3] Y(i)	[4] Y(i+1)-Y(i-1)	[2]*[3]	[1]*[4]	方向角	夾角	距離
W18-24	-97509.374	-11.015	-1622.649	-16.302	17873.852770	1589637.287623	196-33-17	90-00-00	15.204
W18-56	-97523.948	-18.132	-1626.981	7.639	29500.305385	-745000.485285	106-33-17	90-00-00	12.489
W18-61	-97527.506	11.015	-1615.010	16.302	-17789.705720	-1589932.881696	16-33-06	89-59-49	15.204
W18-59	-97512.932	18.132	-1610.679	-7.639	-29204.711312	744916.338235	286-33-17	90-00-11	12.488
合計				倍面積	379.741121	-379.741121			55.385
				面積	189.8705609	189.8705609			

面積（座標法）計算書

地番：W18-3-2

測点名	[1] X(i)	[2] X(i+1)-X(i-1)	[3] Y(i)	[4] Y(i+1)-Y(i-1)	[2]*[3]	[1]*[4]	方向角	夾角	距離
W18-59	-97512.932	-11.154	-1610.679	-15.834	17966.207186	1544030.207008	196-33-06	89-59-49	15.204
W18-61	-97527.506	-22.410	-1615.010	22.030	36191.887577	-2148547.250108	106-33-17	90-00-11	27.501
W18-57	-97535.342	-4.002	-1588.648	27.501	6357.252587	-2682286.067200	16-32-51	89-59-34	4.000
W18-63	-97531.508	3.445	-1587.509	-1.063	-5469.562411	103649.836366	259-58-57	63-26-06	2.236
W18-64	-97531.897	3.456	-1589.711	-15.143	-5494.038453	1476911.423378	286-32-51	206-33-54	13.500
W18-67	-97528.052	15.545	-1602.652	-9.465	-24913.333524	923061.279240	16-32-51	270-00-00	12.206
W18-58	-97516.352	15.119	-1599.176	-8.027	-24178.528475	782720.686828	286-33-17	90-00-26	12.000
合計				倍面積	459.884486	-459.884486			86.647
				面積	229.9422434	229.9422434			

面積（座標法）計算書

地 番： W18-3-3

測点名	[1] X(i)	[2] X(i+1)-X(i-1)	[3] Y(i)	[4] Y(i+1)-Y(i-1)	[2]*[3]	[1]*[4]	方向角	夾 角	距 離
W18-58	-97516.352	-7.284	-1599.176	-18.334	11647.876779	1787845.109162	196-32-51	89-59-34	12.206
W18-67	-97528.052	-15.545	-1602.652	9.465	24913.333524	-923061.279240	106-32-51	90-00-00	13.500
W18-64	-97531.897	-3.456	-1589.711	15.143	5494.038453	-1476911.423378	79-58-57	153-26-06	2.236
W18-63	-97531.508	11.129	-1587.509	5.393	-17666.807451	-525979.745109	16-32-51	116-33-54	11.204
W18-40	-97520.768	15.156	-1584.318	-11.667	-24012.096913	1137730.994173	286-33-17	90-00-26	15.500
合計				倍面積	376.344391	-376.344391			54.646
				面 積	188.1721958	188.1721958			

面積（座標法）計算書

地番：W18-3-4

測点名	[1] X(i)	[2] X(i+1)-X(i-1)	[3] Y(i)	[4] Y(i+1)-Y(i-1)	[2]*[3]	[1]*[4]	方向角	夾角	距離
W18-60	-97530.926	-7.283	-1603.506	-18.335	11677.623749	1788232.525494	196-33-17	90-00-00	12.205
W18-69	-97542.625	-15.544	-1606.983	9.465	24979.555679	-923219.225931	106-32-51	89-59-34	13.501
W18-65	-97546.470	-3.456	-1594.041	15.144	5509.683869	-1477272.364718	79-58-57	153-26-06	2.236
W18-66	-97546.081	11.128	-1591.839	5.393	-17713.894636	-526038.316799	16-32-51	116-33-54	11.203
W18-57	-97535.342	15.155	-1588.648	-11.667	-24076.628302	1137921.041595	286-33-17	90-00-26	15.500
合計				倍面積	376.340359	-376.340359			54.645
				面積	188.1701796	188.1701796			

面積（座標法）計算書

地 番： W18-3-5

測点名	[1] X(i)	[2] X(i+1)-X(i-1)	[3] Y(i)	[4] Y(i+1)-Y(i-1)	[2]*[3]	[1]*[4]	方向角	夾 角	距 離
W18-61	-97527.506	-11.153	-1615.010	-15.835	18012.897949	1544343.781914	196-33-06	89-59-49	15.203
W18-62	-97542.079	-22.409	-1619.341	22.031	36288.333774	-2148991.167379	106-33-17	90-00-11	27.503
W18-38	-97549.916	-4.002	-1592.978	27.502	6375.079038	-2682789.697512	16-32-51	89-59-34	4.000
W18-66	-97546.081	3.445	-1591.839	-1.063	-5484.480825	103665.323952	259-58-57	63-26-06	2.236
W18-65	-97546.470	3.456	-1594.041	-15.144	-5509.683869	1477272.364718	286-32-51	206-33-54	13.501
W18-69	-97542.625	15.544	-1606.983	-9.465	-24979.555679	923219.225931	16-33-17	270-00-26	12.205
W18-60	-97530.926	15.119	-1603.506	-8.026	-24242.708059	782820.286046	286-33-17	90-00-00	12.001
合計				倍面積	459.882329	-459.882329			86.649
				面 積	229.9411646	229.9411646			

面積（座標法）計算書

地番：W18-3-6

測点名	[1] X(i)	[2] X(i+1)-X(i-1)	[3] Y(i)	[4] Y(i+1)-Y(i-1)	[2]*[3]	[1]*[4]	方向角	夾角	距離
W18-56	-97523.948	-11.014	-1626.981	-16.303	17920.078145	1589929.214570	196-33-17	90-00-00	15.203
W18-26	-97538.521	-18.131	-1631.313	7.640	29578.092227	-745206.221366	106-33-17	90-00-00	12.490
W18-62	-97542.079	11.014	-1619.341	16.303	-17835.927443	-1590224.811180	16-33-06	89-59-49	15.203
W18-61	-97527.506	18.131	-1615.010	-7.640	-29282.495616	745122.070664	286-33-17	90-00-11	12.489
合計				倍面積	379.747312	-379.747312			55.385
				面積	189.8736562	189.8736562			

面積（座標法）計算書

地番：W18-6-1

測点名	[1] X(i)	[2] X(i+1)-X(i-1)	[3] Y(i)	[4] Y(i+1)-Y(i-1)	[2]*[3]	[1]*[4]	方向角	夾角	距離
W18-50	-97562.016	-20.077	-1611.177	8.636	32347.201559	-842556.776402	106-33-17	90-00-00	13.999
W18-37	-97566.004	12.100	-1597.759	18.199	-19332.972875	-1775563.220958	16-32-51	89-59-34	16.784
W18-38	-97549.916	20.077	-1592.978	-8.636	-31981.833059	842452.278903	286-33-17	90-00-26	13.997
W18-47	-97545.927	-12.100	-1606.395	-18.199	19437.470374	1775197.852459	196-33-17	90-00-00	16.784
合計				倍面積	469.865998	-469.865998			61.564
				面積	234.9329993	234.9329993			

面積（座標法）計算書

地番：W18-6-2

測点名	[1] X(i)	[2] X(i+1)-X(i-1)	[3] Y(i)	[4] Y(i+1)-Y(i-1)	[2]*[3]	[1]*[4]	方向角	夾角	距離
W18-49	-97559.452	18.264	-1619.802	-12.304	-29584.372999	1200354.539520	286-33-17	90-00-00	16.998
W18-28	-97554.609	-8.578	-1636.095	-20.283	14034.028684	1978668.577387	196-33-17	90-00-00	14.001
W18-29	-97568.030	-18.264	-1640.084	12.304	29954.819741	-1200460.078778	106-33-17	90-00-00	16.998
W18-51	-97572.873	8.578	-1623.791	20.283	-13928.489426	-1979039.024130	16-33-17	90-00-00	14.001
合計				倍面積	475.986000	-475.986000			61.998
				面積	237.9930003	237.9930003			

面積（座標法）計算書

地番：W18-6-3

測点名	[1] X(i)	[2] X(i+1)-X(i-1)	[3] Y(i)	[4] Y(i+1)-Y(i-1)	[2]*[3]	[1]*[4]	方向角	夾角	距離
W18-26	-97538.521	-9.224	-1631.313	-17.344	15047.641692	1691740.862872	196-33-17	90-00-00	13.784
W18-27	-97551.733	-17.201	-1635.240	9.489	28127.234826	-925712.038813	106-33-17	90-00-00	13.997
W18-48	-97555.721	9.224	-1621.823	17.344	-14960.108626	-1692039.197157	16-33-17	90-00-00	13.784
W18-46	-97542.509	17.201	-1617.896	-9.489	-27828.900541	925624.505748	286-33-17	90-00-00	13.997
合計				倍面積	385.867350	-385.867350			55.562
				面積	192.9336752	192.9336752			

面積（座標法）計算書

地番：W18-6-4

測点名	[1] X(i)	[2] X(i+1)-X(i-1)	[3] Y(i)	[4] Y(i+1)-Y(i-1)	[2]*[3]	[1]*[4]	方向角	夾角	距離
W18-51	-97572.873	-19.974	-1623.791	18.055	32433.383316	-1761716.408599	106-33-17	90-00-00	22.998
W18-36	-97579.426	6.869	-1601.746	26.033	-11001.733682	-2540243.073887	16-32-51	89-59-34	14.001
W18-37	-97566.004	19.974	-1597.759	-18.055	-31913.412338	1761592.393576	286-33-17	90-00-26	22.996
W18-49	-97559.452	-6.869	-1619.802	-26.033	11125.748705	2539723.102909	196-33-17	90-00-00	14.001
合計				倍面積	643.986001	-643.986001			73.996
				面積	321.9930006	321.9930006			

面積（座標法）計算書

地 番： W18-6-5

測点名	[1] X(i)	[2] X(i+1)-X(i-1)	[3] Y(i)	[4] Y(i+1)-Y(i-1)	[2]*[3]	[1]*[4]	方向角	夾 角	距 離
W18-27	-97551.733	1.113	-1635.240	-14.272	-1819.314421	1392227.643196	196-33-17	90-00-00	3.000
W18-28	-97554.609	-10.283	-1636.095	24.063	16823.319631	-2347480.740657	106-33-17	90-00-00	25.996
W18-50	-97562.016	8.681	-1611.177	29.700	-13986.861988	-2897619.150747	16-33-17	90-00-00	16.784
W18-47	-97545.927	19.507	-1606.395	-6.719	-31335.714729	655402.512381	286-33-17	90-00-00	11.999
W18-46	-97542.509	-9.794	-1617.896	-15.429	15845.207528	1504943.794021	196-33-17	90-00-00	13.784
W18-48	-97555.721	-9.224	-1621.823	-17.344	14960.108626	1692039.197157	286-33-17	270-00-00	13.997
合計				倍面積	486.744647	-486.744647			85.560
				面 積	243.3723237	243.3723237			

面積（座標法）計算書

地番：W18-7-1

測点名	[1] X(i)	[2] X(i+1)-X(i-1)	[3] Y(i)	[4] Y(i+1)-Y(i-1)	[2]*[3]	[1]*[4]	方向角	夾角	距離
W18-36	-97579.426	27.212	-1601.746	-12.412	-43587.257523	1211142.584942	286-33-17	90-00-26	19.648
W18-72	-97573.827	-18.049	-1620.580	-25.863	29250.146607	2523556.994339	196-33-17	90-00-00	24.670
W18-73	-97597.475	-28.642	-1627.609	9.773	46617.770115	-953863.332885	106-33-13	89-59-56	17.529
W18-5	-97602.469	-3.565	-1610.807	19.441	5742.148494	-1897506.630387	61-33-02	134-59-49	3.001
W18-6	-97601.040	23.043	-1608.168	9.060	-37057.792521	-884294.631183	16-32-51	134-59-49	22.548
合計				倍面積	965.015174	-965.015174			87.396
				面積	482.5075871	482.5075871			

面積（座標法）計算書

地番：W18-7-2

測点名	[1] X(i)	[2] X(i+1)-X(i-1)	[3] Y(i)	[4] Y(i+1)-Y(i-1)	[2]*[3]	[1]*[4]	方向角	夾角	距離
W18-29	-97568.030	-14.461	-1640.084	-25.526	23716.965754	2490544.642515	196-33-17	90-00-00	21.135
W18-3	-97588.288	-24.655	-1646.106	-3.640	40585.430666	355219.592691	151-33-15	134-59-58	5.001
W18-4	-97592.685	-9.187	-1643.724	18.497	15100.482828	-1805164.745514	106-33-13	134-59-58	16.812
W18-73	-97597.475	18.858	-1627.609	23.144	-30692.959669	-2258825.994648	16-33-17	90-00-04	24.670
W18-72	-97573.827	29.445	-1620.580	-12.475	-47718.446756	1217235.032132	286-33-17	90-00-00	20.348
合計				倍面積	991.472823	-991.472823			87.966
				面積	495.7364118	495.7364118			

面積（座標法）計算書

地番：W18-11

測点名	[1] X(i)	[2] X(i+1)-X(i-1)	[3] Y(i)	[4] Y(i+1)-Y(i-1)	[2]*[3]	[1]*[4]	方向角	夾角	距離
W18-24	-97509.374	-18.897	-1622.649	15.272	30663.160275	-1489121.178212	106-33-17	90-00-00	20.023
W18-45	-97515.079	7.487	-1603.456	23.114	-12004.586557	-2253982.518897	16-33-17	90-00-00	13.762
W18-74	-97501.888	18.897	-1599.535	-15.272	-30226.371860	1489006.844627	286-33-17	90-00-00	20.023
W18-75	-97496.182	-7.487	-1618.728	-23.114	12118.920141	2253545.730481	196-33-17	90-00-00	13.762
合計				倍面積	551.122000	-551.122000			67.570
				面積	275.5610000	275.5610000			

面積（座標法）計算書

地番：W18-12-1

測点名	[1] X(i)	[2] X(i+1)-X(i-1)	[3] Y(i)	[4] Y(i+1)-Y(i-1)	[2]*[3]	[1]*[4]	方向角	夾角	距離
W18-74	-97501.888	-3.775	-1599.535	19.767	6038.101260	-1927285.554570	16-33-17	90-00-00	2.014
W18-76	-97499.957	7.635	-1598.961	-18.619	-12208.660787	1815362.950074	286-33-17	90-00-00	20.023
W18-77	-97494.252	3.775	-1618.154	-19.767	-6108.386764	1927134.628866	196-33-17	90-00-00	2.014
W18-75	-97496.182	-7.635	-1618.728	18.619	12359.586491	-1815292.664571	106-33-17	90-00-00	20.023
合計				倍面積	80.640200	-80.640200			44.074
				面積	40.3201001	40.3201001			

面積（座標法）計算書

地番：W18-12-2

測点名	[1] X(i)	[2] X(i+1)-X(i-1)	[3] Y(i)	[4] Y(i+1)-Y(i-1)	[2]*[3]	[1]*[4]	方向角	夾角	距離
W18-76	-97499.957	-3.764	-1598.961	19.770	6019.095117	-1927552.639702	16-33-17	90-00-00	2.025
W18-78	-97498.017	7.646	-1598.384	-18.616	-12221.090110	1815021.581297	286-33-17	90-00-00	20.023
W18-79	-97492.311	3.764	-1617.577	-19.770	-6089.172739	1927401.481879	196-33-17	90-00-00	2.025
W18-77	-97494.252	-7.646	-1618.154	18.616	12372.247932	-1814951.503675	106-33-17	90-00-00	20.023
合計				倍面積	81.080199	-81.080199			44.096
				面積	40.5401000	40.5401000			