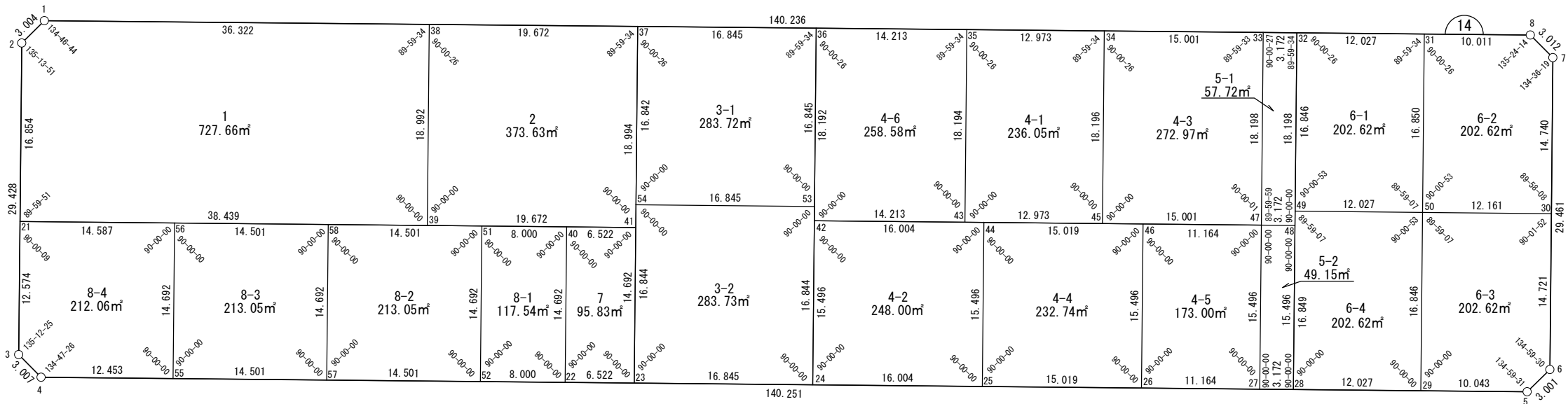


面積一覧表

地番名	地積	地番名	地積
W14-1	727.66 m <sup>2</sup>	W14-6-2	202.62 m <sup>2</sup>
W14-2	373.63 m <sup>2</sup>	W14-6-3	202.62 m <sup>2</sup>
W14-3-1	283.72 m <sup>2</sup>	W14-6-4	202.62 m <sup>2</sup>
W14-3-2	283.73 m <sup>2</sup>	W14-7	95.83 m <sup>2</sup>
W14-4-1	236.05 m <sup>2</sup>	W14-8-1	117.54 m <sup>2</sup>
W14-4-2	248.00 m <sup>2</sup>	W14-8-2	213.05 m <sup>2</sup>
W14-4-3	272.97 m <sup>2</sup>	W14-8-3	213.05 m <sup>2</sup>
W14-4-4	232.74 m <sup>2</sup>	W14-8-4	212.06 m <sup>2</sup>
W14-4-5	173.00 m <sup>2</sup>	合計	4858.96 m <sup>2</sup>
W14-4-6	258.58 m <sup>2</sup>		
W14-5-1	57.72 m <sup>2</sup>		
W14-5-2	49.15 m <sup>2</sup>		
W14-6-1	202.62 m <sup>2</sup>		



世界測地系



座 標 一 覧 表

測 点 名	X 座 標	Y 座 標	測 点 名	X 座 標	Y 座 標	測 点 名	X 座 標	Y 座 標
W14-1	-97287.266	-1717.689	W14-28	-97353.239	-1613.994	W14-43	-97329.508	-1639.431
W14-2	-97288.707	-1720.325	W14-29	-97356.667	-1602.466	W14-44	-97330.018	-1637.714
W14-3	-97316.914	-1728.714	W14-30	-97343.990	-1586.009	W14-45	-97333.206	-1626.996
W14-4	-97319.553	-1727.272	W14-31	-97324.369	-1592.861	W14-46	-97334.299	-1623.318
W14-5	-97359.530	-1592.839	W14-32	-97320.942	-1604.390	W14-47	-97337.482	-1612.617
W14-6	-97358.101	-1590.201	W14-33	-97320.039	-1607.430	W14-48	-97338.386	-1609.577
W14-7	-97329.860	-1581.812	W14-34	-97315.765	-1621.809	W14-49	-97337.089	-1609.191
W14-8	-97327.221	-1583.265	W14-35	-97312.068	-1634.245	W14-50	-97340.520	-1597.664
W14-21	-97304.862	-1725.130	W14-36	-97308.019	-1647.869	W14-51	-97317.286	-1683.349
W14-22	-97333.650	-1679.869	W14-37	-97303.220	-1664.015	W14-52	-97331.369	-1687.537
W14-23	-97335.509	-1673.617	W14-38	-97297.615	-1682.872	W14-53	-97324.165	-1652.670
W14-24	-97340.310	-1657.472	W14-39	-97315.819	-1688.285	W14-54	-97319.363	-1668.816
W14-25	-97344.872	-1642.131	W14-40	-97319.567	-1675.681	W14-55	-97323.103	-1715.336
W14-26	-97349.153	-1627.735	W14-41	-97321.426	-1669.429	W14-56	-97309.020	-1711.148
W14-27	-97352.335	-1617.034	W14-42	-97325.457	-1653.054	W14-57	-97327.236	-1701.437
						W14-58	-97313.153	-1697.249

# 面積（座標法）計算書

地番：W14-1

測点名	[1] X(i)	[2] X(i+1)-X(i-1)	[3] Y(i)	[4] Y(i+1)-Y(i-1)	[2]*[3]	[1]*[4]	方向角	夾角	距離
W14-38	-97297.615	28.553	-1682.872	-29.404	-48050.424133	2860890.444046	286-33-14	89-59-34	36.322
W14-1	-97287.266	8.908	-1717.689	-37.453	-15300.550993	3643674.900532	241-19-58	134-46-44	3.004
W14-2	-97288.707	-17.596	-1720.325	-7.441	30271.039300	723899.906341	196-33-49	135-13-51	16.854
W14-21	-97304.862	-27.111	-1725.130	32.039	46770.816730	-3117589.066789	106-33-40	89-59-51	38.439
W14-39	-97315.819	7.247	-1688.285	42.258	-12235.560503	-4112331.504531	16-33-40	90-00-00	18.992
合計				倍面積	1455.320400	-1455.320400			113.611
				面積	727.6602004	727.6602004			

# 面積（座標法）計算書

地番：W14-2

測点名	[1] X(i)	[2] X(i+1)-X(i-1)	[3] Y(i)	[4] Y(i+1)-Y(i-1)	[2]*[3]	[1]*[4]	方向角	夾角	距離
W14-39	-97315.819	-23.811	-1688.285	13.443	40199.963456	-1308181.719791	106-33-40	90-00-00	19.672
W14-41	-97321.426	12.599	-1669.429	24.270	-21033.086434	-2361995.686622	16-33-40	90-00-00	18.994
W14-37	-97303.220	23.811	-1664.015	-13.443	-39622.066465	1308012.356382	286-33-14	89-59-34	19.672
W14-38	-97297.615	-12.599	-1682.872	-24.270	21202.449842	2361417.789631	196-33-40	90-00-26	18.992
合計				倍面積	747.260399	-747.260399			77.330
				面積	373.6301998	373.6301998			

面積（座標法）計算書

地番：W14-3-1

測点名	[1] X(i)	[2] X(i+1)-X(i-1)	[3] Y(i)	[4] Y(i+1)-Y(i-1)	[2]*[3]	[1]*[4]	方向角	夾角	距離
W14-37	-97303.220	-11.345	-1664.015	-20.947	18877.466877	2038222.000308	196-33-40	90-00-26	16.842
W14-54	-97319.363	-20.945	-1668.816	11.345	34953.559532	-1104090.242088	106-33-40	90-00-00	16.845
W14-53	-97324.165	11.345	-1652.670	20.947	-18748.762978	-2038660.740284	16-33-40	90-00-00	16.845
W14-36	-97308.019	20.945	-1647.869	-11.345	-34514.819556	1103961.538190	286-33-14	89-59-34	16.845
合計				倍面積	567.443874	-567.443874			67.377
				面積	283.7219373	283.7219373			

面積（座標法）計算書

地番：W14-3-2

測点名	[1] X(i)	[2] X(i+1)-X(i-1)	[3] Y(i)	[4] Y(i+1)-Y(i-1)	[2]*[3]	[1]*[4]	方向角	夾角	距離
W14-54	-97319.363	-11.344	-1668.816	-20.947	18931.078947	2038545.426677	196-33-40	90-00-00	16.844
W14-23	-97335.509	-20.947	-1673.617	11.345	35056.712259	-1104228.603589	106-33-40	90-00-00	16.845
W14-24	-97340.310	11.344	-1657.472	20.947	-18802.386049	-2038984.195909	16-33-40	90-00-00	16.844
W14-53	-97324.165	20.947	-1652.670	-11.345	-34617.943027	1104099.910691	286-33-40	90-00-00	16.845
合計				倍面積	567.462129	-567.462129			67.378
				面積	283.7310647	283.7310647			

# 面積（座標法）計算書

地番：W14-4-1

測点名	[1] X(i)	[2] X(i+1)-X(i-1)	[3] Y(i)	[4] Y(i+1)-Y(i-1)	[2]*[3]	[1]*[4]	方向角	夾角	距離
W14-34	-97315.765	21.137	-1621.809	-7.249	-34280.696550	705455.475844	286-33-14	89-59-34	12.973
W14-35	-97312.068	-13.743	-1634.245	-17.622	22459.616084	1714800.620608	196-33-40	90-00-26	18.194
W14-43	-97329.508	-21.137	-1639.431	7.249	34653.171212	-705555.101581	106-33-40	90-00-00	12.973
W14-45	-97333.206	13.743	-1626.996	17.622	-22359.990347	-1715173.095271	16-33-40	90-00-00	18.196
合計				倍面積	472.100399	-472.100399			62.336
				面積	236.0501997	236.0501997			

面積（座標法）計算書

地番：W14-4-2

測点名	[1] X(i)	[2] X(i+1)-X(i-1)	[3] Y(i)	[4] Y(i+1)-Y(i-1)	[2]*[3]	[1]*[4]	方向角	夾角	距離
W14-44	-97330.018	19.415	-1637.714	-10.923	-31796.622576	1063136.179139	286-33-40	90-00-00	16.004
W14-42	-97325.457	-10.292	-1653.054	-19.757	17012.879942	1922868.349656	196-33-40	90-00-00	15.496
W14-24	-97340.310	-19.415	-1657.472	10.923	32180.211376	-1063248.596339	106-33-40	90-00-00	16.004
W14-25	-97344.872	10.292	-1642.131	19.757	-16900.462742	-1923251.938456	16-33-40	90-00-00	15.496
合計				倍面積	496.006000	-496.006000			63.000
				面積	248.0030001	248.0030001			

# 面積（座標法）計算書

地番：W14-4-3

測点名	[1] X(i)	[2] X(i+1)-X(i-1)	[3] Y(i)	[4] Y(i+1)-Y(i-1)	[2]*[3]	[1]*[4]	方向角	夾角	距離
W14-45	-97333.206	-21.717	-1626.996	9.192	35333.219959	-894703.295424	106-33-40	90-00-00	15.001
W14-47	-97337.482	13.167	-1612.617	19.566	-21233.284840	-1904486.377347	16-33-41	90-00-01	18.198
W14-33	-97320.039	21.717	-1607.430	-9.192	-34908.312352	894582.262401	286-33-14	89-59-33	15.001
W14-34	-97315.765	-13.167	-1621.809	-19.566	21354.317863	1904061.469739	196-33-40	90-00-26	18.196
合計				倍面積	545.940631	-545.940631			66.396
				面積	272.9703156	272.9703156			



面積（座標法）計算書

地番：W14-4-4

測点名	[1] X(i)	[2] X(i+1)-X(i-1)	[3] Y(i)	[4] Y(i+1)-Y(i-1)	[2]*[3]	[1]*[4]	方向角	夾角	距離
W14-25	-97344.872	-19.135	-1642.131	9.979	31421.450544	-971414.940333	106-33-40	90-00-00	15.019
W14-26	-97349.153	10.572	-1627.735	18.813	-17209.189829	-1831449.004439	16-33-40	90-00-00	15.496
W14-46	-97334.299	19.135	-1623.318	-9.979	-31061.468400	971309.436476	286-33-40	90-00-00	15.019
W14-44	-97330.018	-10.572	-1637.714	-18.813	17314.693687	1831089.022295	196-33-40	90-00-00	15.496
合計				倍面積	465.486001	-465.486001			61.030
				面積	232.7430008	232.7430008			

面積（座標法）計算書

地番：W14-4-5

測点名	[1] X(i)	[2] X(i+1)-X(i-1)	[3] Y(i)	[4] Y(i+1)-Y(i-1)	[2]*[3]	[1]*[4]	方向角	夾角	距離
W14-26	-97349.153	-18.036	-1627.735	6.284	29357.352244	-611735.466475	106-33-40	90-00-00	11.164
W14-27	-97352.335	11.671	-1617.034	15.118	-18872.929613	-1471774.918065	16-33-40	90-00-00	15.496
W14-47	-97337.482	18.036	-1612.617	-6.284	-29084.688043	611662.124676	286-33-40	90-00-00	11.164
W14-46	-97334.299	-11.671	-1623.318	-15.118	18946.271412	1471502.253865	196-33-40	90-00-00	15.496
合計				倍面積	346.006000	-346.006000			53.320
				面積	173.0030001	173.0030001			

# 面積（座標法）計算書

地番：W14-4-6

測点名	[1] X(i)	[2] X(i+1)-X(i-1)	[3] Y(i)	[4] Y(i+1)-Y(i-1)	[2]*[3]	[1]*[4]	方向角	夾角	距離
W14-35	-97312.068	21.489	-1634.245	-8.438	-35118.149832	821103.302916	286-33-14	89-59-34	14.213
W14-36	-97308.019	-13.388	-1647.869	-18.809	22061.990878	1830302.988406	196-33-40	90-00-26	18.192
W14-42	-97325.457	-21.489	-1653.054	8.438	35522.342837	-821216.270313	106-33-40	90-00-00	14.213
W14-43	-97329.508	13.388	-1639.431	18.809	-21949.023481	-1830707.181411	16-33-40	90-00-00	18.194
合計				倍面積	517.160402	-517.160402			64.812
				面積	258.5802011	258.5802011			

面積（座標法）計算書

地番：W14-5-1

測点名	[1] X(i)	[2] X(i+1)-X(i-1)	[3] Y(i)	[4] Y(i+1)-Y(i-1)	[2]*[3]	[1]*[4]	方向角	夾角	距離
W14-32	-97320.942	18.347	-1604.390	2.147	-29435.616036	-208930.088175	286-33-14	89-59-34	3.172
W14-33	-97320.039	-16.539	-1607.430	-8.227	26585.469312	800698.925143	196-33-41	90-00-27	18.198
W14-47	-97337.482	-18.347	-1612.617	-2.147	29586.565024	208965.594597	106-33-40	89-59-59	3.172
W14-48	-97338.386	16.539	-1609.577	8.227	-26620.975734	-800849.874131	16-33-40	90-00-00	18.198
合計				倍面積	115.442566	-115.442566			42.740
				面積	57.7212834	57.7212834			

# 面積（座標法）計算書

地番：W14-5-2

測点名	[1] X(i)	[2] X(i+1)-X(i-1)	[3] Y(i)	[4] Y(i+1)-Y(i-1)	[2]*[3]	[1]*[4]	方向角	夾角	距離
W14-27	-97352.335	-15.758	-1617.034	-1.377	25480.622377	134027.081925	106-33-40	90-00-00	3.172
W14-28	-97353.239	13.949	-1613.994	7.457	-22514.248950	-725999.105562	16-33-40	90-00-00	15.496
W14-48	-97338.386	15.758	-1609.577	1.377	-25363.111933	-134007.877481	286-33-40	90-00-00	3.172
W14-47	-97337.482	-13.949	-1612.617	-7.457	22495.044506	725881.595118	196-33-40	90-00-00	15.496
合計				倍面積	98.306000	-98.306000			37.336
				面積	49.1530002	49.1530002			

# 面積（座標法）計算書

地番：W14-6-1

測点名	[1] X(i)	[2] X(i+1)-X(i-1)	[3] Y(i)	[4] Y(i+1)-Y(i-1)	[2]*[3]	[1]*[4]	方向角	夾角	距離
W14-31	-97324.369	19.578	-1592.861	-6.725	-31184.854536	654552.241187	286-33-14	89-59-34	12.027
W14-32	-97320.942	-12.720	-1604.390	-16.330	20408.086136	1589257.003987	196-33-40	90-00-26	16.846
W14-49	-97337.089	-19.578	-1609.191	6.725	31504.562582	-654637.790219	106-34-33	90-00-53	12.027
W14-50	-97340.520	12.720	-1597.664	16.330	-20322.537104	-1589576.712033	16-33-40	89-59-07	16.850
合計				倍面積	405.257077	-405.257077			57.750
				面積	202.6285390	202.6285390			

# 面積（座標法）計算書

地番：W14-6-2

測点名	[1] X(i)	[2] X(i+1)-X(i-1)	[3] Y(i)	[4] Y(i+1)-Y(i-1)	[2]*[3]	[1]*[4]	方向角	夾角	距離
W14-7	-97329.860	16.768	-1581.812	2.744	-26524.053123	-267054.983686	331-09-00	134-36-19	3.012
W14-8	-97327.221	5.491	-1583.265	-11.050	-8693.533331	1075433.901896	286-33-14	135-24-14	10.011
W14-31	-97324.369	-13.299	-1592.861	-14.399	21183.357521	1401378.612066	196-33-40	90-00-26	16.850
W14-50	-97340.520	-19.620	-1597.664	6.852	31346.886301	-667004.987097	106-34-33	90-00-53	12.161
W14-30	-97343.990	10.660	-1586.009	15.853	-16907.399934	-1543157.800611	16-32-41	89-58-08	14.740
合計				倍面積 面積	405.257433 202.6287165	-405.257433 202.6287165			56.774

# 面積（座標法）計算書

地番：W14-6-3

測点名	[1] X(i)	[2] X(i+1)-X(i-1)	[3] Y(i)	[4] Y(i+1)-Y(i-1)	[2]*[3]	[1]*[4]	方向角	夾角	距離
W14-30	-97343.990	17.580	-1586.009	-7.463	-27882.715362	726507.455301	286-34-33	90-01-52	12.161
W14-50	-97340.520	-12.678	-1597.664	-16.457	20254.809397	1601925.778204	196-33-40	89-59-07	16.846
W14-29	-97356.667	-19.010	-1602.466	4.825	30462.429736	-469751.517589	106-33-40	90-00-00	10.043
W14-5	-97359.530	-1.433	-1592.839	12.265	2283.252923	-1194113.554916	61-33-11	134-59-31	3.001
W14-6	-97358.101	15.541	-1590.201	6.830	-24712.526910	-664973.410784	16-32-41	134-59-30	14.721
合計				倍面積	405.249784	-405.249784			56.772
				面積	202.6248921	202.6248921			



面積（座標法）計算書

地番：W14-6-4

測点名	[1] X(i)	[2] X(i+1)-X(i-1)	[3] Y(i)	[4] Y(i+1)-Y(i-1)	[2]*[3]	[1]*[4]	方向角	夾角	距離
W14-50	-97340.520	19.578	-1597.664	-6.725	-31279.158593	654655.920927	286-34-33	90-00-53	12.027
W14-49	-97337.089	-12.719	-1609.191	-16.330	20467.074010	1589483.090758	196-33-40	89-59-07	16.849
W14-28	-97353.239	-19.578	-1613.994	6.725	31598.861863	-654741.460579	106-33-40	90-00-00	12.027
W14-29	-97356.667	12.719	-1602.466	16.330	-20381.534358	-1589802.794027	16-33-40	90-00-00	16.846
合計				倍面積	405.242921	-405.242921			57.749
				面積	202.6214607	202.6214607			

# 面積（座標法）計算書

地番：W14-7

測点名	[1] X(i)	[2] X(i+1)-X(i-1)	[3] Y(i)	[4] Y(i+1)-Y(i-1)	[2]*[3]	[1]*[4]	方向角	夾角	距離
W14-22	-97333.650	-15.942	-1679.869	2.064	26780.533157	-200893.839857	106-33-40	90-00-00	6.522
W14-23	-97335.509	12.224	-1673.617	10.440	-20457.894026	-1016157.472257	16-33-40	90-00-00	14.692
W14-41	-97321.426	15.942	-1669.429	-2.064	-26614.102443	200868.610372	286-33-40	90-00-00	6.522
W14-40	-97319.567	-12.224	-1675.681	-10.440	20483.123511	1015991.041543	196-33-40	90-00-00	14.692
合計				倍面積	191.660199	-191.660199			42.428
				面積	95.8300998	95.8300998			

# 面積（座標法）計算書

地番：W14-8-1

測点名	[1] X(i)	[2] X(i+1)-X(i-1)	[3] Y(i)	[4] Y(i+1)-Y(i-1)	[2]*[3]	[1]*[4]	方向角	夾角	距離
W14-51	-97317.286	-11.803	-1683.349	-11.856	19867.845528	1153804.570605	196-33-40	90-00-00	14.692
W14-52	-97331.369	-16.363	-1687.537	3.480	27613.556572	-338746.414812	106-33-40	90-00-00	8.000
W14-22	-97333.650	11.803	-1679.869	11.856	-19826.768562	-1153998.574841	16-33-40	90-00-00	14.692
W14-40	-97319.567	16.363	-1675.681	-3.480	-27419.552336	338705.337846	286-33-40	90-00-00	8.000
合計				倍面積	235.081202	-235.081202			45.384
				面積	117.5406010	117.5406010			

面 積 ( 座 標 法 ) 計 算 書

地 番 : W14-8-2

測点名	[1] X(i)	[2] X(i+1)-X(i-1)	[3] Y(i)	[4] Y(i+1)-Y(i-1)	[2]*[3]	[1]*[4]	方向角	夾 角	距 離
W14-57	-97327.236	-18.216	-1701.437	9.711	30993.621809	-945173.491681	106-33-40	90-00-00	14.501
W14-52	-97331.369	9.950	-1687.537	18.087	-16790.397649	-1760438.755720	16-33-40	90-00-00	14.692
W14-51	-97317.286	18.216	-1683.349	-9.711	-30664.145145	945076.867745	286-33-40	90-00-00	14.501
W14-58	-97313.153	-9.950	-1697.249	-18.087	16887.021586	1760109.279056	196-33-40	90-00-00	14.692
合計				倍面積	426.100600	-426.100600			58.386
				面 積	213.0503000	213.0503000			

# 面積（座標法）計算書

地番：W14-8-3

測点名	[1] X(i)	[2] X(i+1)-X(i-1)	[3] Y(i)	[4] Y(i+1)-Y(i-1)	[2]*[3]	[1]*[4]	方向角	夾角	距離
W14-55	-97323.103	-18.216	-1715.336	9.711	31246.811355	-945133.350719	106-33-40	90-00-00	14.501
W14-57	-97327.236	9.950	-1701.437	18.087	-16928.689583	-1760363.996389	16-33-40	90-00-00	14.692
W14-58	-97313.153	18.216	-1697.249	-9.711	-30917.334692	945036.726783	286-33-40	90-00-00	14.501
W14-56	-97309.020	-9.950	-1711.148	-18.087	17025.313519	1760034.519725	196-33-40	90-00-00	14.692
合計				倍面積	426.100600	-426.100600			58.386
				面積	213.0503000	213.0503000			

# 面積（座標法）計算書

地番：W14-8-4

測点名	[1] X(i)	[2] X(i+1)-X(i-1)	[3] Y(i)	[4] Y(i+1)-Y(i-1)	[2]*[3]	[1]*[4]	方向角	夾角	距離
W14-56	-97309.020	18.241	-1711.148	-9.794	-31212.558346	953034.894367	286-33-40	90-00-00	14.587
W14-21	-97304.862	-7.894	-1725.130	-17.566	13618.228619	1709283.564905	196-33-49	90-00-09	12.574
W14-3	-97316.914	-14.691	-1728.714	-2.143	25396.622022	208531.899595	151-21-15	134-47-26	3.007
W14-4	-97319.553	-6.189	-1727.272	13.378	10689.855888	-1301978.553590	106-33-40	135-12-25	12.453
W14-55	-97323.103	10.533	-1715.336	16.125	-18068.027588	-1569295.925873	16-33-40	90-00-00	14.692
合計				倍面積	424.120595	-424.120595			57.313
				面積	212.0602978	212.0602978			