

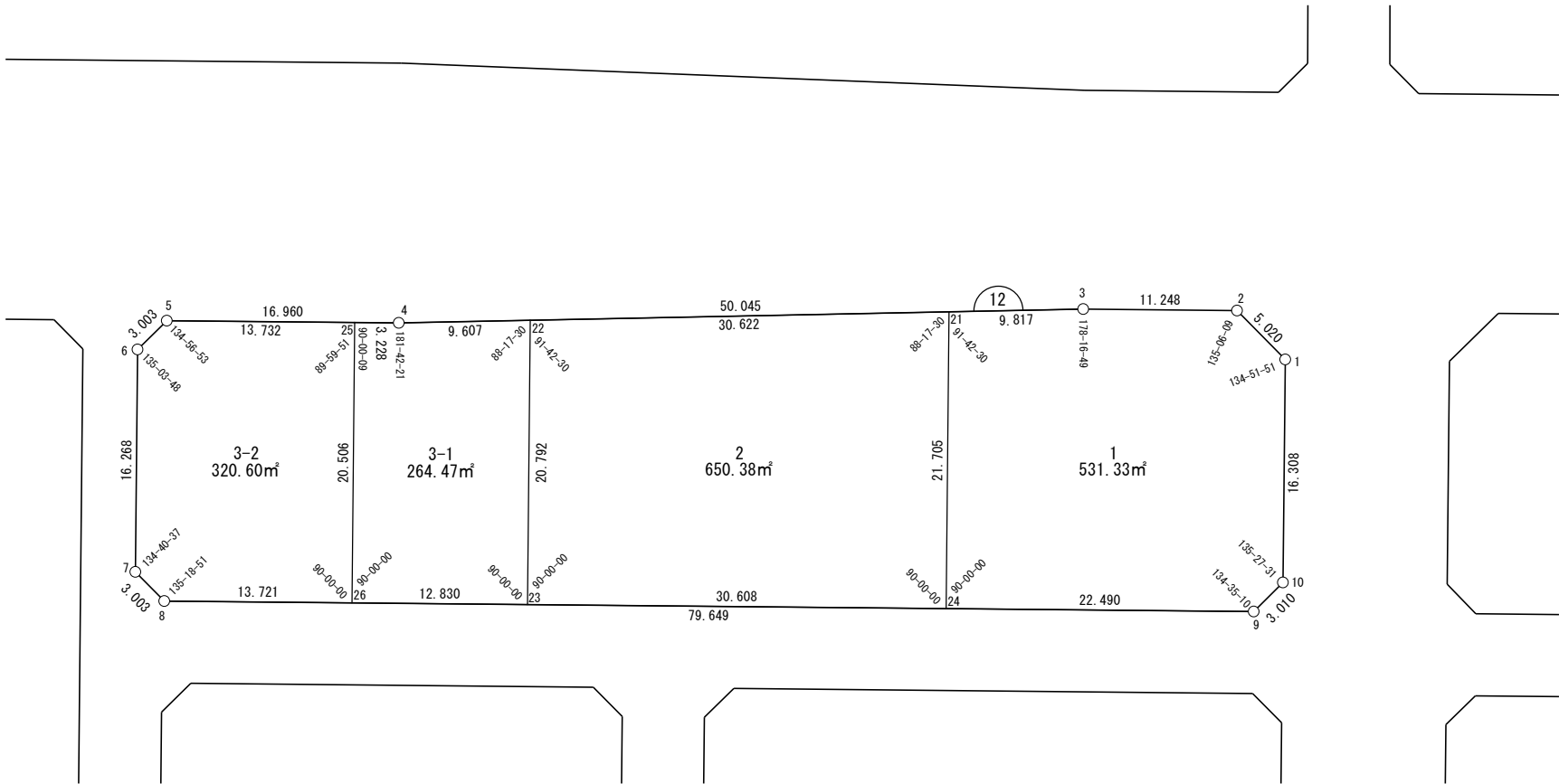
世界測地系

面積一覧表

地番名	地積
W12-1	531.33 m <sup>2</sup>
W12-2	650.38 m <sup>2</sup>
W12-3-1	264.47 m <sup>2</sup>
W12-3-2	320.60 m <sup>2</sup>
合計	1766.78 m <sup>2</sup>

座 標 一 覧 表

測 点 名	X 座 標	Y 座 標
W12-1	-97233.475	-1729.418
W12-2	-97235.873	-1733.828
W12-3	-97246.655	-1737.034
W12-4	-97295.030	-1749.852
W12-5	-97311.288	-1754.682
W12-6	-97313.927	-1753.249
W12-7	-97318.563	-1737.656
W12-8	-97317.118	-1735.023
W12-9	-97240.768	-1712.336
W12-10	-97238.132	-1713.789
W12-21	-97256.144	-1739.548
W12-22	-97285.744	-1747.391
W12-23	-97291.666	-1727.460
W12-24	-97262.326	-1718.742
W12-25	-97298.124	-1750.771
W12-26	-97303.965	-1731.115



# 面積（座標法）計算書

地番：W12-1

測点名	[1] X(i)	[2] X(i+1)-X(i-1)	[3] Y(i)	[4] Y(i+1)-Y(i-1)	[2]*[3]	[1]*[4]	方向角	夾角	距離
W12-24	-97262.326	15.375	-1718.742	27.212	-26426.479818	-2646701.208272	16-32-57	90-00-00	22.490
W12-9	-97240.768	24.194	-1712.336	4.953	-41428.524329	-481611.704853	331-08-07	134-35-10	3.010
W12-10	-97238.132	7.293	-1713.789	-17.082	-12499.461533	1661010.708107	286-35-38	135-27-31	16.308
W12-1	-97233.475	2.259	-1729.418	-20.038	-3906.423121	1948408.912586	241-27-29	134-51-51	5.020
W12-2	-97235.873	-13.180	-1733.828	-7.616	22851.690755	740523.217745	196-33-38	135-06-09	11.248
W12-3	-97246.655	-20.270	-1737.034	-5.720	35210.490362	556288.480476	194-50-27	178-16-49	9.817
W12-21	-97256.144	-15.672	-1739.548	18.292	27261.373683	-1778981.071790	106-32-57	91-42-30	21.705
合計				倍面積	1062.665998	-1062.665998			89.598
				面積	531.3329993	531.3329993			

# 面積（座標法）計算書

地番：W12-2

測点名	[1] X(i)	[2] X(i+1)-X(i-1)	[3] Y(i)	[4] Y(i+1)-Y(i-1)	[2]*[3]	[1]*[4]	方向角	夾角	距離
W12-23	-97291.666	23.418	-1727.460	28.649	-40453.056161	-2787345.679518	16-32-57	90-00-00	30.608
W12-24	-97262.326	35.523	-1718.742	-12.088	-61054.197802	1175677.685793	286-32-57	90-00-00	21.705
W12-21	-97256.144	-23.418	-1739.548	-28.649	40736.121602	2786327.978960	194-50-27	88-17-30	30.622
W12-22	-97285.744	-35.523	-1747.391	12.088	62071.898359	-1175960.751234	106-32-57	91-42-30	20.792
合計				倍面積	1300.765998	-1300.765998			103.727
				面積	650.3829992	650.3829992			

# 面積（座標法）計算書

地番：W12-3-1

測点名	[1] X(i)	[2] X(i+1)-X(i-1)	[3] Y(i)	[4] Y(i+1)-Y(i-1)	[2]*[3]	[1]*[4]	方向角	夾角	距離
W12-26	-97303.965	6.458	-1731.115	23.311	-11179.472029	-2268245.163859	16-32-57	90-00-00	12.830
W12-23	-97291.666	18.221	-1727.460	-16.276	-31476.545642	1583561.256881	286-32-57	90-00-00	20.792
W12-22	-97285.744	-3.364	-1747.391	-22.392	5877.653249	2178384.029025	194-50-27	88-17-30	9.607
W12-4	-97295.030	-12.380	-1749.852	-3.380	21663.918822	328848.970630	196-32-48	181-42-21	3.228
W12-25	-97298.124	-8.935	-1750.771	18.737	15643.389965	-1823078.037045	106-32-57	90-00-09	20.506
合計				倍面積	528.944366	-528.944366			66.963
				面積	264.4721832	264.4721832			

## 面 積 ( 座 標 法 ) 計 算 書

地 番 : W12-3-2

測点名	[1] X(i)	[2] X(i+1)-X(i-1)	[3] Y(i)	[4] Y(i+1)-Y(i-1)	[2]*[3]	[1]*[4]	方向角	夾 角	距 離
W12-25	-97298.124	-7.323	-1750.771	-23.567	12820.447025	2293050.959728	196-32-48	89-59-51	13.732
W12-5	-97311.288	-15.802	-1754.682	-2.478	27728.254432	241121.042827	151-29-41	134-56-53	3.003
W12-6	-97313.927	-7.275	-1753.249	17.026	12754.832299	-1656897.134333	106-33-29	135-03-48	16.268
W12-7	-97318.563	-3.191	-1737.656	18.226	5544.645773	-1773722.980491	61-14-06	134-40-37	3.003
W12-8	-97317.118	14.598	-1735.023	6.541	-25327.366754	-636547.117024	16-32-57	135-18-51	13.721
W12-26	-97303.965	18.993	-1731.115	-15.748	-32879.608575	1532354.025093	286-32-57	90-00-00	20.506
合計				倍面積	641.204199	-641.204199			70.233
				面 積	320.6021000	320.6021000			