

Mascot Character 'Risa'

Post this bill Fill in the garbage collection days of your area and affix this poster where it can be easily seen.

Household garbage

Toyota Region How to sort out and dispose of your garbage & recyclables

Plastic containers & packaging

Disposal site

Selective Garbage Collection Station

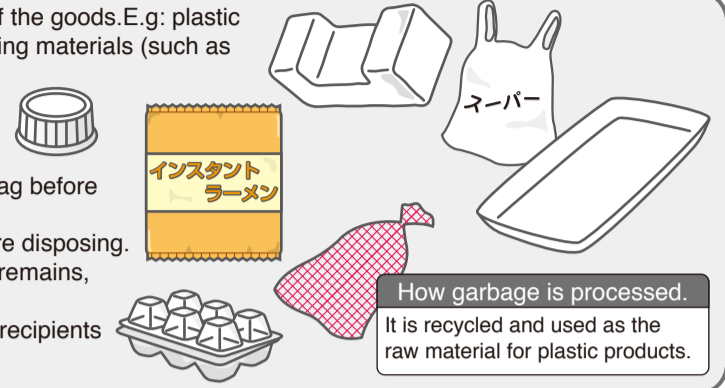
Each week

□ (day of week)

Plastic containers, packages and wrappings that cannot be used after the consumption of the goods. E.g: plastic recipients & cups, plastic bags, polythene bags, netting/mesh bags, plastic films, cushioning materials (such as polystyrene, etc), foodstuff trays and plates, bottle's cap and plastic label, etc.
*For more details, please consult the pamphlet "Plastic containers & packaging".

Ways of disposing the garbage

- Put them in the appropriate garbage bag (written in black letters). Tie up the garbage bag before disposing it.
- If dirt remains, please rinse the containers under running water and dry them well before disposing.
- When a recipient cannot be easily cleaned or after rinsing under running water dirt still remains, please dispose it as "burnable waste".
- Containers & recipients with the mark are considered plastic waste. In case the recipients does not show the mark , dispose them as "burnable waste".



How garbage is processed.
It is recycled and used as the raw material for plastic products.

Recyclable resources

Disposal site

Recyclable materials' collection station

Every month

□ st nd rd th
□ (day of week)

Recyclable materials are collected and reutilized.

Glass Bottles

Bottles of alcohol, beer, drinks, dry sea weed, cooking oil, jam, whiskey, medicines, etc.

Ways of disposing the garbage

- Remove the bottles' caps and dispose them as "metallic garbage" when they are made of metal or as "plastic garbage" when they are made of plastic.
- Empty the bottle and rinse it.
- Broken bottles should be disposed as "landfill garbage".
- Bottles of cooking oil, etc., even if they are stained, should be disposed as "recyclable resources".

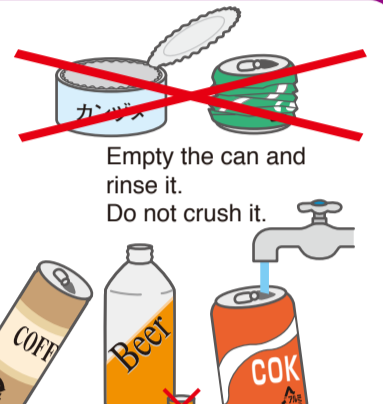


Beverage cans

Steel or aluminium cans containing juice, soft drink, beer and other beverages.

Ways of disposing the garbage

- Dispose metallic caps as "metallic garbage".
- *Dispose food cans, pet food cans and crushed cans as "metallic garbage".



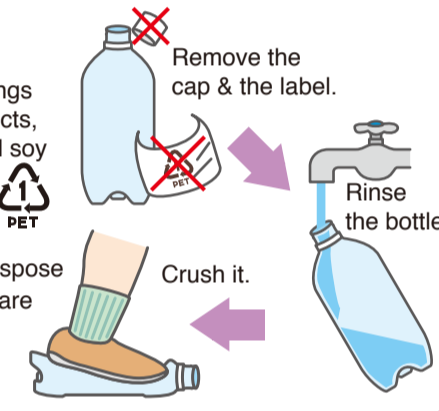
Empty the can and rinse it.
Do not crush it.

PET bottles.

Plastic bottles and containers for beverages, liquor, cooking seasonings (mirin), processed soy sauce products, vinegar, non-oil salad dressing, and soy sauce that have the following mark

Ways of disposing the garbage

- Remove the caps & labels and dispose them as "plastic garbage" if they are made of plastic.
- Empty, rinse and crush the bottle before disposing it.



Hazardous waste

Fluorescent lamps (not broken ones)
Batteries
Clinical thermometers (mercury)

Ways of disposing the garbage

- Dispose fluorescent lamps and thermometers without breaking them.
- *Electrical appliance shops collect rechargeable batteries (NiCd) and button batteries.
- *Electric bulbs and digital thermometers are not considered "hazardous waste" (dispose electric bulbs as "landfill garbage" and digital thermometers as "metallic garbage").



Burnable garbage

Disposal site

Selective Garbage Collection Station

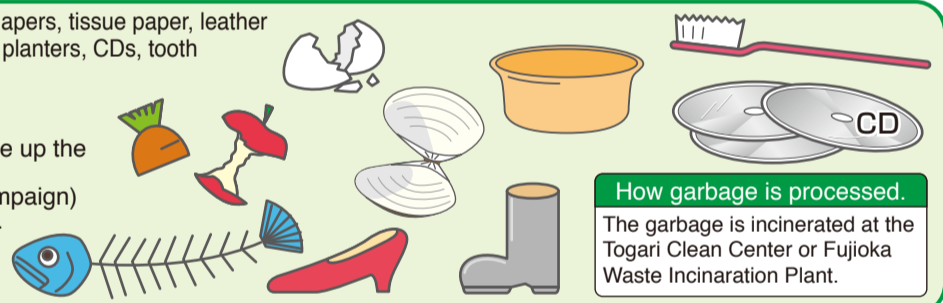
Each week

□ (day of week)

Raw garbage (food scraps, kitchen waste), shoes and boots, disposable diapers, tissue paper, leather goods (handbags, belts, etc.), goods made entirely of plastic (wash bowls, planters, CDs, tooth brushes, etc.), ashes (with no metal, glass, or other residuals), etc.

Ways of disposing the garbage

- Put them in the appropriate garbage bag (written in blue letters). Tie up the garbage bag before disposing it.
- Drain off excess water from food leftovers. (Wring out moisture campaign)
- Flush dirt from disposable diaper and artificial anus down the toilet.
- Soak up cooking oil* in paper or fabric.
- *It is collected at the designated recycling stations as a trial.



How garbage is processed.
The garbage is incinerated at the Togari Clean Center or Fujioka Waste Incineration Plant.

Metallic Garbage

Disposal site

Selective Garbage Collection Station

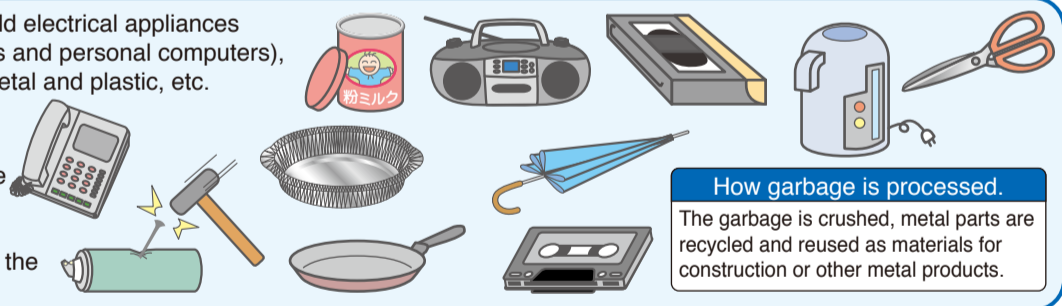
Every month

□ Wednesday

Metal products, cans other than beverage cans, household electrical appliances (excluding the four types of domestic electrical appliances and personal computers), aluminum foil, and composite products containing both metal and plastic, etc.

Ways of disposing the garbage

- Put them in the appropriate garbage bag (written in blue letters). Tie up the garbage bag before disposing it.
- Do not forget to punch a hole on spray cans and metal cylinders before disposing them. Open the hole outside the house and far from fire.



How garbage is processed.
The garbage is crushed, metal parts are recycled and reused as materials for construction or other metal products.

Landfill Garbage

Disposal site

Selective Garbage Collection Station

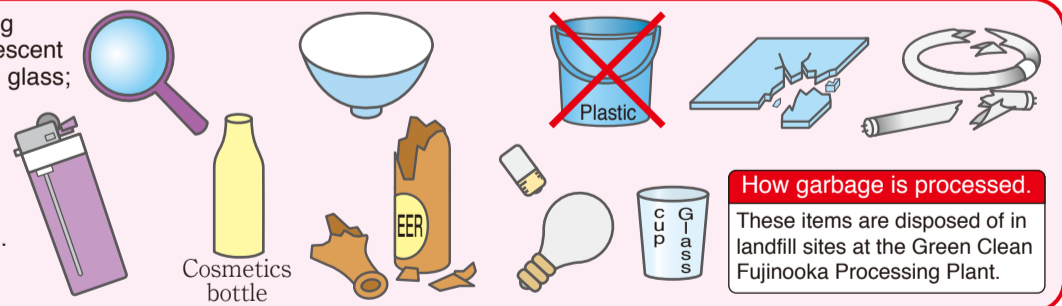
Every month

□ Wednesday

Glass & ceramic goods in general; glass bottles (excluding beverage bottles); electric bulbs; glow lamp; broken fluorescent light tubes; broken glass bottles; hand mirror; magnifying glass; gas lighter; etc.

Ways of disposing the garbage

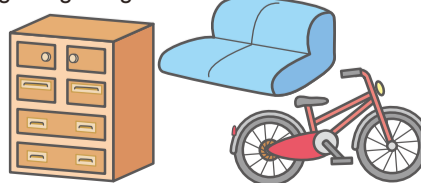
- Put them in the appropriate garbage bag (written in red letters). Tie up the garbage bag before disposing it.
- Wrap broken glasses securely in paper to avoid injuries.
- Empty the bottles.
- Ensure gas lighters are completely empty.



How garbage is processed.
These items are disposed of in landfill sites at the Green Clean Fujinooka Processing Plant.

Bulky Garbage (charged)

Large items such as furniture, bicycles, etc, that cannot fit into specified garbage bags.



Ways of disposing the garbage

- Please call the Reservation Center at least one week in advance to schedule the collection day of bulky garbage.

☎ 25-5353

Working Hours

From Monday to Friday (except on year-end holidays)
9:00 am to 5 pm

- Inform your address, name, telephone, desired day for collection, item to be collected and quantity.
- The staff will inform you the day of collection, the collection fee and reservation number. Collection fees vary according to the item to be disposed (¥300, ¥600, ¥900).
- "Bulky garbage disposal stickers" can be purchased at convenience stores, supermarkets, etc. Please attach the sticker to the item to be disposed.
- Place the item(s) in front of your residence until 8:30am on the day of collection. Your presence is not required when the items are collected.

Days of collection

Koromo Area	1st. Mon, 1st Thu, 2nd Tue, 2nd Fri, 3rd Wed, 4th Mon, 4th Thu
Takahashi & Matsudaira Areas	1st Tue, 2nd Wed, 3rd Thu, 4th Fri
Kamigo & Takaoka Areas	1st Wed, 2nd Mon, 2nd Thu, 3rd Tue, 3rd Fri, 4th Wed.
Sanage Area	1st Fri, 3rd Mon, 4th Tue

※Put your garbage out by 8:30 am on the day of collection, at the specified location

※Garbage and refuse generated by commercial or industrial activities (shops, restaurants, offices, etc.) cannot be disposed at the Garbage selective collection stations. For disposal, you must contact a licensed garbage collection company or transport them by yourself.

Are you doing it correctly? Separating Garbage and Recyclables

Plastic Containers and Packaging

These will be recycled and used as the raw material for plastic products.

These include the plastic containers, packages, and wrappings that become unnecessary after the product has been consumed or removed, such as egg cartons, instant noodle containers, food trays, and plastic shopping bags, etc.

Please look for the following mark as a guideline:



Items that were mistakenly disposed of as "plastic containers and packaging."



Points for disposal

- It is not necessary to remove price tag stickers or the like.
- Lightly rinse with water to remove any residue and then dispose of after drying them as much as possible.
- Dispose of items that have oil or other residue that cannot be removed with water as "burnable garbage".

Caution!

Plastic products such as planters, wash bowls, cutting boards, and the like are not plastic containers or packaging and should be disposed of as "burnable garbage".



Landfill Garbage

This is disposed of at the Green Clean Fujino-oka landfill site.

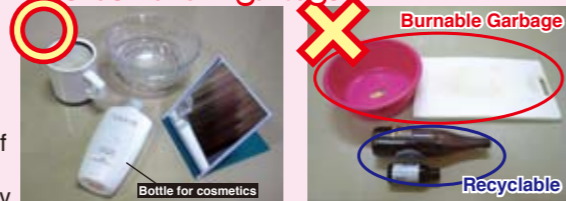
It includes light bulbs, cigarette lighters, broken glass bottles, ceramic goods, and broken fluorescent light tubes, etc.

Caution!

The following are NOT landfill garbage

- Hard plastic items (CDs, tooth brushes, washing bowls, etc.) are "burnable garbage".
- Plastic items that have even a little bit of metal on them are "metallic garbage".
- Bottles for cooking oil and the like that still contain residue should be disposed of on the "recycle day".
- Please dispose of cigarette lighters after first ensuring that they are completely empty.

Items that were mistakenly disposed of as "landfill garbage".



Burnable Garbage

This is incinerated at the Togari Clean Center and Fujioka Waste Incineration Plant.

It includes raw garbage, shoes and boots, disposable diapers, leather goods, cloth goods, and pruned branches, etc.

Caution!

- Hard plastic items (CDs, tooth brushes, washing bowls, etc.) are "burnable garbage".
- Please dispose of raw garbage after thoroughly draining off any water.
- Leather or cloth goods that have metal attached (belts, handbags, etc.) are disposed of as "burnable garbage".



Metallic Garbage

This is crushed to remove the metal parts, and the remaining plastic is incinerated.

It includes metal products, cans other than beverage cans, and household electric appliances (excluding the four types of domestic electrical appliances and personal computers), etc.

Caution!

- Hard plastic items that have even a little bit of metal on them (electrical appliances, video tapes, and cassette tapes, etc.) are "metallic garbage".
- The city will not collect and dispose of the four types of domestic electrical appliances and personal computers. (See the reverse side)
- Please ensure that spray cans and butane gas cylinders are completely empty and a hole has been punched in them before disposal.



Recycle Day

The materials collected will be recycled into new products.

These include glass bottles for beverages, beverage cans, plastic PET bottles, and hazardous waste (fluorescent lights, batteries, etc.).

Do not dispose of as garbage!

There are many cases of recyclable resources such as glass bottles for beverages, beverage cans, and plastic PET bottles being disposed of as garbage. In order to make effective use of limited resources, please cooperate with our efforts to collect separated recyclables.



Light bulbs and broken fluorescent tubes are "landfill garbage".

Canned food cans and electric thermometers are "metallic garbage".

Let's Implement the Wring Out Moisture Campaign

About 40% of the "burnable garbage" produced by a household is raw garbage. Furthermore, it is said that about 80% of that raw garbage is moisture.

By thoroughly draining off the water from raw garbage before disposal...

The weight of the raw garbage can be reduced by about 10%! That is about a 20 kg reduction per household each year!

For all of Toyota City, this would equal a reduction of about 3,000 tons a year!
※ In 2008, the amount of "burnable garbage" produced by households was about 77,000 tons.

Before wringing out moisture



232 grams



Wring out the moisture

After wringing out the moisture



202 grams

30 gram reduction!

In addition... it will also help contribute to the prevention of foul odors, decomposition, and global warming.

There are also other methods for draining off excess moisture.



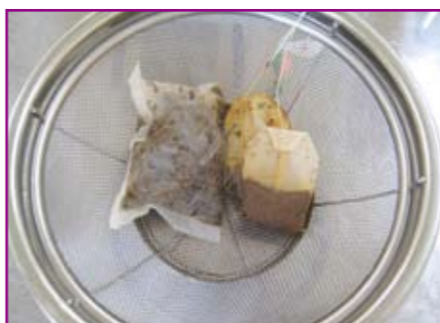
Peel off the skin before washing with water. Because this is done before washing, excess water is not included in the waste.



Place peeled skins into a strainer or the like and avoid excess water splash on them.



Instead of throwing the skins of vegetables and the like into the triangular sink-corner strainer, let them dry out before throwing them away.



Throw away used tea leaves and tea packs after allowing them to dry out.



Set the water strainer in the sink drain to a shallow level and clean it out frequently.



Set the triangular sink-corner strainer at an angle so that the water drains out well.